



# 2010-2011 SUPPLEMENTAL ANNUAL REPORT

1112 Reynolds Road  
Charlotte, MI 48813  
517-543-1630

[www.eatoncountyroad.com](http://www.eatoncountyroad.com)



*Eaton County*  
**Road  
Commission**



## **2010-2011 SUPPLEMENTAL ANNUAL REPORT**

---

**OCTOBER 1, 2010 - SEPTEMBER 30, 2011**

**DARRELL R. TENNIS, CHAIRMAN**

*Term expires 12-31-2013*

**DUANE A. ELDRED, VICE CHAIRMAN**

*Term expires 12-31-2011*

**LARRY L. ADAMS, MEMBER**

*Term expires 12-31-2012*

**TIMOTHY L. LAMOREAUX, MEMBER**

*Term expires 12-31-2016*

**BENJAMIN S. LYONS, MEMBER**

*Term expires 12-31-2014*

**BLAIR E. BALLOU, P.E., ENGINEER-MANAGER**

**LORI N. FRIEDLIS, CPA, FINANCE DIRECTOR**

# TABLE OF CONTENTS

---

Introduction	4
Organizational Chart	7
Financial Summary	8
Illustration of Revenues and Expenditures	9
Illustration of Overall Primary and Local Road and Bridge Expenditures	10
Illustration of Primary Road and Bridge Expenditures	11
Illustration of Local Road and Bridge Expenditures	12
Summary of 2010-2011 Road Improvement Projects	13
Tabulation by Township of 2010-2011 Road Improvement Projects	14
Primary Maintenance Cost Summary by Township	31
Local Maintenance Cost Summary by Township	32
Primary Maintenance and Construction Preliminary Project List for 2012	33
Ten Year History of MTF Revenue, Township Contributions and County Board Appropriations	34
Five Year Township Contributions by Dollar and Per Capita	35
Primary Road Fund Transfers to Local Road Fund 2002-2011	36
Ten Year History of Road Resurfacing	37
History of Annual Pothole Patching Costs	38
History of Annual Insurance Costs	39
Material Cost Trends	40
Summary of Permit Department Operations	41
Capital Outlay Detail	42
Status of Road Mileage at January 1, 2012	43

# INTRODUCTION

---

The Eaton County Road Commission was established in 1912 by resolution of the County Board of Supervisors and charged by law with the duty “to keep in reasonable repair, so that they shall be reasonably safe and convenient for public travel, all county roads, bridges, and culverts that are under their care and control, and which are open to public travel.” State law also requires the Road Commission to permit and regulate certain activities in road right-of-way, authorizes the Road Commission to set reasonable standards for adopting new roads into the county system and to enforce state restrictions on vehicle size and weight on county roads.

Over the past 100 years, the Eaton County road system has grown to include 390 miles that are now designated as Primary roads. Passage of the McNitt Act in 1931 abolished the old township road system and transferred over 650 miles of township roads to the Road



Commission. These old township roads, together with over 118 miles of subdivision streets built since that time, make up what is now the 781 mile system of County Local roads. Overall, 57%, or 672 miles, of all Eaton County roads are paved, with the remaining 500 miles being gravel surfaced but otherwise unimproved.

Routine maintenance by Road Commission workers is organized into four service areas. Crews working in the southeast and southwest areas of the County operate out

of the main garage in Charlotte. The northwest quarter of the County is served by the crew based in Vermontville, and the northeast area covered by workers from our garage in Delta Township.

While the Road Commission continues to use its own forces for emergency and minor repairs, and most of the routine maintenance of snow removal, gravel blading and seal coating, all construction and most other heavy maintenance work is performed by private contractors selected through competitive bids. Many other routine maintenance operations that require specialized equipment such as mowing, pavement markings and



street sweeping are also provided by private firms. The dollar amount contracted with private companies in fiscal year 2010-2011 equaled 25% of the total expenditures for road maintenance and construction.

On Primary roads in 2011 the Road Commission completed a project to reconstruct and widen Nixon Road from St. Joe Highway north one half mile including turn lanes on St. Joe Highway at the intersection. A combination of federal CMAQ and USTP grant funds were used to fund 80% of the cost of the project, with Delta Charter Township providing the 20% local matching funds.

By using \$775,065 in federal RSTP grant funds together with \$86,837 in state TEDF grant funds the Road Commission placed a new sealcoat surface on 63 miles of Primary roads across the county in 2011.

On local roads in 2011 in cooperation with township governments the Road Commission resurfaced 0.76 mile of paved local road using hot mix asphalt and 2.27 miles using sealcoat. An additional 7 miles of unimproved local roads were resurfaced

with gravel. The Road Commission also began a project in 2011 to resurface all the paved streets in the Windsor Glenn subdivision in Windsor Township in response to a citizen petition to create a special assessment district to fund most of the cost of the improvements. This project will be completed in the early summer of 2012.

While the Road Commission's first priority is public safety on all county roads, we continue to work towards keeping the existing good roads in Eaton County in good condition, rather than deferring needed maintenance in order to pay for the construction of new paved roads.

Recognizing the need for long range planning for improvements on the county road system, the Road Commission participates in the Tri-County Regional Planning Commission planning process, and actively competes for Federal and State grant funds and other local government funds for specific improvement projects whenever possible.

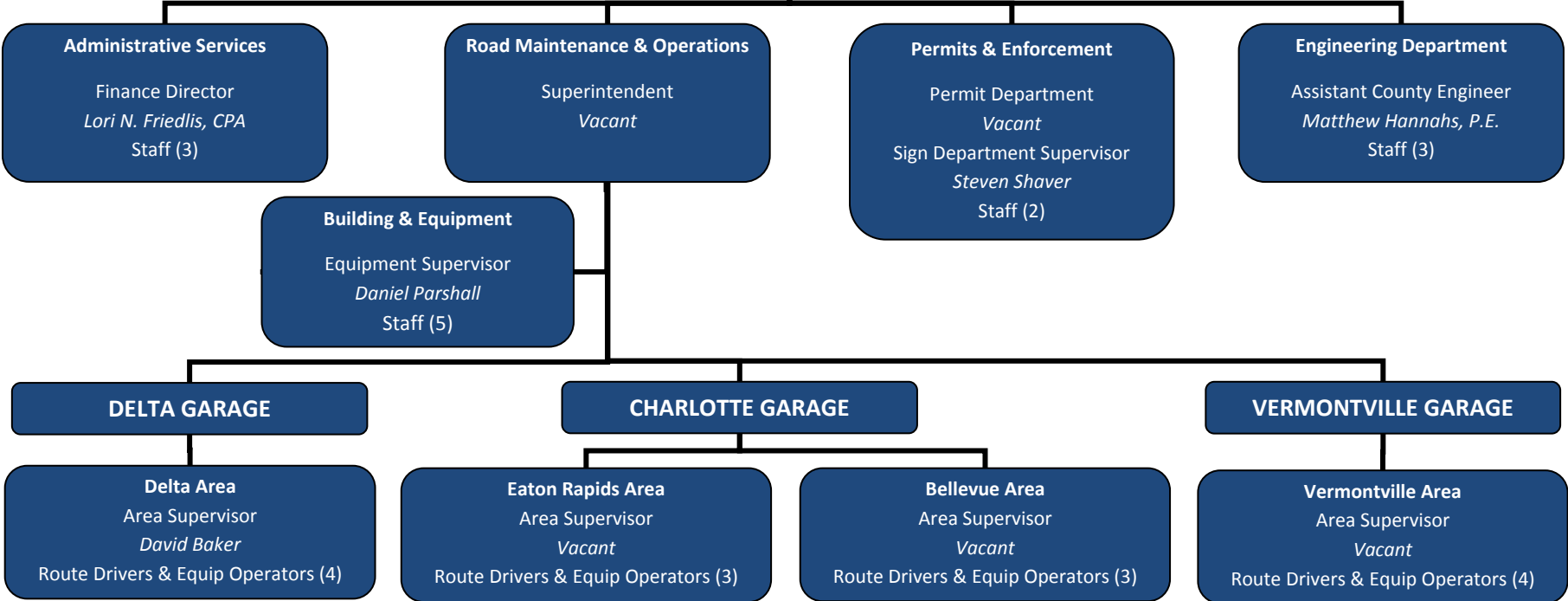
The Road Commission welcomes comments, suggestions and discussion on both programs and specific projects at any time.



**BOARD OF EATON COUNTY COMMISSIONERS**

**BOARD OF EATON COUNTY ROAD COMMISSIONERS**  
Darrell R. Tennis, Chairman  
Duane A. Eldred, Vice Chairman  
Larry L. Adams, Timothy J. Lamoreaux, Benjamin S. Lyons, Members

**Engineer-Manager**  
Blair E. Ballou, P.E.



**Serves:**  
Benton Township (Summer)  
Delta Charter Township  
Oneida Charter Township  
Windsor Charter Township

**Serves:**  
Benton Township (Winter)  
Brookfield Township  
Eaton Township  
Eaton Rapids Township  
Hamlin Township

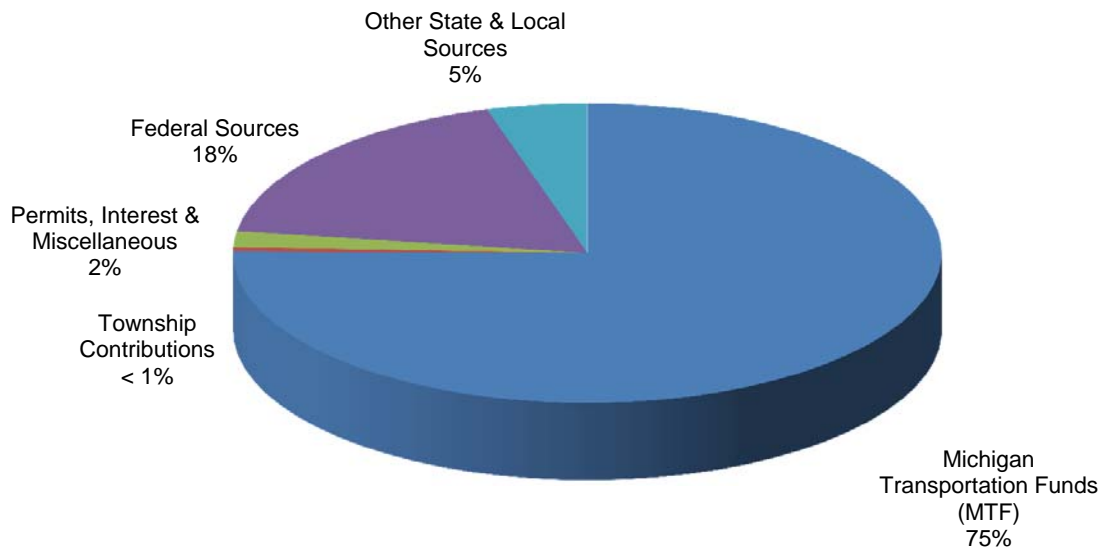
**Serves:**  
Bellevue Township  
Carmel Township  
Kalamo Township  
Walton Township

**Serves:**  
Chester Township  
Roxand Township  
Sunfield Township  
Vermontville Township

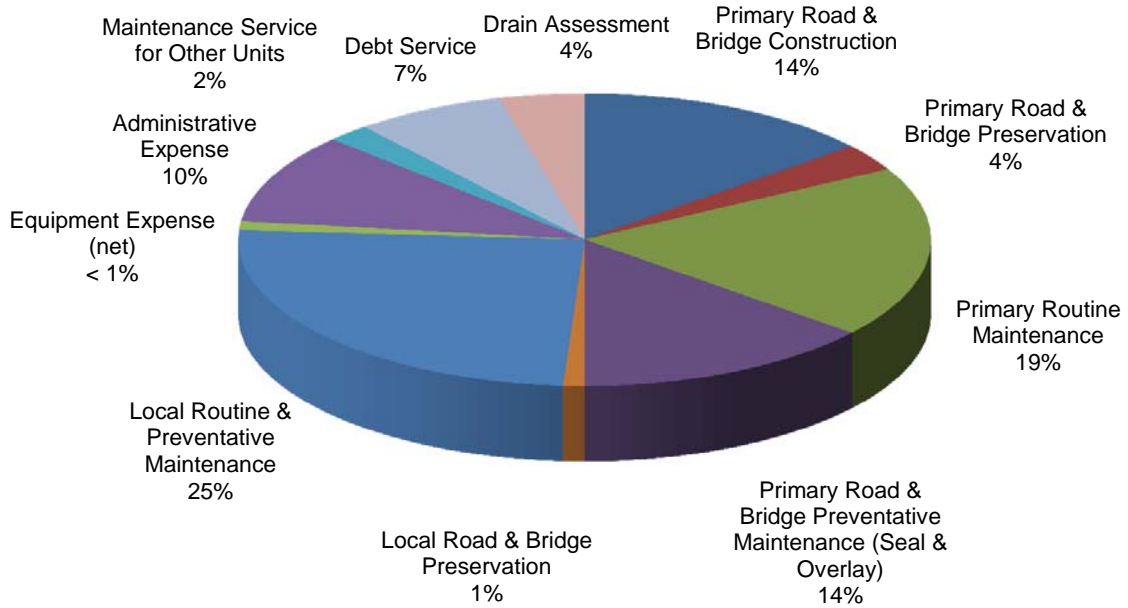
# FINANCIAL SUMMARY

	<b>2008-2009</b>	<b>2009-2010</b>	<b>2010-2011</b>	<b>2011-2012</b>
	<b>ACTUAL</b>	<b>ACTUAL</b>	<b>ACTUAL</b>	<b>BUDGET</b>
<b>REVENUES</b>				
Permit Revenue	\$ 73,347	\$ 54,985	\$ 62,100	\$ 65,000
Intergovernmental:				
Federal Sources	1,847,755	1,719,023	1,800,509	5,448,000
Michigan Transportation Funds	7,128,770	7,448,713	7,475,999	7,282,613
Other State Sources	124,419	1,598,131	77,382	-
Township Contributions	737,984	697,087	42,128	1,176,673
Other Local Sources	79,048	36,912	378,851	10,650
Charges for Services	-	-	-	-
Interest and Rentals	1,141	187	334	300
Other Revenue	172,501	186,975	107,067	141,000
<b>Total Revenues</b>	<b>\$ 10,164,965</b>	<b>\$ 11,742,013</b>	<b>\$ 9,944,370</b>	<b>\$ 14,124,236</b>
<b>EXPENDITURES</b>				
Primary Roads:				
Construction/Capacity Improvements	\$ 808,133	\$ 653,051	\$ 1,169,844	\$ 3,712,000
Preservation/Structural Improvements	1,559,489	3,197,949	313,265	1,268,650
Routine Maintenance	2,199,747	1,702,607	1,599,460	2,672,000
Preventative Maintenance	-	1,570,348	1,195,113	1,134,000
Local Roads:				
Construction/Capacity Improvements	-	-	-	-
Preservation/Structural Improvements	677,240	53,331	109,397	1,836,192
Routine Maintenance	3,128,421	1,865,643	2,041,312	2,130,000
Preventative Maintenance	201,089	5,825	107,969	-
Equipment Expense (net)	319,963	194,497	64,180	75,000
Administration (net)	889,012	877,263	919,143	900,000
Maintenance Service for Other Units	321,323	260,323	193,139	200,000
Capital Outlay (net)	(266,400)	(235,866)	(211,060)	532,500
Debt Service	673,538	660,013	644,900	628,650
Drain Assessment	290,401	-	344,378	700,000
<b>Total Expenditures</b>	<b>\$ 10,801,956</b>	<b>\$ 10,804,984</b>	<b>\$ 8,491,040</b>	<b>\$ 15,788,992</b>
Net Revenues (Expenditures)	(636,991)	937,029	1,453,330	(1,664,756)
Fund Balance at Beginning of Year	2,534,425	1,897,434	2,834,463	4,287,793
<b>Fund Balance at End of Year</b>	<b>\$ 1,897,434</b>	<b>\$ 2,834,463</b>	<b>\$ 4,287,793</b>	<b>\$ 2,623,037</b>

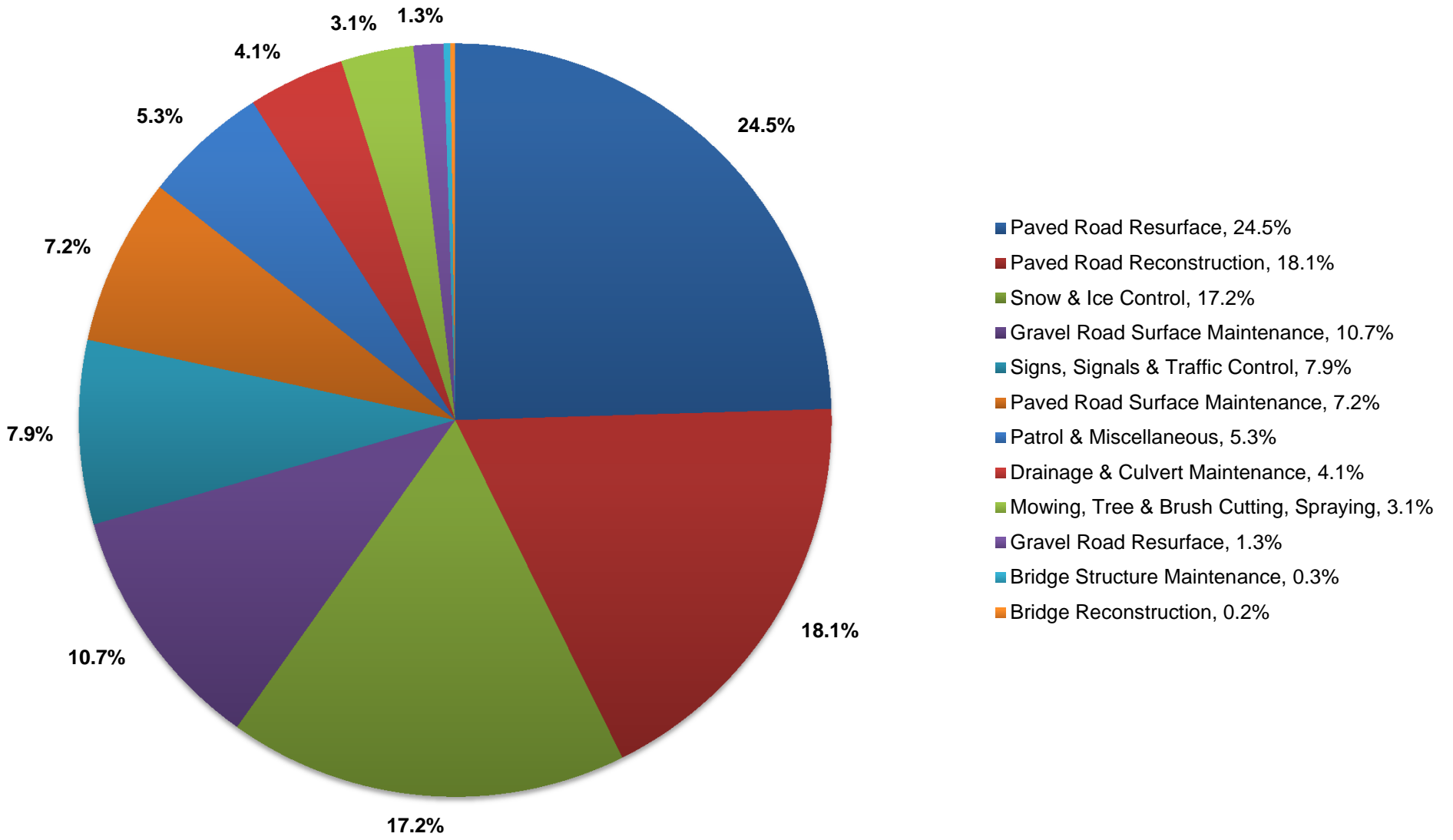
## REVENUE



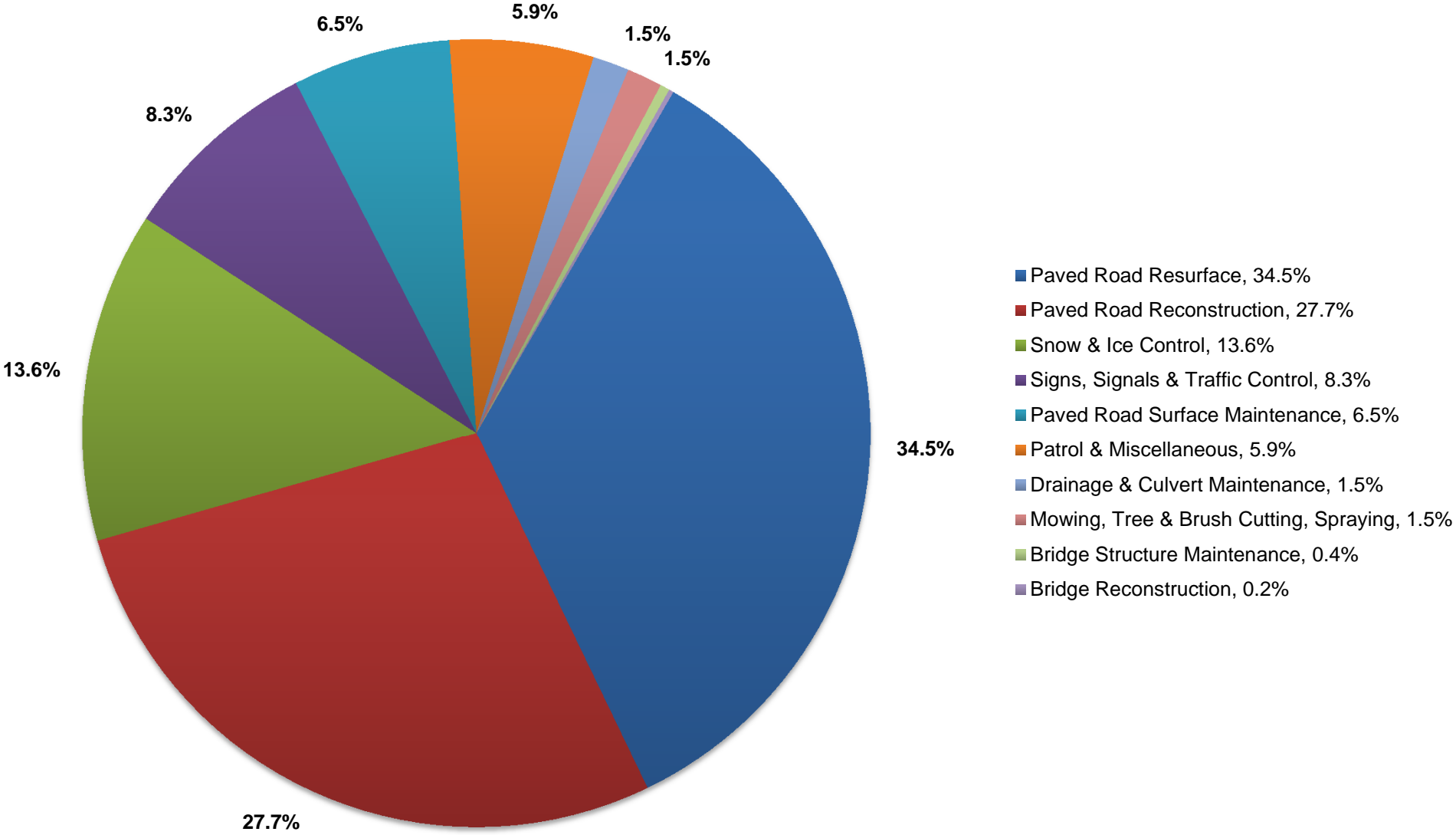
## EXPENDITURES



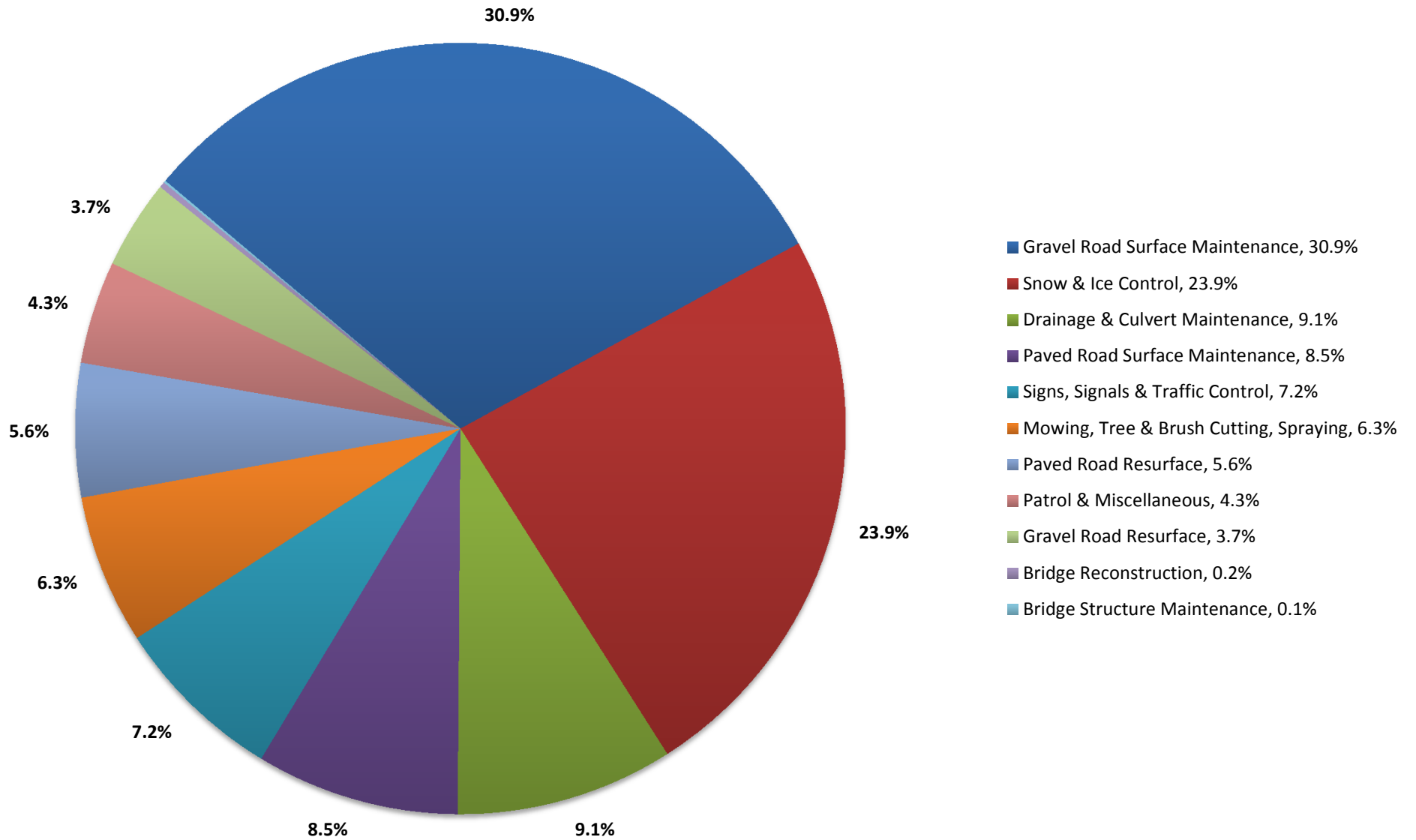
# OVERALL PRIMARY AND LOCAL ROAD AND BRIDGE EXPENDITURES



# PRIMARY ROAD AND BRIDGE EXPENDITURES



# LOCAL ROAD AND BRIDGE EXPENDITURES



# 2010-2011

## PRIMARY AND LOCAL ROAD IMPROVEMENTS

---

### SUMMARY

#### Primary Roads:

Total Construction/Capacity Improvement Projects	\$ 1,204,333
Total Preservation/Structural Improvement Projects	\$ 411,457
Total Preventative Maintenance Projects	<u>\$ 1,195,113</u>
<b>Total Primary Road and Bridge Projects</b>	<b><u>\$ 2,810,903</u></b>

#### Local Roads:

Total Construction/Capacity Improvement Projects	\$ -
Total Preservation/Structural Improvement Projects	\$ 109,397
Total Preventative Maintenance Projects	<u>\$ 107,969</u>
<b>Total Local Road and Bridge Projects</b>	<b><u>\$ 217,366</u></b>

**Grand Total** **\$ 3,028,269**

# 2010-2011 PRIMARY AND LOCAL ROAD IMPROVEMENTS

---

## BELLEVUE TOWNSHIP

Primary Roads:

Local Roads:

**Bellevue Township Total** \$ -

**Bellevue Township Contributions** \$ -

# 2010-2011 PRIMARY AND LOCAL ROAD IMPROVEMENTS

---

## BENTON TOWNSHIP

### Primary Roads:

Billwood Hwy, M-100 to Royston <i>2010 Crush, Shape and Resurface</i>	1.00 mi	\$	339
Cochran Rd, Pinch to Santee <i>2011 Sealcoat</i>	1.00 mi	\$	19,443
Cochran Road, Santee to Needmore <i>2011 Single Seal</i>	0.94 mi	\$	16,865
Vermontville Hwy, Cochran to Benton <i>2011 Single Seal</i>	0.97 mi	\$	21,526
Vermontville Hwy, urban boundary to Royston <i>2011 Single Seal</i>	0.50 mi	\$	11,514

### Local Roads:

<b>Benton Township Total</b>		\$	69,687
<b>Benton Township Contributions</b>		\$	-

# 2010-2011 PRIMARY AND LOCAL ROAD IMPROVEMENTS

---

## BROOKFIELD TOWNSHIP

Primary Roads:

Local Roads:

**Brookfield Township Total** \$ -

**Brookfield Township Contributions** \$ -

# 2010-2011 PRIMARY AND LOCAL ROAD IMPROVEMENTS

---

## CARMEL TOWNSHIP

### Primary Roads:

Ainger Rd, Five Point to Kalamo <i>2011 Single Seal</i>	2.00 mi	\$	30,858
Kalamo Hwy, Ainger to Lacey Lake <i>2011 Single Seal</i>	1.50 mi	\$	23,143

### Local Roads:

<b>Carmel Township Total</b>		\$	54,001
<b>Carmel Township Contributions</b>		\$	13,824

# 2010-2011 PRIMARY AND LOCAL ROAD IMPROVEMENTS

---

## CHESTER TOWNSHIP

### Primary Roads:

Vermontville Hwy, Bradley to Ainger <i>2011 Single Seal</i>	1.11 mi	\$	24,399
Vermontville Hwy, Mulliken to Cochran <i>2011 Single Seal</i>	3.02 mi	\$	67,020

### Local Roads:

Gresham Hwy, W Township Line to Mulliken <i>2010 Regravel</i>	3.17 mi	\$	23,447
Moyer Rd, Santee to Needmore <i>2010 Regravel</i>	0.94 mi	\$	15,790

**Chester Township Total** \$ 130,656

**Chester Township Contributions** \$ 8,111

# 2010-2011 PRIMARY AND LOCAL ROAD IMPROVEMENTS

---

## DELTA TOWNSHIP



### Primary Roads:

Delta Center Elementary SRTS, St. Joe, Canal and Williamsburg - Non-Motorized <i>2010 Safe Routes to Schools</i>		\$	37,647
Creyts Rd, I-496 to Saginaw <i>2010 ARRA Asphalt Mill &amp; Overlay</i>	1.47 mi	\$	8,732
Creyts Rd, M-43 to Old River Trail <i>2009 Non-Motorized Path</i>		\$	345,562
Michigan Ave, Canal to Creyts <i>2012 New Location</i>	1.01 mi	\$	122,337
Nixon Rd, St. Joe to the North <i>2010 Reconstruct</i>	0.50 mi	\$	657,524
St. Joe Hwy, Broadbent to Marketplace <i>2011 Add turn lanes, bicycle lanes, sidewalk &amp; signalize intersection</i>	0.41 mi	\$	25,649
St. Joe Hwy, at Nixon <i>2010 Widen Intersection</i>	0.23 mi	\$	415,190

### Local Roads:

Countryside Dr, St. Joe to Denmark <i>2011 Asphalt Overlay</i>	0.45 mi	\$	28
Madrid Dr, Canal to Taragreen <i>2011 Asphalt Overlay</i>	0.23 mi	\$	4,840
Sangria Ln, Madrid to end <i>2011 Asphalt Overlay</i>	0.08 mi	\$	1,402

# 2010-2011

## PRIMARY AND LOCAL ROAD IMPROVEMENTS

---

### DELTA TOWNSHIP CONTINUED

Taragreen Dr, Sangria to end <i>2011 Asphalt Overlay</i>	0.18 mi	\$	1,402
Trenton/Pembrook Pl, Benington to Arlington <i>2011 Asphalt Overlay</i>	0.20 mi	\$	28
Westhaven Blvd, St. Joe to Westvale <i>2011 Asphalt Overlay</i>	0.25 mi	\$	28
Wolf Run Dr, Springtree to Windsong <i>2011 Asphalt Overlay</i>	0.15 mi	\$	28
<b>Delta Township Total</b>		\$	1,620,397
<b>Delta Township Contributions</b>		\$	45,567

# 2010-2011 PRIMARY AND LOCAL ROAD IMPROVEMENTS

---

## EATON TOWNSHIP



### Primary Roads:

Five Point Hwy, Narrow Lake to Royston <i>2010 ARRA Seal</i>	3.02 mi	\$	376
Five Point Hwy, Cochran to Narrow Lake <i>2011 Single Seal</i>	3.00 mi	\$	51,823
Island Hwy, Charlotte CL to Casler <i>2011 Single Seal</i>	2.00 mi	\$	52,381
Island Hwy, .25 mi E of Casler to Royston <i>2011 Single Seal</i>	3.03 mi	\$	70,668
Narrow Lake Rd, Five Point to Brookfield <i>2011 Single Seal</i>	2.40 mi	\$	41,459

### Local Roads:

Kalamo Hwy Bridge, between Brookfield and Tubbs <i>2012 Replace</i>		\$	4,806
Long Hwy, Perkey to Ackley <i>2011 Skin, Patch &amp; Seal</i>	1.26 mi	\$	86,522
Stewart Rd, Long to M-50 <i>2011 Sealcoat</i>	1.01 mi	\$	20,460
Perkey Rd, Mills to Five Point <i>2010 Regravel</i>	1.01 mi	\$	14,703
<b>Eaton Township Total</b>		\$	<b>343,198</b>
<b>Eaton Township Contributions</b>		\$	<b>15,960</b>

# 2010-2011 PRIMARY AND LOCAL ROAD IMPROVEMENTS

---

## EATON RAPIDS TOWNSHIP

### Primary Roads:

Island Hwy, Smith Rd & Columbia Hwy, Canal to Waverly <i>2011 Sealcoat</i>	4.00 mi	\$	86,674
Island Hwy, Royston to Canfield <i>2011 Sealcoat</i>	0.98 mi	\$	22,856
Royston Rd, M-50 to Five Point <i>2011 Sealcoat</i>	1.59 mi	\$	29,738

### Local Roads:

Canfield Rd, M-50 to Long <i>2010 Regravel</i>	0.87 mi	\$	13,793
---	---------	----	--------

**Eaton Rapids Township Total** \$ 153,061

**Eaton Rapids Township Contributions** \$ 27,780

# 2010-2011 PRIMARY AND LOCAL ROAD IMPROVEMENTS

---

## HAMLIN TOWNSHIP

### Primary Roads:

Royston Rd, Five Point to Bellevue <i>2011 Single Seal</i>	3.85 mi	\$	72,007
---	---------	----	--------

### Local Roads:

<b>Hamlin Township Total</b>		\$	72,007
------------------------------	--	----	--------

<b>Hamlin Township Contributions</b>		\$	-
--------------------------------------	--	----	---

# 2010-2011 PRIMARY AND LOCAL ROAD IMPROVEMENTS

---

## KALAMO TOWNSHIP

### Primary Roads:

Five Point Hwy, Curtis to Lacey <i>2011 Single Seal</i>	5.00 mi	\$	93,719
Kalamo Hwy, Curtis to Pease <i>2011 Single Seal</i>	2.00 mi	\$	46,978
Kalamo Hwy, Lacey Lake to Bradley <i>2011 Single Seal</i>	0.52 mi	\$	9,269
Kalamo Hwy, Pease to Shaytown <i>2010 STP Seal</i>	3.02 mi	\$	504

### Local Roads:

<b>Kalamo Township Total</b>		\$	150,470
<b>Kalamo Township Contributions</b>		\$	-



# 2010-2011 PRIMARY AND LOCAL ROAD IMPROVEMENTS

---

## ROXAND TOWNSHIP

### Primary Roads:

Mulliken Rd, Needmore to M-43 <i>2011 Single Seal</i>	5.00 mi	\$	86,667
Needmore Hwy, Mulliken to Cochran <i>2010 ARRA Seal</i>	3.03 mi	\$	376

### Local Roads:

<b>Roxand Township Total</b>		\$	87,043
<b>Roxand Township Contributions</b>		\$	-

# 2010-2011 PRIMARY AND LOCAL ROAD IMPROVEMENTS

---

## SUNFIELD TOWNSHIP



### Primary Roads:

Ionia Rd, Kelly to Mt. Hope <i>2011 Single Seal</i>	2.04 mi	\$	34,437
Kelly Hwy, at Dooling Drain between Irish & Ionia <i>2011 Culvert Replacement</i>		\$	9,434

### Local Roads:

<b>Sunfield Township Total</b>		\$	43,871
<b>Sunfield Township Contributions</b>		\$	10,204

# 2010-2011 PRIMARY AND LOCAL ROAD IMPROVEMENTS

---

## VERMONTVILLE TOWNSHIP

### Primary Roads:

Ionia Rd, Lake to Kelly <i>2011 Single Seal</i>	1.00 mi	\$	16,882
Ionia Rd, Vermontville VL to Lake <i>2011 Single Seal</i>	2.50 mi	\$	39,946
Vermontville Hwy, Vermontville to Bradley <i>2011 Single Seal</i>	3.03 mi	\$	66,604

### Local Roads:

<b>Vermontville Township Total</b>		\$	123,432
<b>Vermontville Township Contributions</b>		\$	-

# 2010-2011 PRIMARY AND LOCAL ROAD IMPROVEMENTS

---

## WALTON TOWNSHIP

### Primary Roads:

Butterfield & Marshall Rd, I-69 to Marshall to county line <i>2011 Sealcoat</i>	2.00 mi	\$	52,579
---	---------	----	--------

### Local Roads:

Nye Hwy, Marshall to Matthews <i>2010 Regravel</i>	1.00 mi	\$	16,494
---	---------	----	--------

<b>Walton Township Total</b>		\$	69,073
------------------------------	--	----	--------

<b>Walton Township Contributions</b>		\$	22,080
--------------------------------------	--	----	--------

# 2010-2011 PRIMARY AND LOCAL ROAD IMPROVEMENTS

---

## WINDSOR TOWNSHIP



### Primary Roads:

Billwood Hwy, Royston to Canal <i>2010 Crush, Shape and Resurface</i>	2.90 mi	\$	2,444
Canal Rd, Lansing N to end of Blvd <i>2010 Asphalt Mill &amp; Resurface</i>	0.57 mi	\$	227
Guinea Rd, Billwood to Davis <i>2010 Asphalt Overlay</i>	0.97 mi	\$	142
Vermontville Hwy, Royston to Canal <i>2011 Single Seal</i>	2.96 mi	\$	68,161

### Local Roads:

Windsor Glen Special Assessment District <i>2011 S.A.D.</i>	1.18 mi	\$	11,956
--	---------	----	--------

**Windsor Township Total** \$ 82,930

**Windsor Township Contributions** \$ 9,000

# 2010-2011 PRIMARY ROUTINE MAINTENANCE

---

## SUMMARY BY TOWNSHIP

<u>TOWNSHIP</u>	<u>ROAD COMMISSION COST</u>	<u>MILES</u>	<u>AVERAGE COST PER MILE</u>
Bellevue	\$ 69,449	18.40	\$ 3,774
Benton	92,625	28.13	3,293
Brookfield	55,033	18.41	2,989
Carmel	80,122	23.36	3,430
Chester	49,438	13.70	3,609
Delta	390,977	54.84	7,129
Eaton	103,402	25.99	3,979
Eaton Rapids	82,718	24.09	3,434
Hamlin	83,723	26.47	3,163
Kalamo	76,910	18.30	4,203
Oneida	71,946	23.51	3,060
Roxand	79,876	20.72	3,855
Sunfield	89,281	22.80	3,916
Vermontville	62,838	17.51	3,589
Walton	79,484	23.00	3,456
Windsor	131,638	31.54	4,174
Total Primary Maintenance	<u>\$ 1,599,460</u>	<u>390.77</u>	<u>\$ 4,093</u>

# 2010-2011 LOCAL ROUTINE MAINTENANCE

---

## SUMMARY BY TOWNSHIP

<u>TOWNSHIP</u>	<u>ROAD COMMISSION COST</u>	<u>MILES</u>	<u>AVERAGE COST PER MILE</u>
Bellevue	\$ 107,336	48.67	\$ 2,205
Benton	108,394	33.62	3,224
Brookfield	120,172	54.02	2,225
Carmel	102,807	42.25	2,433
Chester	128,326	48.62	2,639
Delta	272,044	110.87	2,454
Eaton	100,624	42.17	2,386
Eaton Rapids	133,222	43.29	3,077
Hamlin	120,808	44.82	2,695
Kalamo	111,323	47.62	2,338
Oneida	115,501	40.40	2,859
Roxand	130,818	44.59	2,934
Sunfield	112,558	37.41	3,009
Vermontville	138,192	42.13	3,280
Walton	97,564	47.71	2,045
Windsor	141,622	53.05	2,670
Total Local Maintenance	<u>\$ 2,041,311</u>	<u>781.24</u>	<u>\$ 2,613</u>

# 2011-2012 PRIMARY MAINTENANCE AND CONSTRUCTION PROJECTS

---

## PRELIMINARY LISTING AS OF 2-9-12

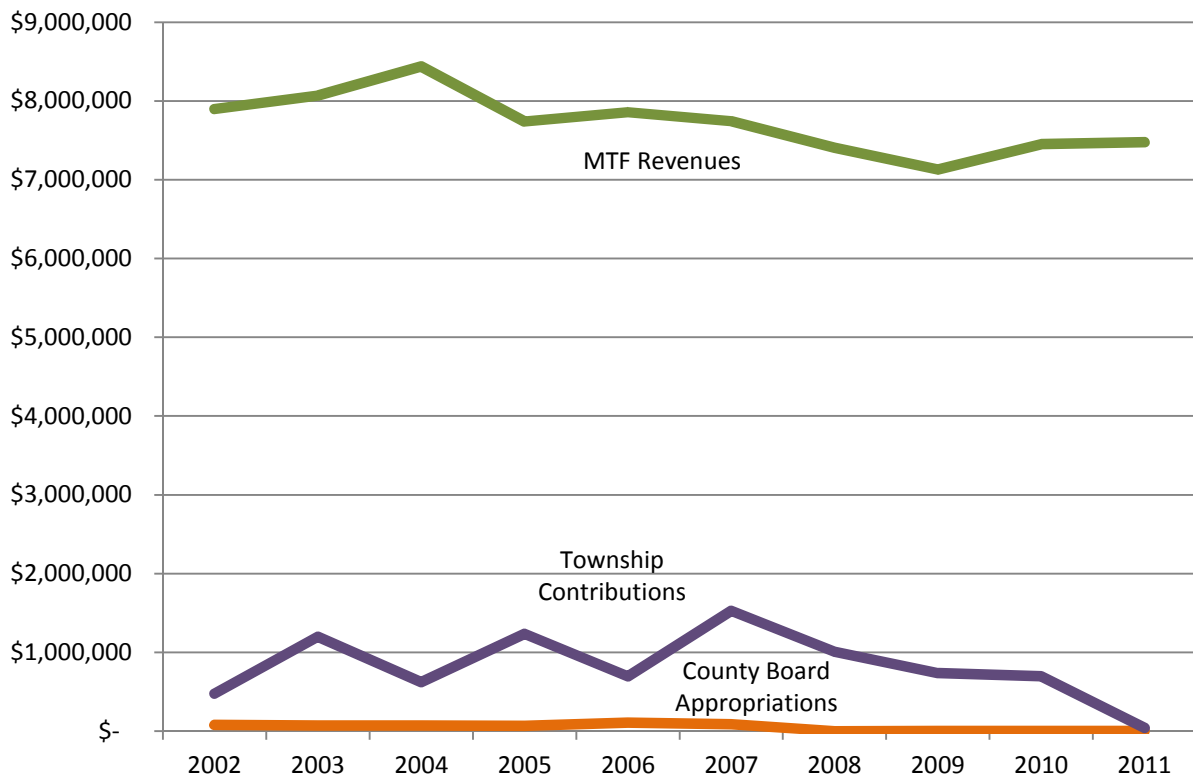
<u>TOWNSHIP</u>	<u>ROAD NAME</u>	<u>FROM</u>	<u>TO</u>	<u>LENGTH</u>	<u>PROPOSED WORK</u>
Bellevue	Lacey Lake	Battle Creek	Five Point	3.45	Single Seal
Benton	Otto	Vermontville	Doane	3.51	Single Seal
Carmel	Kalamo	Ainger	Battle Creek	3.07	Single Seal
Chester	Mulliken	M-50	Needmore	2.43	Single Seal
Delta	Michigan	Canal	Creyts	1.01	New Construct
Delta	St. Joe	Broadbent	Marketplace	0.50	Reconstruct
Delta	St. Joe	Creyts	Waverly	2.01	Slurry Seal
Eaton Rapids	Royston	M-50	Island	2.44	Single Seal
Kalamo	Kalamo	Pease	Swift	2.52	Single Seal
Roxand	Dow	M-50	Grace	4.02	Single Seal
Roxand	Needmore	Mulliken	Cochran	3.03	Single Seal
Sunfield	Dow	Grace	M-43	0.67	Single Seal
Sunfield	Kelly	Hager	Brown	4.12	Single Seal



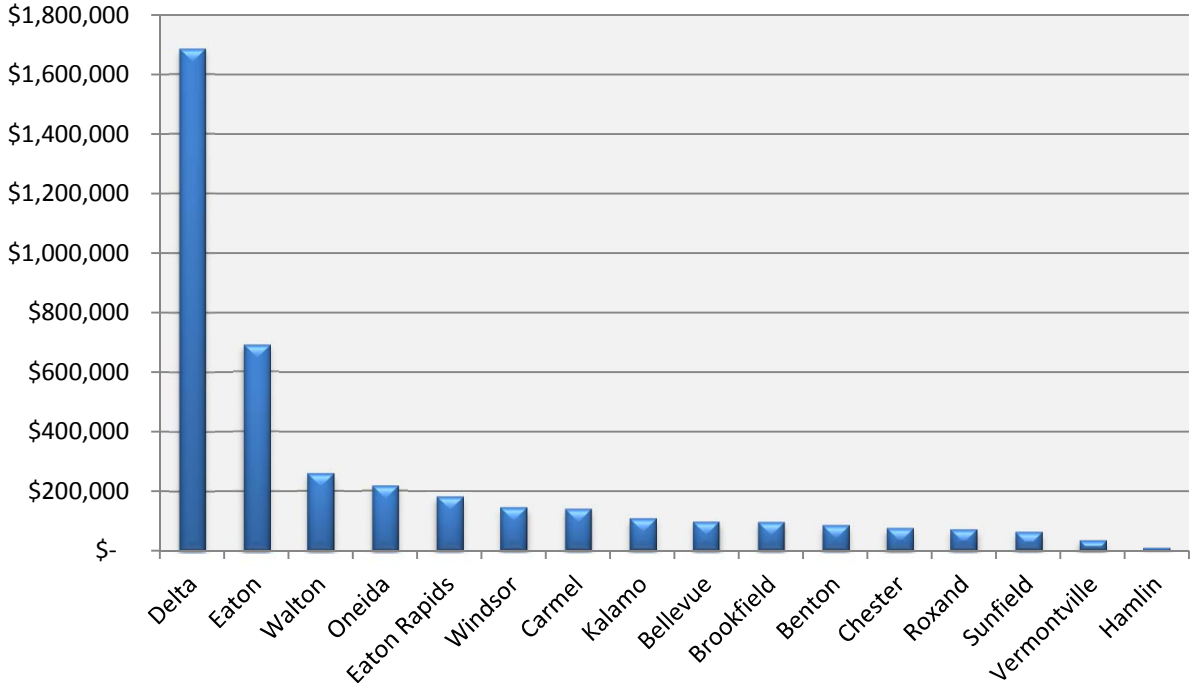
29.26	Single Seal
0.50	Reconstruct
1.01	New Construct
2.01	Slurry Seal
<u>32.78</u>	

# TEN YEAR HISTORY MTF REVENUE, TOWNSHIP CONTRIBUTIONS AND COUNTY BOARD APPROPRIATIONS

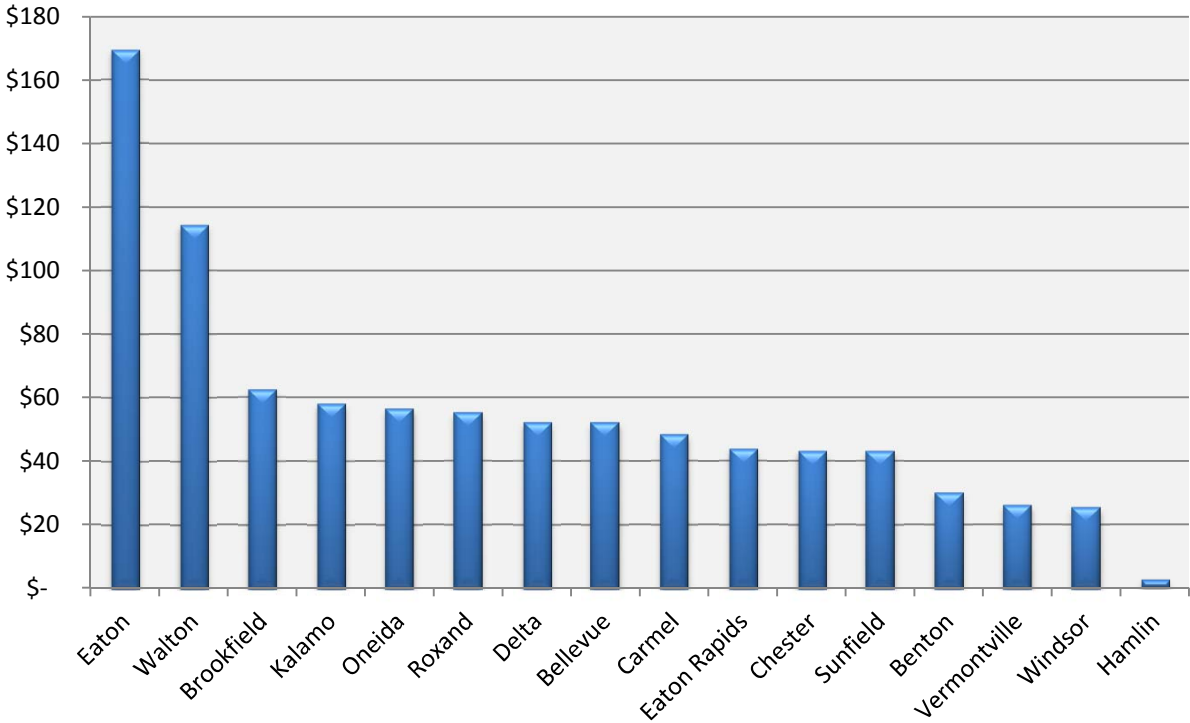
<u>YEAR</u>	<u>EATON COUNTY SHARE OF MTF</u>	<u>COUNTY BOARD APPROPRIATIONS</u>	<u>TOWNSHIP CONTRIBUTIONS</u>	<u>TOWNSHIP CONTRIBUTIONS AS % OF MTF</u>
2002	\$ 7,896,461	\$ 76,111	\$ 477,762	6.1%
2003	8,069,275	68,275	1,200,840	14.9%
2004	8,435,997	69,850	623,287	7.4%
2005	7,740,851	64,792	1,234,861	16.0%
2006	7,858,406	107,344	696,861	8.9%
2007	7,742,677	85,957	1,528,846	19.7%
2008	7,406,648	-	1,006,718	13.6%
2009	7,128,770	-	737,984	10.4%
2010	7,448,713	-	697,087	9.4%
2011	7,475,999	-	42,128	0.6%



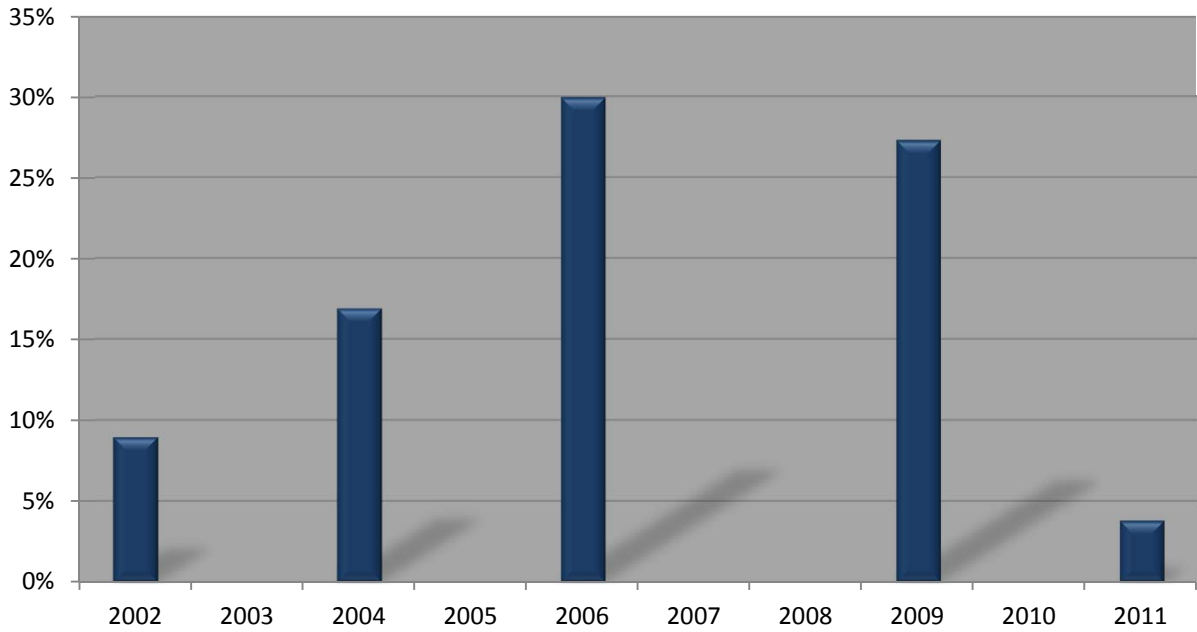
### Five Year Township Contributions by Dollar



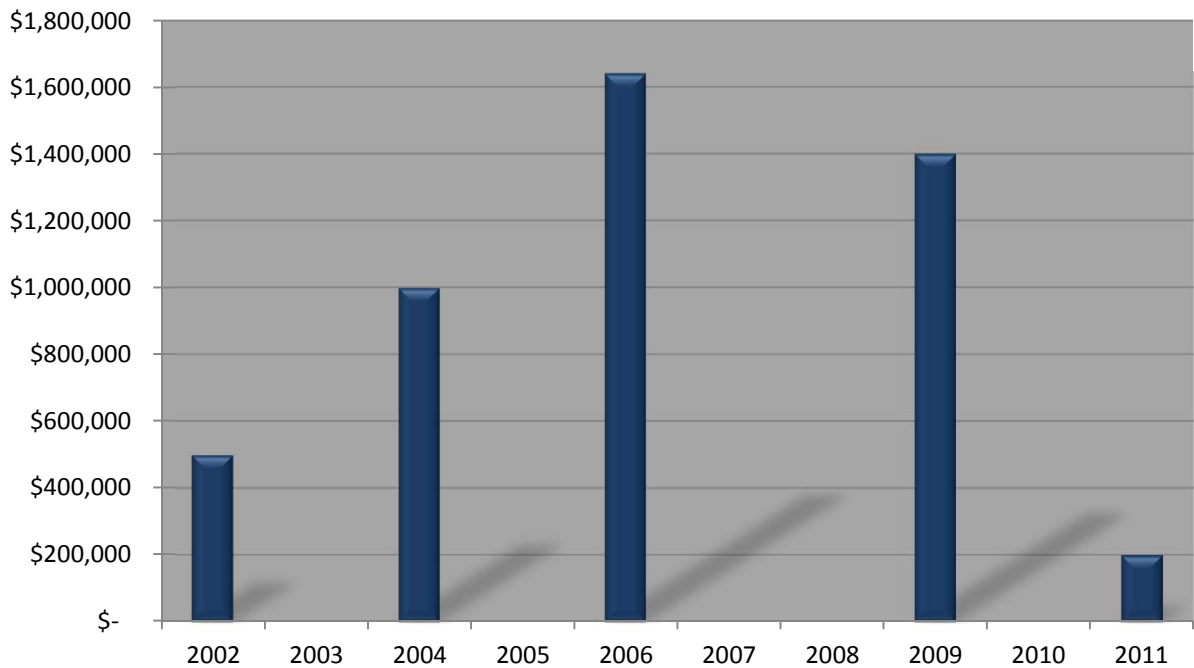
### Five Year Township Contributions Per Capita



**TRANSFERS FROM PRIMARY ROAD FUND TO LOCAL ROAD FUND  
AS A PERCENT OF TOTAL PRIMARY MTF DISTRIBUTIONS  
2002-2011**

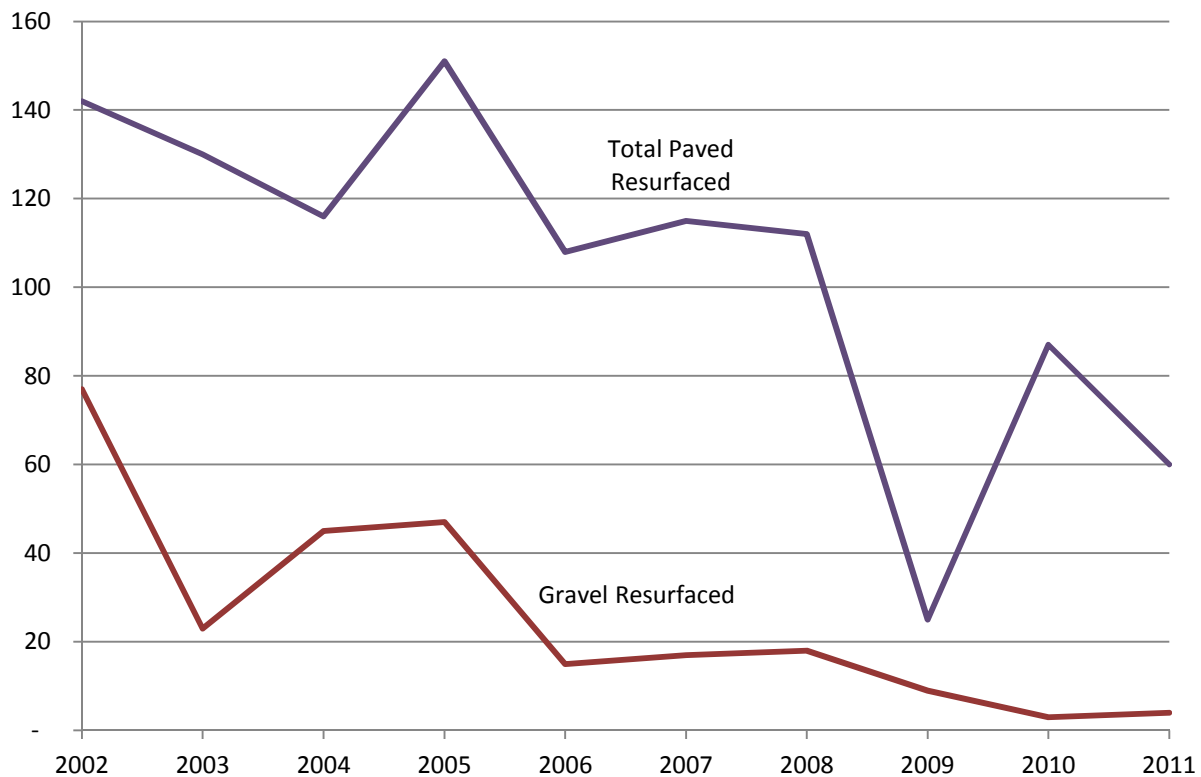


**DOLLAR TRANSFERS FROM PRIMARY ROAD FUND TO LOCAL  
ROAD FUND  
2002-2011**



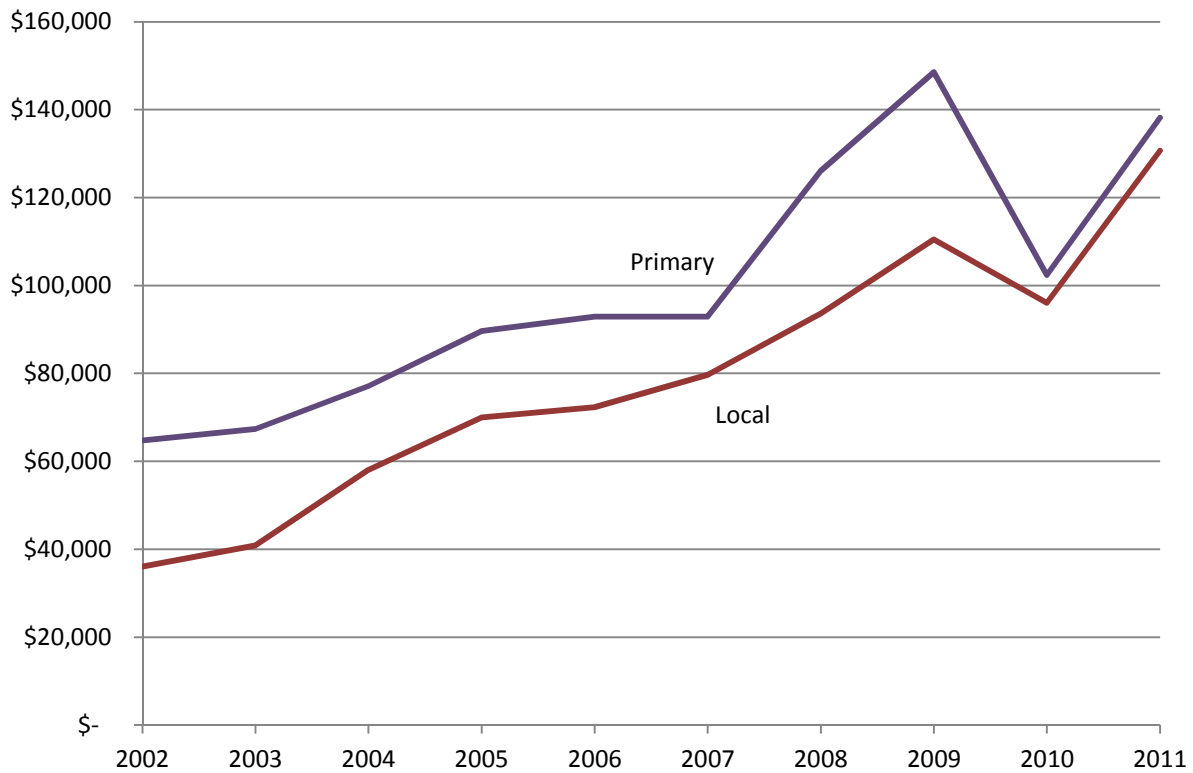
# TEN YEAR HISTORY ROAD RESURFACING

<u>YEAR</u>	<u>PRIMARY PAVED RESURFACED</u>	<u>LOCAL PAVED RESURFACED</u>	<u>TOTAL RESURFACED</u>	<u>LOCAL GRAVELLED</u>
2002	103	39	142	77
2003	96	34	130	23
2004	84	32	116	45
2005	106	45	151	47
2006	65	43	108	15
2007	86	29	115	17
2008	97	15	112	18
2009	2	23	25	9
2010	87	-	87	3
2011	56	4	60	4



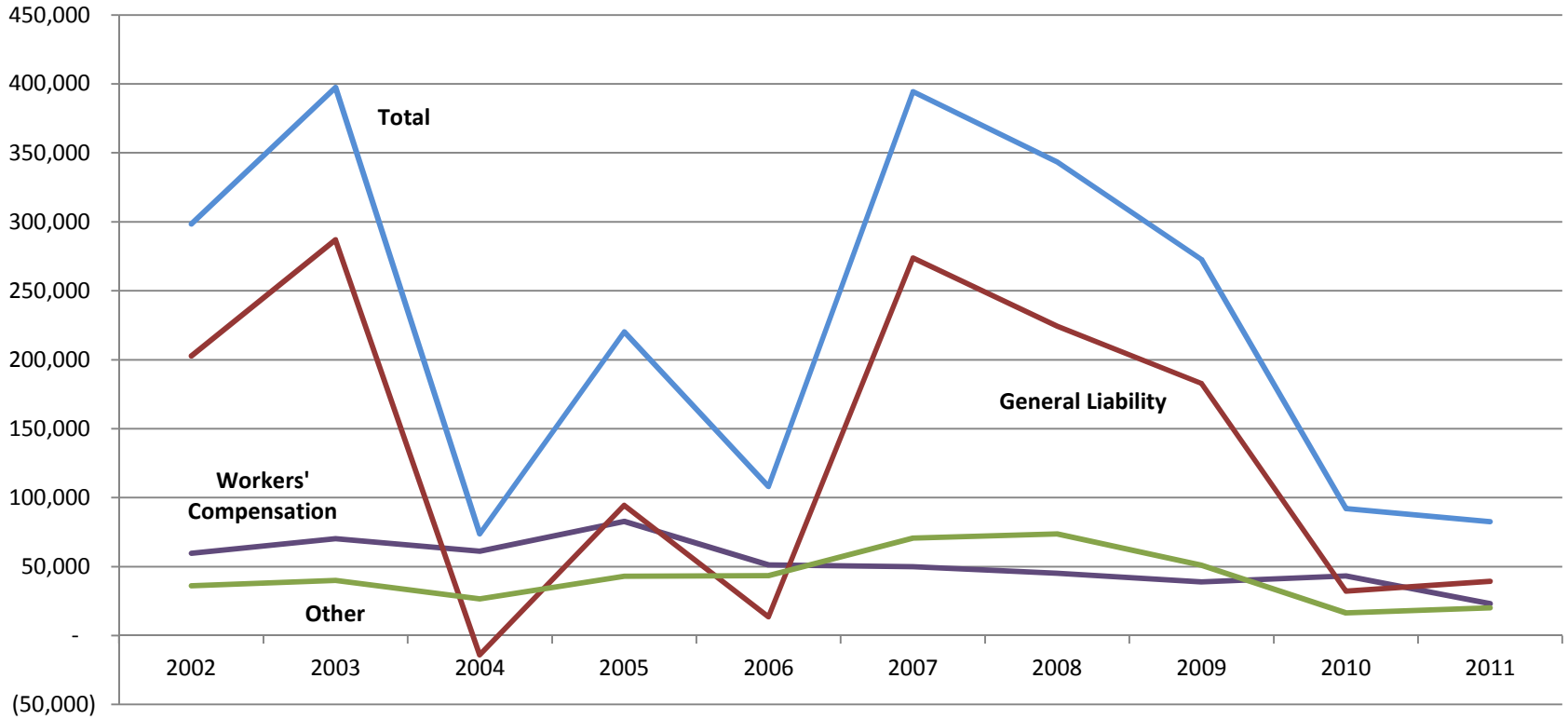
# ANNUAL POTHOLE PATCHING COSTS

YEAR	PRIMARY TONS	LOCAL TONS	TOTAL TONS	PRIMARY COST	LOCAL COST	TOTAL COST	AVG COST/MILE OF PRIMARY	AVG COST/MILE OF LOCAL	AVG COST/TON OF COLD PATCH
2002	196	73	269	\$ 64,741	\$ 36,077	\$ 100,818	\$ 169	\$ 131	\$ 375
2003	208	111	319	67,330	40,844	108,174	176	149	339
2004	205	157	362	77,144	58,005	135,149	202	211	373
2005	260	213	473	89,604	69,948	159,552	235	254	337
2006	265	147	412	92,932	72,276	165,208	243	263	401
2007	380	179	559	92,925	79,671	172,596	243	290	309
2008	269	206	475	126,126	93,649	219,775	330	341	463
2009	304	226	530	148,508	110,430	258,938	389	402	489
2010	168	182	350	102,375	96,049	198,424	262	349	567
2011	217	270	487	138,209	130,727	268,936	354	465	552



# ANNUAL INSURANCE COSTS

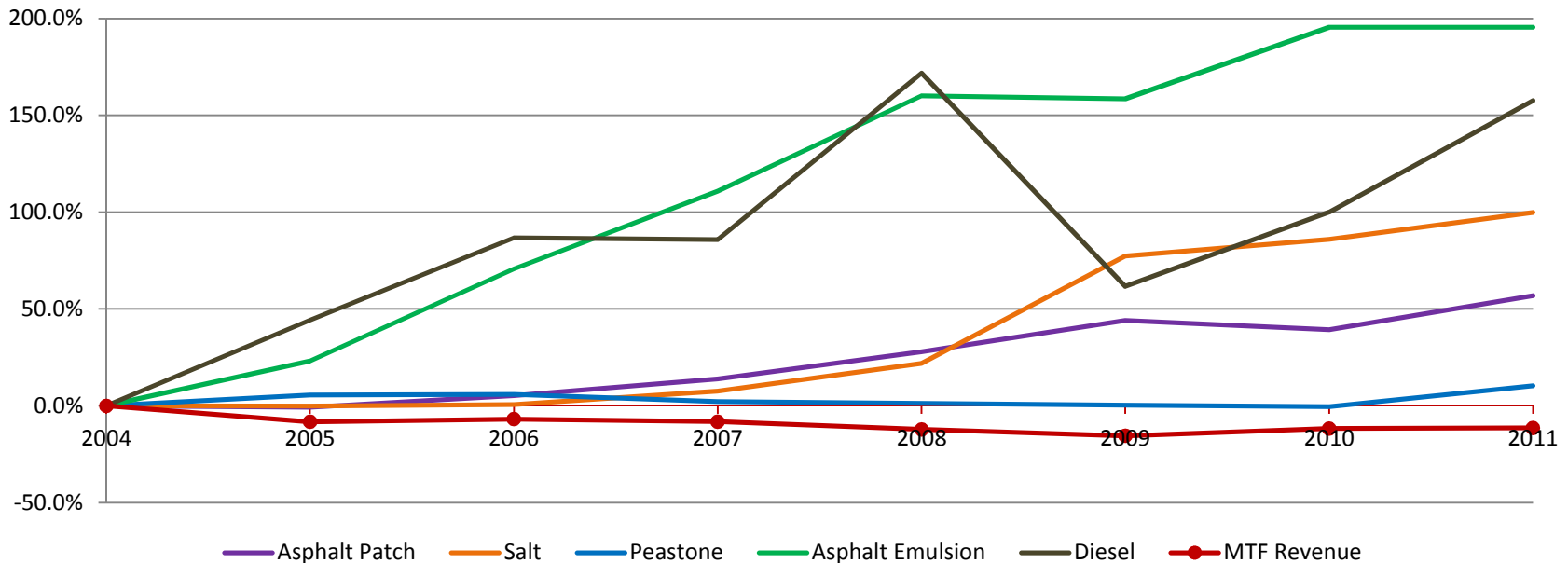
YEAR	2002	2003	2004	2005	2006	2007	2008	2009	2010	2011
Workers' Compensation	59,722	70,272	61,139	82,677	51,154	50,000	45,145	38,937	43,319	23,124
General Liability	202,609	286,948	(14,014)	94,463	13,552	273,832	224,354	182,841	32,247	39,346
Other	36,199	40,094	26,540	43,107	43,457	70,595	73,770	51,018	16,496	20,093
<b>Total</b>	<b>298,530</b>	<b>397,314</b>	<b>73,665</b>	<b>220,247</b>	<b>108,163</b>	<b>394,427</b>	<b>343,269</b>	<b>272,796</b>	<b>92,062</b>	<b>82,563</b>



# MATERIAL COST TRENDS

## BASE YEAR: 2004

	ASPHALT PATCH		SALT		PEASTONE		ASPHALT EMULSION		DIESEL		MTF REVENUE	
	\$/TON	% CHANGE	\$/TON	% CHANGE	\$/TON	% CHANGE	\$/GAL	% CHANGE	\$/GAL	% CHANGE	\$	% CHANGE
2004	57.29	0.0%	27.23	0.0%	8.18	0.0%	0.65	0.0%	1.20	0.0%	8,435,997	0.0%
2005	56.89	-0.7%	27.20	-0.1%	8.63	5.5%	0.80	23.1%	1.73	44.2%	7,740,851	-8.2%
2006	60.32	5.3%	27.39	0.6%	8.66	5.9%	1.11	70.8%	2.24	86.7%	7,858,406	-6.8%
2007	65.21	13.8%	29.31	7.6%	8.36	2.2%	1.37	110.8%	2.23	85.8%	7,742,677	-8.2%
2008	73.28	27.9%	33.20	21.9%	8.28	1.2%	1.69	160.0%	3.26	171.7%	7,406,648	-12.2%
2009	82.51	44.0%	48.29	77.3%	8.21	0.4%	1.68	158.5%	1.94	61.7%	7,128,770	-15.5%
2010	79.84	39.4%	50.62	85.9%	8.15	-0.4%	1.92	195.4%	2.40	100.0%	7,448,713	-11.7%
2011	89.90	56.9%	54.40	99.8%	9.03	10.4%	1.92	195.4%	3.09	157.5%	7,475,999	-11.4%



# SUMMARY OF PERMIT DEPARTMENT OPERATIONS

---

<b>Permit Type</b>	<b>Number Issued</b>	<b>Amount Collected</b>
Annual Permits/Cab Cards	223	
Single Move Permits	298	
Driveway Permits	108	
Utility Permits	85	
Building Move Permits	-	
Tap In Permits	-	
Road Bore	31	
		\$ 62,100
Highway Permits/Bituminous Road Cuts	23	\$ -
MISS DIG Services	2,895	\$ 998
(calls forwarded to other agencies)	481	
Accident/Sign Damages Recovered		\$ 1,049
Highway Permits/Miscellaneous (no charge)	59	
<b>Total Permit Fees Collected</b>		<b>\$ 64,147</b>

# 2010-2011 CAPITAL OUTLAY

---

## EQUIPMENT AND BUILDING PURCHASES

### Buildings

Brine Well Pump Repair	\$ 11,662
Total Buildings	<u>\$ 11,662</u>

### Road Equipment

1 Cell Phone	\$ 130
2 Stihl Chain Saws	592
70 Mobile Radios	40,320
4 Portable Radios	2,124
5 Base Radios	4,204
3 Loader Bucket Scales	32,840
4 Weed Trimmers	351
1 Transmission for Tandem Truck	3,982
1 Traffic Counter	600
Total Road Equipment	<u>\$ 85,143</u>

### Office Equipment

Dell SQL Server	\$ 7,860
Total Office Equipment	<u>\$ 7,860</u>

**Total 2010-2011 Capital Outlay Expense** \$ 104,665

# STATUS OF ROAD MILEAGE

## JANUARY 1, 2012

TOWNSHIP	PRIMARY ROADS		TOTAL MILES PRIMARY	LOCAL ROADS		PLATTED STREETS		TOTAL MILES LOCAL	TOTAL MILES IN TWP	TOTAL MILES PAVED	TOTAL PERCENT PAVED	TOTAL MILES GRAVEL
	PAVED	GRAVEL		PAVED	GRAVEL	PAVED	GRAVEL					
Bellevue	18.40	-	18.40	3.66	44.78	0.23	-	48.67	67.07	22.29	33.23%	44.78
Benton	28.13	-	28.13	7.02	26.60	-	-	33.62	61.75	35.15	56.92%	26.60
Brookfield	18.41	-	18.41	9.19	44.83	-	-	54.02	72.43	27.60	38.11%	44.83
Carmel	23.36	-	23.36	8.26	33.66	0.33	-	42.25	65.61	31.95	48.70%	33.66
Chester	13.70	-	13.70	4.52	43.97	-	0.13	48.62	62.32	18.22	29.24%	44.10
Delta	54.84	-	54.84	8.98	7.37	93.88	0.64	110.87	165.71	157.70	95.17%	8.01
Eaton	25.99	-	25.99	19.28	18.61	4.28	-	42.17	68.16	49.55	72.70%	18.61
Eaton Rapids	24.09	-	24.09	7.59	35.70	-	-	43.29	67.38	31.68	47.02%	35.70
Hamlin	26.47	-	26.47	13.06	31.66	-	0.10	44.82	71.29	39.53	55.45%	31.76
Kalamo	18.30	-	18.30	8.26	39.10	0.26	-	47.62	65.92	26.82	40.69%	39.10
Oneida	23.51	-	23.51	16.19	14.55	9.47	0.19	40.40	63.91	49.17	76.94%	14.74
Roxand	20.72	-	20.72	10.07	34.52	-	-	44.59	65.31	30.79	47.14%	34.52
Sunfield	22.80	-	22.80	12.95	23.74	0.72	-	37.41	60.21	36.47	60.57%	23.74
Vermontville	17.51	-	17.51	3.56	38.57	-	-	42.13	59.64	21.07	35.33%	38.57
Walton	23.00	-	23.00	12.29	35.42	-	-	47.71	70.71	35.29	49.91%	35.42
Windsor	31.54	-	31.54	16.35	25.80	10.60	0.30	53.05	84.59	58.49	69.15%	26.10
<b>TOTAL</b>	<b>390.77</b>	<b>-</b>	<b>390.77</b>	<b>161.23</b>	<b>498.88</b>	<b>119.77</b>	<b>1.36</b>	<b>781.24</b>	<b>1,172.01</b>	<b>671.77</b>	<b>57.32%</b>	<b>500.24</b>