



SUPPLEMENTAL ANNUAL REPORT

1112 Reynolds Road | Charlotte, MI 48813 | 517-543-1630
www.eatoncountyrad.com





2011-2012 SUPPLEMENTAL ANNUAL REPORT

OCTOBER 1, 2011 – SEPTEMBER 30, 2012

DARRELL R. TENNIS, CHAIRMAN

Term expires 12-31-2013

TIMOTHY L. LAMOREAUX, VICE CHAIRMAN

Term expires 12-31-2016

LARRY L. ADAMS, MEMBER

Term expires 12-31-2012

BENJAMIN S. LYONS, MEMBER

Term expires 12-31-2014

BLAIR E. BALLOU, P.E., ENGINEER-MANAGER

LORI N. FRIEDLIS, CPA, FINANCE DIRECTOR

TABLE OF CONTENTS

Introduction	7
Organizational Chart	13
Financial Summary	15
Illustration of Revenues and Expenses	17
Illustration of Overall Primary and Local Road and Bridge Expenditures	19
Illustration of Primary Road and Bridge Expenditures	20
Illustration of Local Road and Bridge Expenditures	21
Summary of 2011-2012 Road Improvement Projects	23
Tabulation by Township of 2011-2012 Road Improvement Projects	25
Primary Maintenance Cost Summary by Township	42
Local Maintenance Cost Summary by Township	43
Primary Maintenance and Construction Preliminary Project List for 2013	45
Ten Year History of MTF Revenue, Township Contributions and County Board Appropriations	46
Five Year Township Contributions by Dollar and Per Capita	47
Primary Road Fund Transfers to Local Road Fund 2002-2012	49
Ten Year History of Road Resurfacing	50
History of Annual Pothole Patching Costs	51
History of Annual Insurance Costs	52
Material Cost Trends	53
Summary of Permit Department Operations	54
Capital Outlay Detail	55
Status of Road Mileage at January 1, 2013	56

INTRODUCTION

The Eaton County Road Commission was established in 1912 by resolution of the County Board of Supervisors and charged by law with the duty “to keep in reasonable repair, so that they shall be reasonably safe and convenient for public travel, all county roads, bridges, and culverts that are under their care and control, and which are open to public travel.” State law also requires the Road Commission to permit and regulate certain activities in road right-of-way, authorizes the Road Commission to set reasonable standards for adopting new roads into the county system and to enforce state restrictions on vehicle size and weight on county roads.

Over the past 101 years, the Eaton County road system has grown to include 391 miles that are now designated as Primary roads. Passage of the McNitt Act in 1931 abolished the old township road system and transferred over 650 miles of township roads to the Road Commission. These



old township roads, together with over 120 miles of subdivision streets built since that time, make up what is now the 781 mile system of County Local roads. Overall, 57%, or

673 miles, of all Eaton County roads are paved, with the remaining 500 miles being gravel surfaced but otherwise unimproved.

Routine maintenance by Road Commission workers is organized into four service areas. Crews working in the southeast and southwest areas of the County operate out of the main garage in Charlotte. The northwest quarter of the County is served by the crew based in Vermontville, and the northeast area covered by workers from our garage in Delta Township.

While the Road Commission continues to use its own forces for emergency and minor repairs, and most of the routine maintenance of snow removal, gravel blading and seal coating, all construction and most other heavy maintenance work is performed by private contractors selected through competitive bids. Many other routine maintenance operations that require specialized equipment such as mowing, pavement markings and street sweeping are also provided by private firms. The dollar amount contracted with private companies in fiscal year 2011-2012 equaled 47% of the total expenditures for road maintenance and construction.



Michigan Avenue Extension, Delta Township

On Primary roads in 2012 the Road Commission completed a project to extend Michigan Avenue westerly of Creyts Road to reach Canal Road in Delta Township. The one mile long project included turning lanes at all intersections, the installation of a traffic signal at Canal Road, together with new sidewalks and a

shared use path. Eighty percent of the \$2,841,748 construction cost of the project was funded by a Federal USTP grant, with Delta Charter Township providing the 20% local matching funds required by the grant.



Fog Seal on Five Point Hwy, Carmel Twp

By using \$355,000 in federal RSTP and state TEDF-D grant funds, together with a portion of the MTF funds available to the Road Commission, a new sealcoat surface was placed on 59 miles of Primary roads across the county in 2012.

A USTP grant also paid for 80% of the \$189,235 cost to place an asphalt slurry seal surface on the two miles of St. Joe Highway from Waverly Road to Creyts Road in 2012.

On Primary road bridges in 2012, the Road Commission was able to rehabilitate the Creyts Road bridge over the Grand River in Windsor Township. State and Federal Critical Bridge funds paid 95% of the \$548,000 construction cost to replace the expansion joints, repair and repaint the beams, and to replace the deteriorated bridge railings and approach guardrails.

On Local roads in 2012, in cooperation with township governments, the Road Commission resurfaced 1.54 miles of paved roads using hot mix asphalt and resurfaced 5.42 miles using sealcoat. On the 500 mile unimproved Local road system 10.16 miles were debermed, regraded and regravelled in 2012. Although an additional 11.8 miles of unimproved Local roads were scheduled to be resurfaced with gravel in 2012, the work

on those projects did not begin until after October 1, 2012, and they are not included in this report.

The Road Commission also completed a project in 2012 that began in 2011 to resurface all of the paved streets in the Windsor Glenn subdivision in Windsor Township. Ninety percent of the \$268,300 cost of that project was funded by a special assessment on the lands adjacent to the project, resulting in an average assessment of \$2,626.10 for each homeowner in the district.

On Local bridges in 2012, the Road Commission was able to remove and replace the Kalamo Highway bridge over the Battle Creek River in Eaton Township using State and Federal Critical Bridge funds to pay 95% of the \$492,215 contracted construction costs. The Board of Eaton Township and the Road Commission shared equally the \$122,000 local costs of the project.



Kalamo Hwy bridge reconstruction, Eaton Twp

While the Road Commission's first priority is public safety on all county roads, we continue to work towards keeping the existing good roads in Eaton County in good condition, rather than deferring needed maintenance in order to pay for the construction of new paved roads.

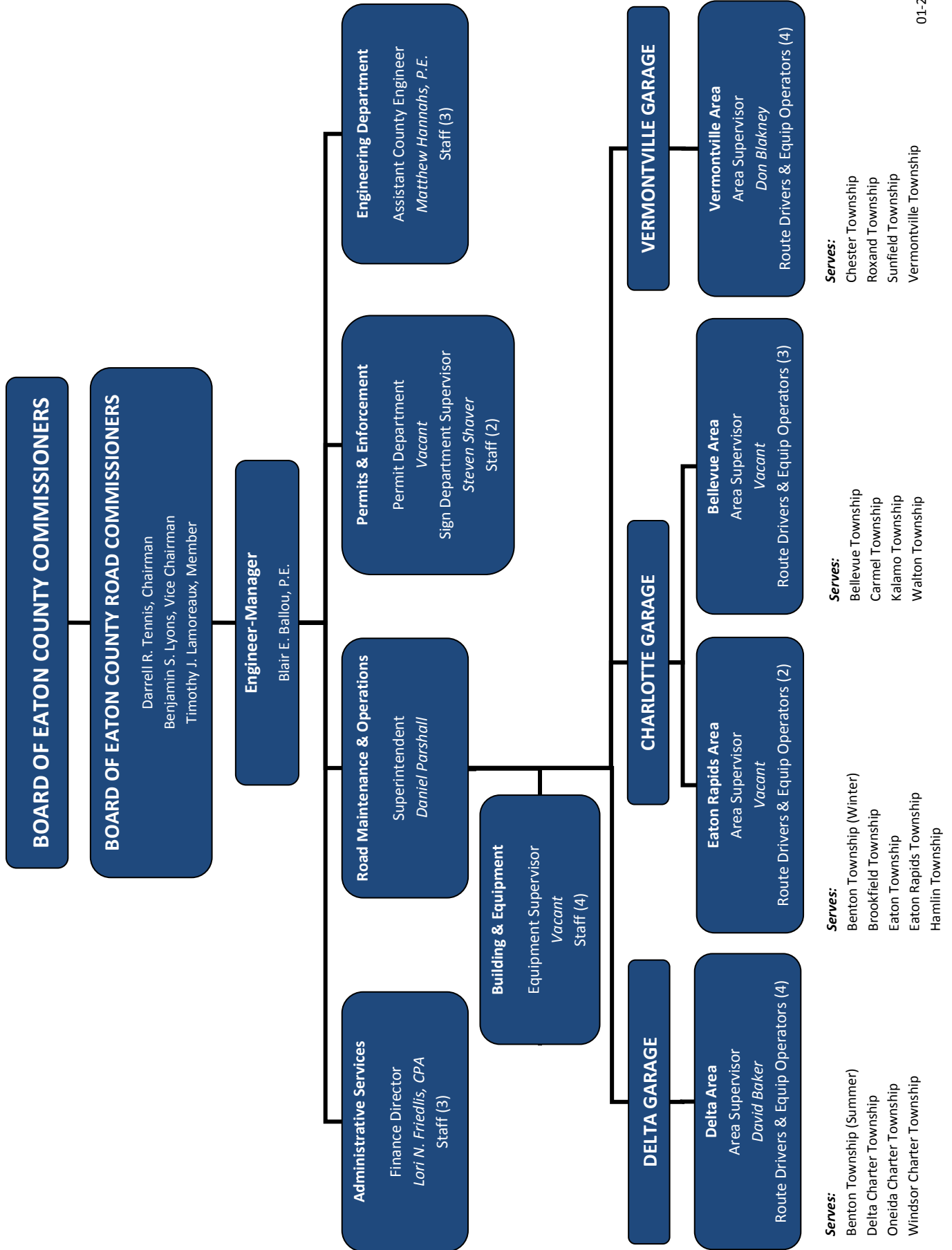
Recognizing the need for long range planning for improvements on the county road system, the Road Commission participates in the Tri-County Regional Planning

Commission planning process, and actively competes for Federal and State grant funds and other local government funds for specific improvement projects whenever possible.

The Road Commission welcomes comments, suggestions and discussion on both programs and specific projects at any time.



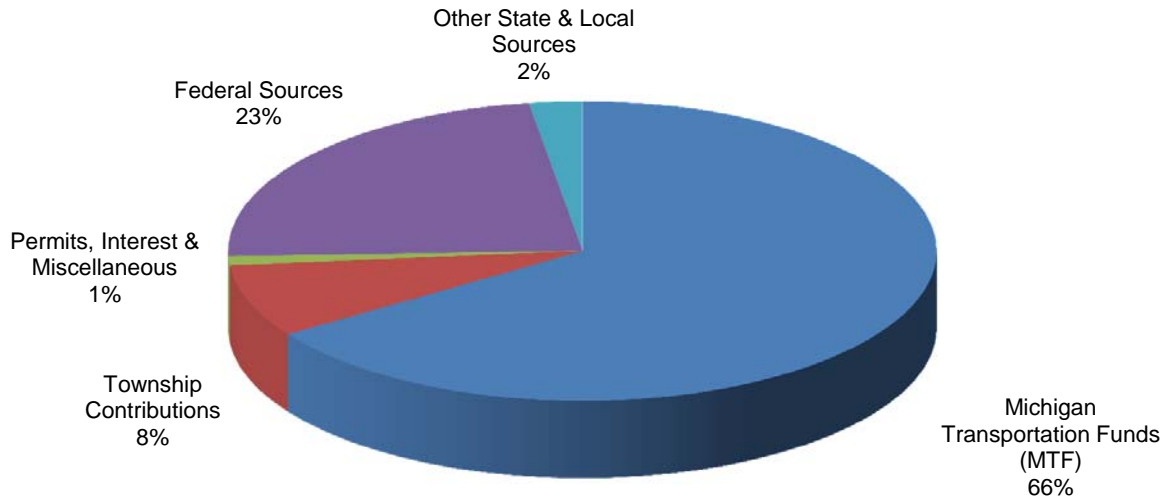
Michigan Avenue Extension, Delta Township



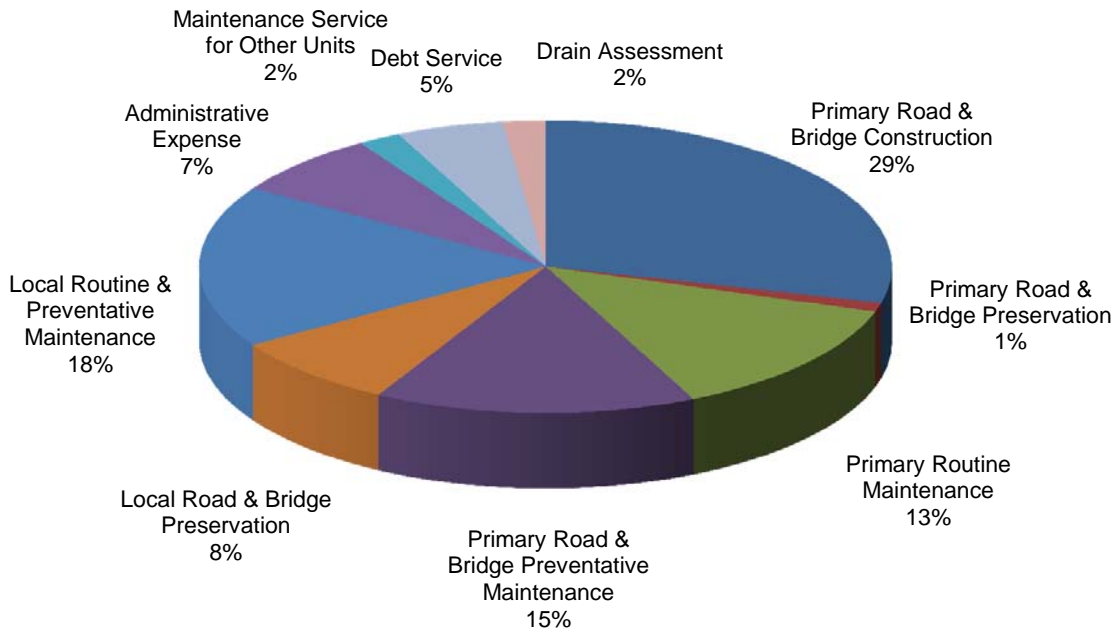
FINANCIAL SUMMARY

	2008-2009 ACTUAL	2009-2010 ACTUAL	2010-2011 ACTUAL	2011-2012 ACTUAL	2012-2013 BUDGET
REVENUES					
Permit Revenue	\$ 73,347	\$ 54,985	\$ 62,100	\$ 60,420	\$ 60,000
Intergovernmental:					
Federal Sources	1,847,755	1,719,023	1,800,509	2,660,381	4,645,562
Michigan Transportation Funds	7,128,770	7,448,713	7,475,999	7,545,228	7,500,000
Other State Sources	124,419	1,598,131	77,382	259,732	265,000
Township Contributions	737,984	697,087	42,128	902,228	930,191
Other Local Sources	79,048	36,912	378,851	20,441	10,650
Charges for Services	-	-	-	-	-
Interest and Rentals	1,141	187	334	379	300
Other Revenue	172,501	186,975	107,067	52,442	98,000
Total Revenues	\$ 10,164,965	\$ 11,742,013	\$ 9,944,370	\$ 11,501,251	\$ 13,509,703
EXPENDITURES					
Primary Roads and Bridges:					
Construction/Capacity Improvements	\$ 808,133	\$ 653,051	\$ 1,169,844	\$ 3,235,177	\$ 260,000
Preservation/Structural Improvements	1,559,489	3,197,949	313,265	152,936	4,663,650
Routine Maintenance	2,199,747	1,702,607	1,599,460	1,428,346	2,065,000
Preventative Maintenance	-	1,570,348	1,195,113	1,641,929	1,706,953
Local Roads and Bridges:					
Construction/Capacity Improvements	-	-	-	-	-
Preservation/Structural Improvements	677,240	53,331	109,397	883,973	1,551,062
Routine Maintenance	3,128,421	1,865,643	2,041,312	1,948,701	2,130,000
Preventative Maintenance	201,089	5,825	107,969	104,431	88,520
Equipment Expense (net)	319,963	194,497	64,180	(221,937)	-
Administration (net)	889,012	877,263	919,143	807,855	900,000
Maintenance Service for Other Units	321,323	260,323	193,139	226,566	250,000
Capital Outlay (net)	(266,400)	(235,866)	(211,060)	(203,257)	381,500
Debt Service	673,538	660,013	644,900	628,650	611,775
Drain Assessment	290,401	-	344,378	186,554	400,000
Total Expenditures	\$ 10,801,956	\$ 10,804,984	\$ 8,491,040	\$ 10,819,924	\$ 15,008,460
Net Revenues (Expenditures)	(636,991)	937,029	1,453,330	681,327	(1,498,757)
Fund Balance at Beginning of Year	2,534,425	1,897,434	2,834,463	4,287,793	4,969,120
Fund Balance at End of Year	\$ 1,897,434	\$ 2,834,463	\$ 4,287,793	\$ 4,969,120	\$ 3,470,363

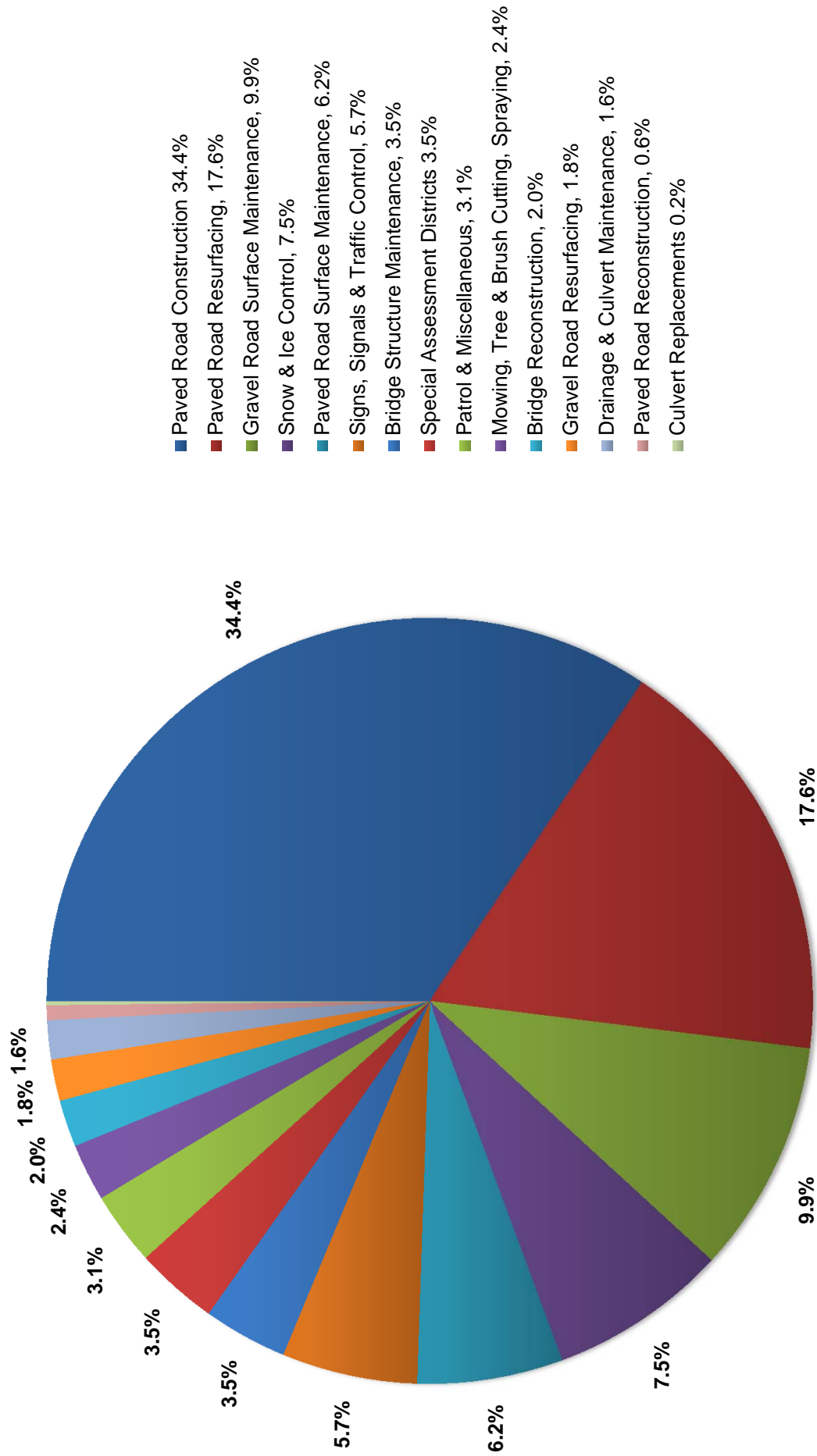
REVENUE



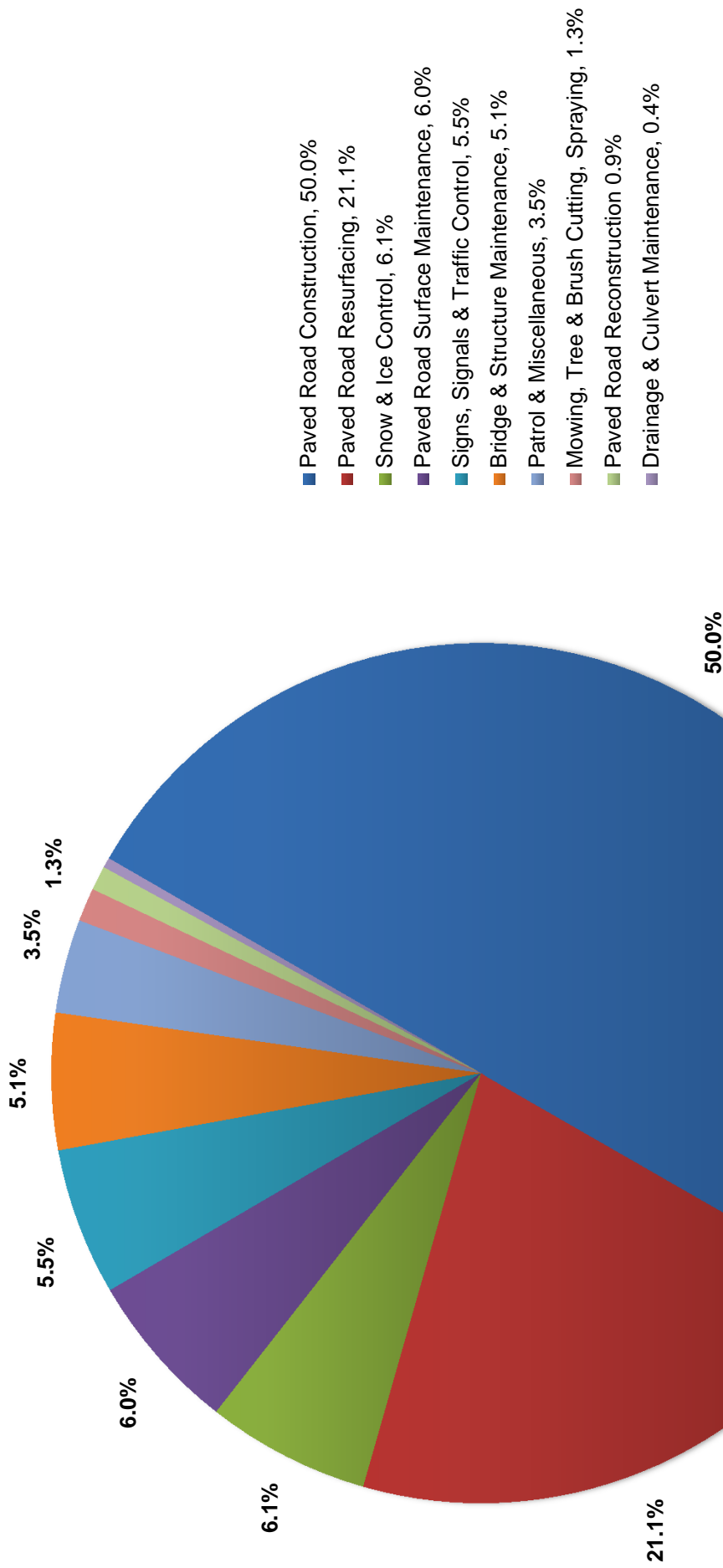
EXPENDITURES



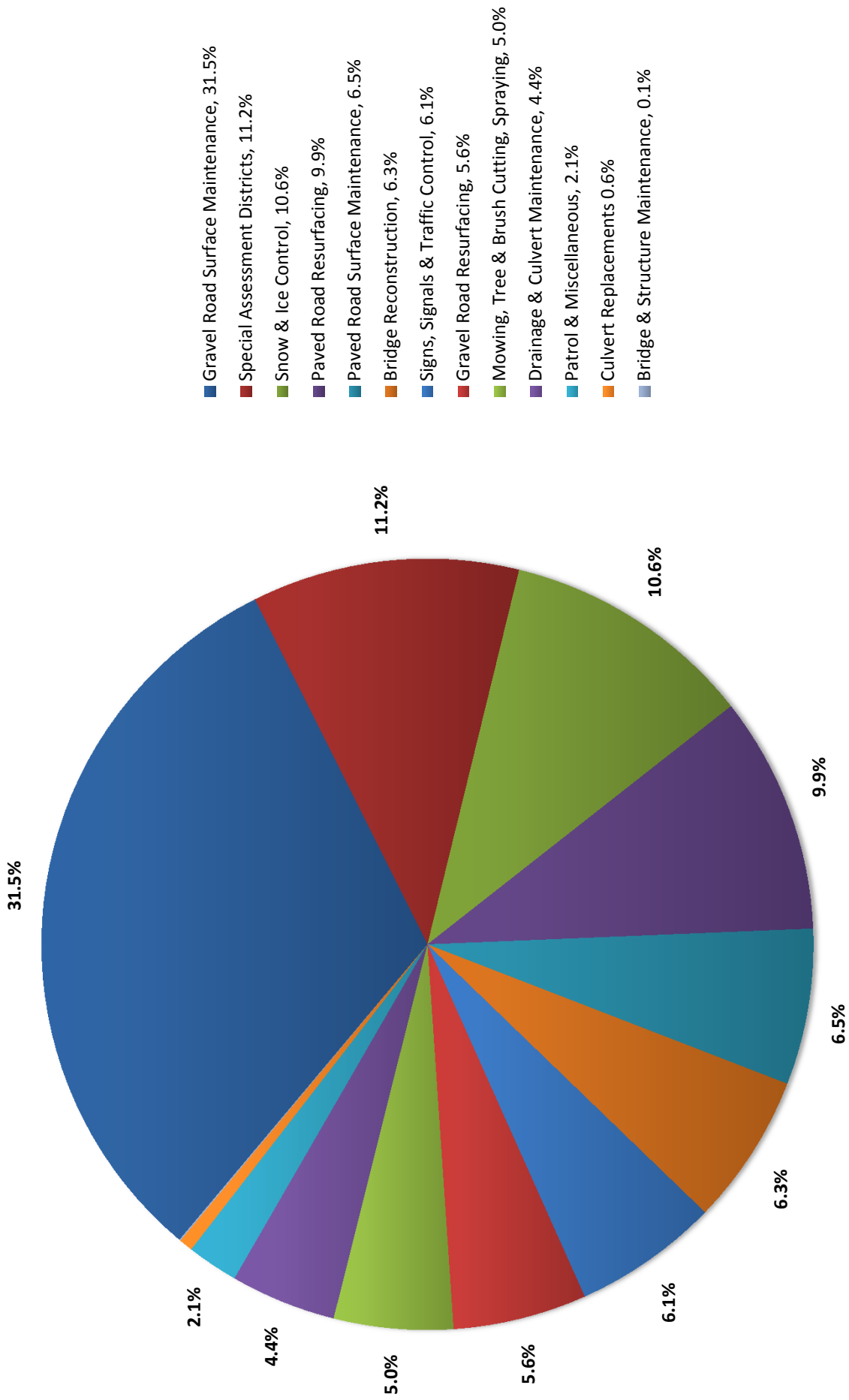
OVERALL PRIMARY AND LOCAL ROAD AND BRIDGE EXPENDITURES



PRIMARY ROAD AND BRIDGE EXPENDITURES



LOCAL ROAD AND BRIDGE EXPENDITURES



2011-2012

PRIMARY AND LOCAL ROAD IMPROVEMENTS

SUMMARY

Primary Roads:

Total Construction/Capacity Improvement Projects	\$ 3,235,177
Total Preservation/Structural Improvement Projects	\$ 152,936
Total Preventative Maintenance Projects	<u>\$ 1,641,929</u>
Total Primary Road and Bridge Projects	<u><u>\$ 5,030,042</u></u>

Local Roads:

Total Construction/Capacity Improvement Projects	\$ -
Total Preservation/Structural Improvement Projects	\$ 883,974
Total Preventative Maintenance Projects	<u>\$ 104,431</u>
Total Local Road and Bridge Projects	<u><u>\$ 988,405</u></u>

Grand Total **\$ 6,018,447**

2011-2012

PRIMARY AND LOCAL ROAD IMPROVEMENTS

BELLEVUE TOWNSHIP

Primary Roads:

Assyria Hwy, Curtis to Pease <i>2012 Sealcoat</i>	2.00 mi	\$	40,911
Pease Rd, Assyria to M-78 <i>2012 Sealcoat</i>	1.50 mi	\$	29,940

Local Roads:

Andrews Hwy, Ionia to Young <i>2011 Regravel</i>	1.45 mi	\$	22,412
Baseline Hwy, Babcock to south county line <i>2011 Regravel</i>	0.91 mi	\$	14,797
Stoney Point Hwy Structure, east of Curtis Rd <i>2012 Culvert Replacement</i>		\$	1,832

Bellevue Township Total \$ 109,892

Bellevue Township Contributions \$ 18,510

2011-2012

PRIMARY AND LOCAL ROAD IMPROVEMENTS

BENTON TOWNSHIP

Primary Roads:

Cochran Rd, M-50 to Pinch <i>2012 Sealcoat</i>	3.20 mi	\$	53,640
Otto Rd, Needmore to Doane <i>2012 Sealcoat</i>	0.50 mi	\$	60

Local Roads:

Benton Township Total		\$	53,700
Benton Township Contributions		\$	-

2011-2012

PRIMARY AND LOCAL ROAD IMPROVEMENTS

BROOKFIELD TOWNSHIP

Primary Roads:

Bellevue Hwy, Cochran to Brookfield <i>2012 Sealcoat</i>	2.00 mi	\$	45,284
Bellevue Hwy, Narrow Lake to Royston <i>2012 Sealcoat</i>	3.00 mi	\$	63,223

Local Roads:

Brookfield Township Total	\$	108,507
Brookfield Township Contributions	\$	-

2011-2012

PRIMARY AND LOCAL ROAD IMPROVEMENTS

CARMEL TOWNSHIP

Primary Roads:

Five Point Hwy, Battle Creek to Cochran <i>2012 Sealcoat</i>	3.60 mi	\$	76,949
---	---------	----	--------

Local Roads:

Carmel Township Total	\$	76,949
Carmel Township Contributions	\$	29,363

2011-2012

PRIMARY AND LOCAL ROAD IMPROVEMENTS

CHESTER TOWNSHIP

Primary Roads:

Mulliken Rd, M-50 to Needmore <i>2012 Sealcoat</i>	2.50 mi	\$	42,519
Vermontville Hwy, Ainger to Mulliken <i>2012 Sealcoat</i>	2.00 mi	\$	44,960

Local Roads:

Hubbard Rd, Vermontville to Kinsel <i>2011 Regravel</i>	2.02 mi	\$	31,906
--	---------	----	--------

Chester Township Total \$ 119,385

Chester Township Contributions \$ 15,870

2011-2012

PRIMARY AND LOCAL ROAD IMPROVEMENTS

DELTA TOWNSHIP



Primary Roads:

Creyts Rd, I-496 to Saginaw <i>2010 ARRA Asphalt Mill & Overlay</i>	1.47 mi	\$	107
Creyts Rd, from M-43 north <i>2010 ARRA Asphalt Mill & Overlay</i>	0.45 mi	\$	38,943
Creyts Rd, M-43 to Old River Trail <i>2009 Non-Motorized Path</i>		\$	23,027
Delta Center Elementary SRTS, St. Joe, Canal and Williamsburg - Non-Motorized <i>2010 Safe Routes to Schools</i>		\$	12,303
Elmwood Rd, Saginaw to Willow <i>2013 Resurface</i>	1.00 mi	\$	2,563
Michigan Ave, Canal to Creyts <i>2012 New Location</i>	1.01 mi	\$	3,227,489
St. Joe Hwy, Broadbent to Marketplace <i>2013 Add turn lanes, bicycle lanes, sidewalk & signalize intersection</i>	0.41 mi	\$	50,207
St. Joe Hwy, Creyts to Waverly <i>2012 Slurry Seal</i>	2.00 mi	\$	230,876
St. Joe Hwy, at Nixon <i>2010 Widen Intersection</i>	0.23 mi	\$	129
Willow-Canal Roundabout <i>2007 Reconstruct Intersection</i>		\$	7,559
Willow Hwy - Watson & Watson Drain <i>2009 Drain Enhancement Project</i>		\$	24,672

2011-2012

PRIMARY AND LOCAL ROAD IMPROVEMENTS

DELTA TOWNSHIP CONTINUED

Local Roads:

Countryside Dr, St. Joe to Denmark <i>2011 Asphalt Overlay</i>	0.45 mi	\$	68,048
Madrid Dr, Canal to Taragreen <i>2011 Asphalt Overlay</i>	0.23 mi	\$	26,160
Sangria Ln, Madrid to end <i>2011 Asphalt Overlay</i>	0.08 mi	\$	8,836
Taragreen Dr, Sangria to end <i>2011 Asphalt Overlay</i>	0.18 mi	\$	20,021
Trenton/Pembrook Pl, Benington to Arlington <i>2011 Asphalt Overlay</i>	0.20 mi	\$	20,505
Westhaven Blvd, St. Joe to Westvale <i>2011 Asphalt Overlay</i>	0.25 mi	\$	23,482
Wolf Run Dr, Springtree to Windsong <i>2011 Asphalt Overlay</i>	0.15 mi	\$	20,630

Delta Township Total \$ 3,805,557

Delta Township Contributions \$ 486,801

2011-2012

PRIMARY AND LOCAL ROAD IMPROVEMENTS

EATON TOWNSHIP



Primary Roads:

Island Hwy, .25 mi E of Casler to Royston <i>2011 Sealcoat</i>	3.03 mi	\$	360
Island Hwy, Charlotte city limit to Casler <i>2011 Sealcoat</i>	2.00 mi	\$	180

Local Roads:

Broadway Hwy, Brookfield to Tubbs <i>2012 Sealcoat</i>	1.35 mi	\$	21,981
Fairview Hwy, Benton west to end of pavement <i>2010 Regravel</i>	0.76 mi	\$	11,248
Fairview Hwy, Otto to end of pavement <i>2012 Sealcoat</i>	0.36 mi	\$	9,285
Kalamo Hwy Bridge, between Brookfield and Tubbs <i>2012 Replace</i>		\$	186,175
Long Hwy, Perkey to Ackley <i>2011 Skin, Patch & Seal</i>	1.26 mi	\$	559
Sherman Rd, Five Point to Broadway <i>2012 Sealcoat</i>	1.01 mi	\$	17,309
Stewart Rd, Long to M-50 <i>2011 Sealcoat</i>	1.01 mi	\$	180
Tubbs Rd, Broadway to Kalamo <i>2012 Sealcoat</i>	1.09 mi	\$	19,990

Eaton Township Total \$ 267,267

Eaton Township Contributions \$ 117,673

2011-2012

PRIMARY AND LOCAL ROAD IMPROVEMENTS

EATON RAPIDS TOWNSHIP

Primary Roads:

Island Hwy, Canfield to Canal <i>2012 Sealcoat</i>	2.00 mi	\$	49,086
Island Hwy, Smith Rd & Columbia Hwy, Canal to Waverly <i>2011 Sealcoat</i>	4.00 mi	\$	360
Five Point Hwy, Whittum to Eaton Rapids city limit <i>2012 Sealcoat</i>	0.50 mi	\$	10,190
Royston Rd, M-50 to Island <i>2012 Sealcoat</i>	2.50 mi	\$	57,871

Local Roads:

Bell Hwy, Canfield to Gunnell <i>2011 Regravel</i>	1.00 mi	\$	15,859
Canfield Rd, Long to Bell <i>2011 Regravel</i>	1.00 mi	\$	16,281
Kemler Rd, M-50 north to end of pavement <i>2012 Sealcoat</i>	0.61 mi	\$	16,627
Smithville Rd, Barnes to Plains <i>2010 Regravel</i>	1.00 mi	\$	16,948
Wilbur Hwy, Canal to Smith <i>2011 Regravel</i>	1.01 mi	\$	16,187
Eaton Rapids Township Total		\$	199,409
Eaton Rapids Township Contributions		\$	52,849

2011-2012

PRIMARY AND LOCAL ROAD IMPROVEMENTS

HAMLIN TOWNSHIP

Primary Roads:

Five Point Hwy, Freeman to Whittum <i>2012 Sealcoat</i>	0.75 mi	\$	11,859
Royston Rd, Five Point to Bellevue <i>2011 Sealcoat</i>	3.85 mi	\$	360
Spicerville Hwy, Royston to M-99 <i>2012 Sealcoat</i>	3.10 mi	\$	54,791
Springport Rd, Spicerville to the county line <i>2012 Sealcoat</i>	5.25 mi	\$	93,488

Local Roads:

Houston Rd, Bellevue to Holmes <i>2012 Sealcoat</i>	1.00 mi	\$	18,500
Wilson Rd Structure, over the Peacock Extension Intercounty Drain <i>2013 Culvert Replacement</i>		\$	1,918

Hamlin Township Total \$ 180,916

Hamlin Township Contributions \$ -

2011-2012

PRIMARY AND LOCAL ROAD IMPROVEMENTS

KALAMO TOWNSHIP

Primary Roads:

Local Roads:

Perry Rd, at unnamed drain in sections 14 and 15 <i>2012 Culvert Replacement</i>	\$	13,119
---	----	--------

Kalamo Township Total	\$	13,119
------------------------------	----	--------

Kalamo Township Contributions	\$	2,400
--------------------------------------	----	-------

2011-2012

PRIMARY AND LOCAL ROAD IMPROVEMENTS

ONEIDA TOWNSHIP



Primary Roads:

Mt. Hope Hwy, Cochran to Oneida <i>2012 Sealcoat</i>	3.00 mi	\$	66,481
Needmore Hwy, Cochran to Otto <i>2013 Sealcoat</i>	2.00 mi	\$	60

Local Roads:

Otto Rd, Needmore to Strange <i>2011 Regravel</i>	1.01 mi	\$	18,869
--	---------	----	--------

Oneida Township Total \$ 85,410

Oneida Township Contributions \$ 9,392

2011-2012

PRIMARY AND LOCAL ROAD IMPROVEMENTS

ROXAND TOWNSHIP

Primary Roads:

Dow Rd, M-50 to Grace <i>2012 Sealcoat</i>	4.02 mi	\$	65,484
Mt. Hope Hwy, Dow to Cochran <i>2012 Sealcoat</i>	6.00 mi	\$	111,061
Needmore Hwy, M-50 to Moyer <i>2013 Sealcoat</i>	3.00 mi	\$	60
Needmore Hwy, Moyer to Cochran <i>2013 Sealcoat</i>	2.50 mi	\$	60

Local Roads:

Roxand Township Total	\$	176,665
Roxand Township Contributions	\$	-

2011-2012

PRIMARY AND LOCAL ROAD IMPROVEMENTS

SUNFIELD TOWNSHIP



Primary Roads:

Dow Rd, Grace to M-43 <i>2012 Sealcoat</i>	0.67 mi	\$	13,071
Kelly Hwy, Hager to Brown <i>2012 Sealcoat</i>	4.12 mi	\$	66,446
Mt. Hope Hwy, M-50 to Dow <i>2012 Sealcoat</i>	1.50 mi	\$	26,239

Local Roads:

Sunfield Township Total	\$	105,756
Sunfield Township Contributions	\$	9,587

2011-2012

PRIMARY AND LOCAL ROAD IMPROVEMENTS

VERMONTVILLE TOWNSHIP

Primary Roads:

Local Roads:

Vermontville Township Total \$ -

Vermontville Township Contributions \$ -

2011-2012

PRIMARY AND LOCAL ROAD IMPROVEMENTS

WALTON TOWNSHIP

Primary Roads:

Local Roads:

Walton Township Total	\$	-
Walton Township Contributions	\$	12,660

2011-2012

PRIMARY AND LOCAL ROAD IMPROVEMENTS

WINDSOR TOWNSHIP



Primary Roads:

Canal/Windsor Intersection <i>2013 Widen, Add Turn Lanes</i>		\$	1,114
Creyts Rd Bridge, between Billwood and Hart <i>2012 Preventative Maintenance</i>		\$	329,076
Smith Rd, Vermontville to Dimondale village limit <i>2012 Sealcoat</i>	1.00 mi	\$	18,610
Vermontville Hwy, Canal to M-99 <i>2012 Sealcoat</i>	2.00 mi	\$	37,834
Vermontville Hwy, Royston to Canal <i>2011 Sealcoat</i>	2.96 mi	\$	540

Local Roads:

Windsor Glen Special Assessment District <i>2011 S.A.D.</i>	1.18 mi	\$	328,740
--	---------	----	---------

Windsor Township Total \$ 715,914

Windsor Township Contributions \$ 13,041

2011-2012 PRIMARY ROUTINE MAINTENANCE

SUMMARY BY TOWNSHIP

TOWNSHIP	ROAD COMMISSION COST	MILES	AVERAGE COST PER MILE
Bellevue	\$ 61,131	18.40	\$ 3,322
Benton	79,526	28.13	2,827
Brookfield	55,484	18.41	3,014
Carmel	69,643	23.36	2,981
Chester	46,841	13.70	3,419
Delta	418,655	54.84	7,634
Eaton	84,263	25.99	3,242
Eaton Rapids	84,818	24.09	3,521
Hamlin	82,899	26.47	3,132
Kalamo	43,399	18.30	2,372
Oneida	60,194	23.51	2,560
Roxand	46,964	20.72	2,267
Sunfield	69,096	22.80	3,031
Vermontville	51,938	17.51	2,966
Walton	74,671	23.00	3,247
Windsor	98,824	31.54	3,133
Total Primary Maintenance	\$ 1,428,346	390.77	\$ 3,655

2011-2012 LOCAL ROUTINE MAINTENANCE

SUMMARY BY TOWNSHIP

TOWNSHIP	ROAD COMMISSION COST	MILES	AVERAGE COST PER MILE
Bellevue	\$ 123,125	48.67	\$ 2,530
Benton	97,705	33.62	2,906
Brookfield	138,182	54.02	2,558
Carmel	122,509	42.25	2,900
Chester	114,529	48.62	2,356
Delta	211,939	110.87	1,912
Eaton	113,185	42.17	2,684
Eaton Rapids	142,039	43.29	3,281
Hamlin	106,297	44.82	2,372
Kalamo	97,740	47.62	2,052
Oneida	96,205	40.40	2,381
Roxand	123,408	44.59	2,768
Sunfield	80,490	37.41	2,152
Vermontville	104,744	42.13	2,486
Walton	108,784	47.71	2,280
Windsor	167,820	53.05	3,163
Total Local Maintenance	\$ 1,948,701	781.24	\$ 2,494

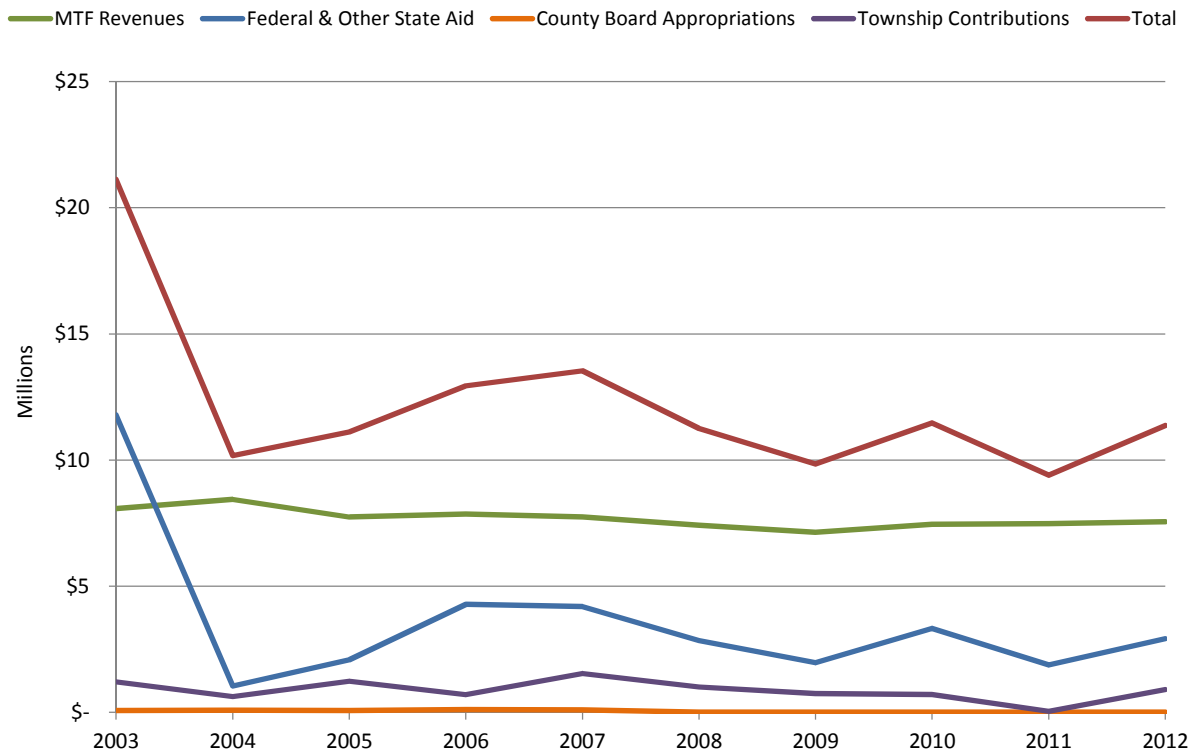
2012-2013 PRIMARY MAINTENANCE AND CONSTRUCTION PROJECTS

PRELIMINARY LISTING AS OF FEBRUARY 20, 2013

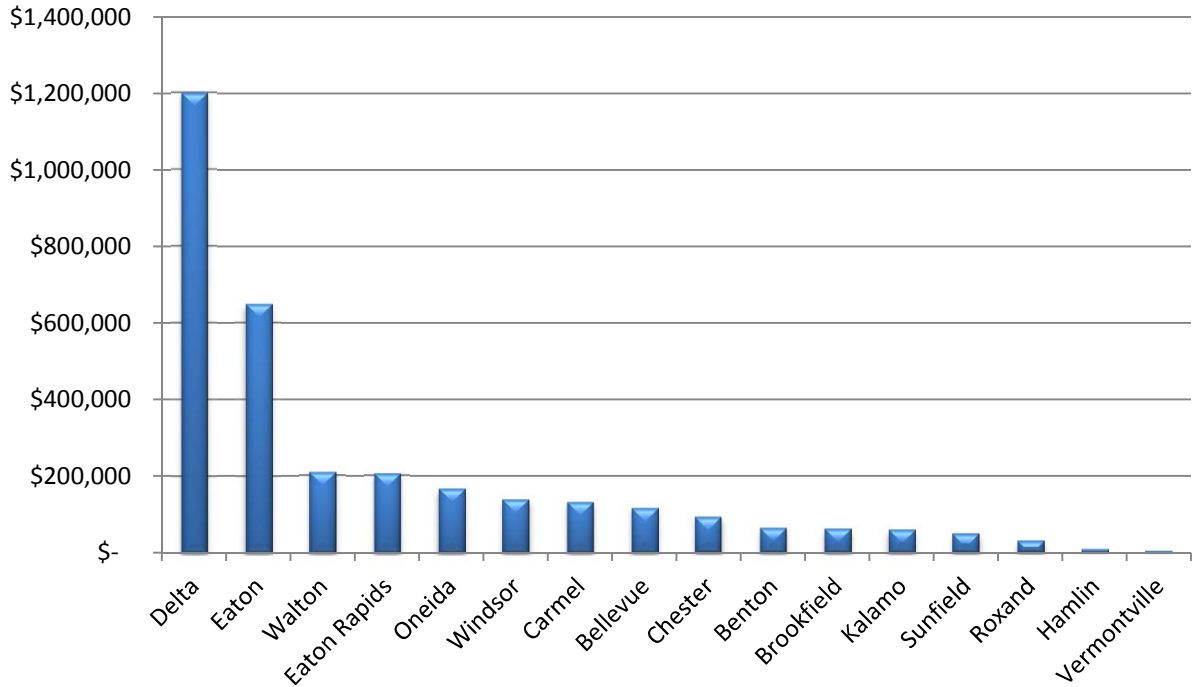
TOWNSHIP	ROAD NAME	FROM	TO	LENGTH	PROPOSED WORK
Bellevue	Greenfield	M-78	Bellevue village limit	0.80	Single seal
Bellevue	Ionia	M-78	Baseline	1.01	Single seal
Bellevue	Sand	M-78	Co. line	1.67	Single seal
Benton	Otto	Needmore	Doane	0.50	Single seal
Benton	Vermontville	Benton	Potterville city limit	3.20	Single seal
Benton	Windsor	M-100	Royston	1.00	Single seal
Brookfield	Cochran	Baseline	Butterfield	1.00	Single seal
Brookfield	Narrow Lake	Bellevue	Five Point	4.00	Single seal
Delta	Elmwood	M-43	Willow	1.00	Mill and overlay
Delta	Ingersoll	Delta River Dr.	Eaton Hwy	0.36	Ultra thin overlay
Delta	Mt. Hope	Royston	Canal	3.00	Single seal
Delta	St. Joe	Broadbent	Marketplace	0.50	Reconstruct
Delta	Willow	Twp boundary	Canal	2.83	Single seal
Delta	Delta River Drive	Waverly	Webster	2.48	Ultra thin overlay
Eaton	Otto	Packard	Kinsel	1.00	Single seal
Eaton	Packard	Lansing	Stewart	2.05	Single seal
Eaton Rapids	Canal	Bentley	Eaton Rapids city limit	1.75	Single seal
Eaton Rapids	Plains	Waverly	Eaton Rapids city limit	1.61	Single seal
Eaton Rapids	Waverly	Columbia	Toles	3.00	Single seal
Kalamo	Ionia	Five Point	M-79	4.00	Single seal
Oneida	Mt. Hope	Oneida	Royston	3.00	Single seal
Oneida	Needmore	Cochran	Otto	2.00	Single seal
Oneida	St. Joe	Oneida	Royston	3.00	Single seal
Oneida	Willow	Grand Ledge city limit	Twp boundary	0.77	Single seal
Roxand	Needmore	M-50	Cochran	5.50	Single seal
Sunfield	Ionia	Mt. Hope	M-43	3.00	Single seal
Sunfield	Mt. Hope	M-50	Co. line	4.50	Single seal
Walton	Ainger	I-69	Olivet city limits	0.57	Single seal
Walton	Bellevue	Marshall	Cochran	4.00	Single seal
Walton	Marshall	I-69	Nye	2.80	Rubblize and resurface
Windsor	Billwood	Canal	Creyts	1.07	Single seal
Windsor	Canal/Windsor Intersection			0.40	Reconstruct
Windsor	Holt	Dimondale city limit	Waverly	2.03	Single seal
Windsor	Nixon	Vermontville	Windsor	1.62	Single seal
Windsor	Windsor	Royston	Nixon	1.00	Single seal
				64.48	Single Seal
				0.90	Reconstruct
				6.64	Resurface
				<u>72.02</u>	

TEN YEAR HISTORY MTF REVENUE, TOWNSHIP CONTRIBUTIONS AND COUNTY BOARD APPROPRIATIONS

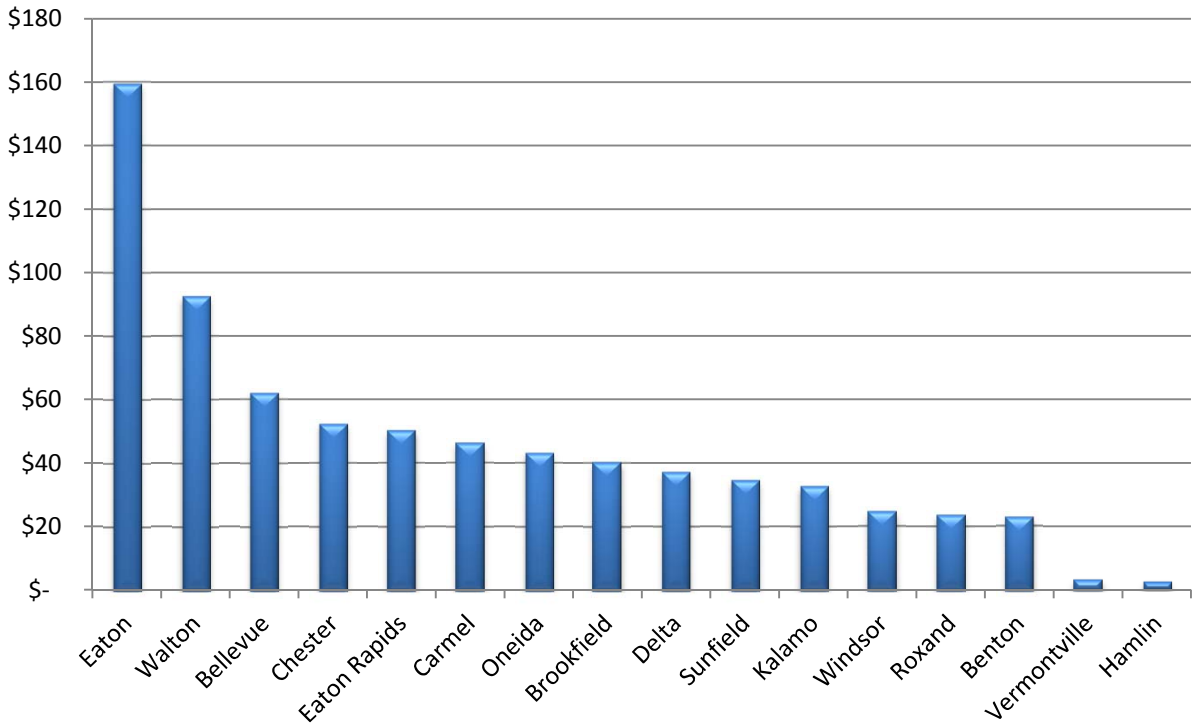
YEAR	EATON COUNTY SHARE OF MTF	FEDERAL & OTHER STATE AID	COUNTY BOARD APPROP.	TOWNSHIP CONTR.	TOTAL	TOWNSHIP CONTR. AS % OF MTF
2003	8,069,275	11,784,803	68,275	1,200,840	21,123,193	14.9%
2004	8,435,997	1,043,383	69,850	623,287	10,172,517	7.4%
2005	7,740,851	2,077,221	64,792	1,234,861	11,117,725	16.0%
2006	7,858,406	4,276,380	107,344	696,861	12,938,991	8.9%
2007	7,742,677	4,183,260	85,957	1,528,846	13,540,740	19.7%
2008	7,406,648	2,841,462	-	1,006,718	11,254,828	13.6%
2009	7,128,770	1,972,174	-	737,984	9,838,928	10.4%
2010	7,448,713	3,317,154	-	697,087	11,462,954	9.4%
2011	7,475,999	1,877,891	-	42,128	9,396,018	0.6%
2012	7,545,228	2,920,113	-	902,228	11,367,569	12.0%



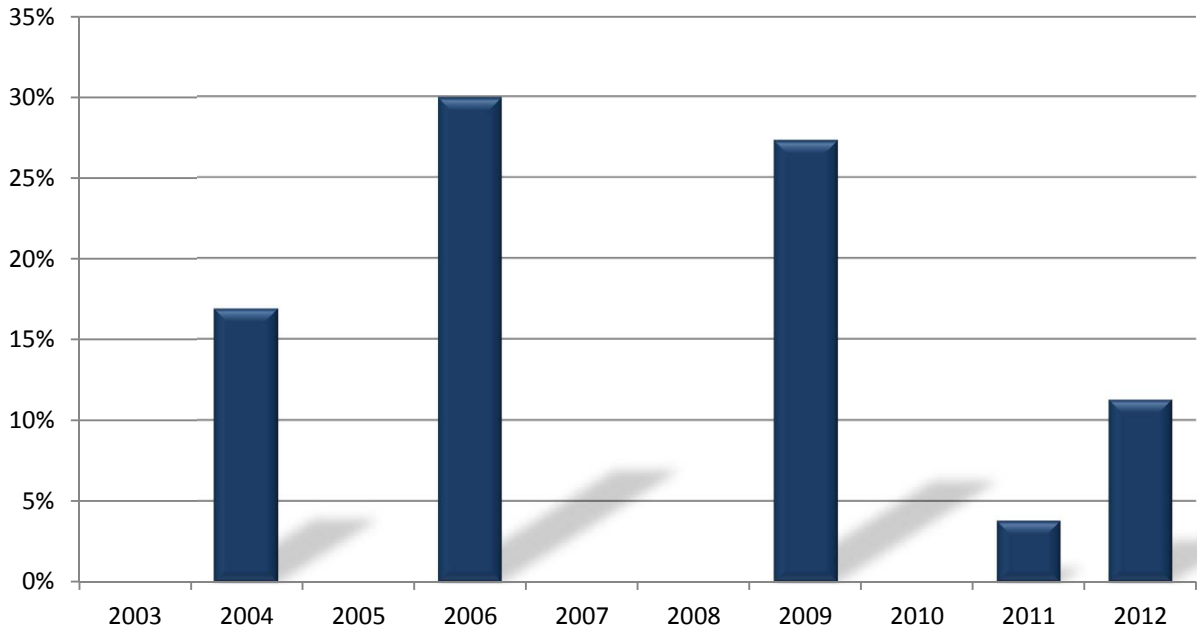
Five Year Township Contributions by Dollar



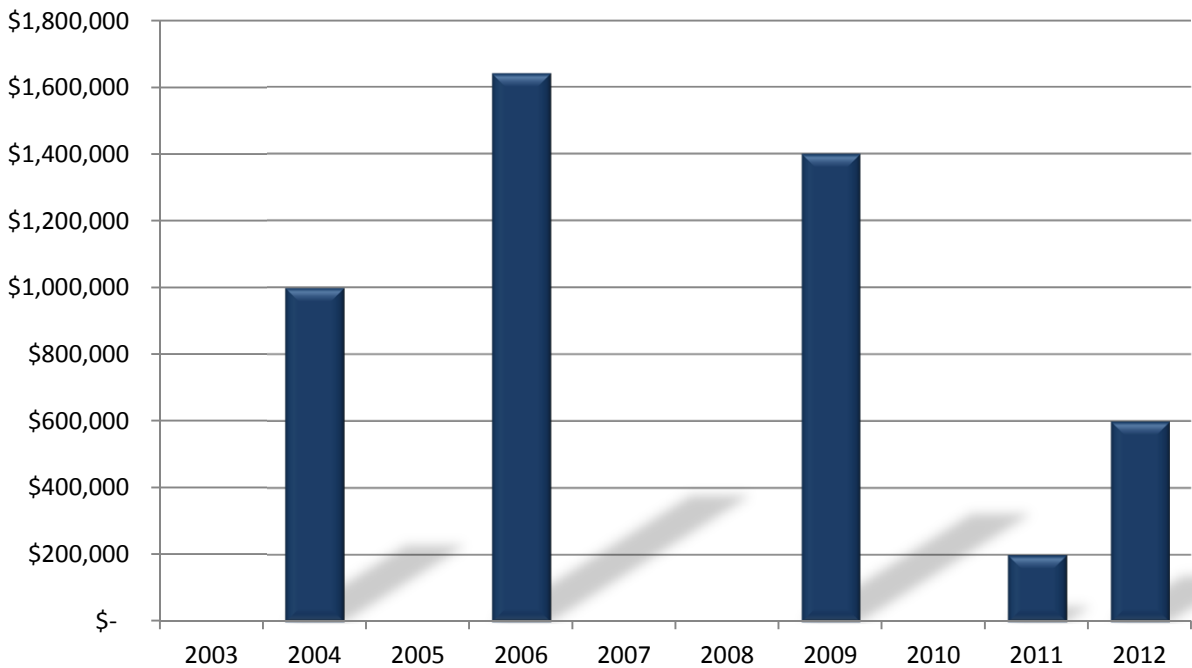
Five Year Township Contributions Per Capita



**TRANSFERS FROM PRIMARY ROAD FUND TO LOCAL ROAD FUND
AS A PERCENT OF TOTAL PRIMARY MTF DISTRIBUTIONS
2003-2012**

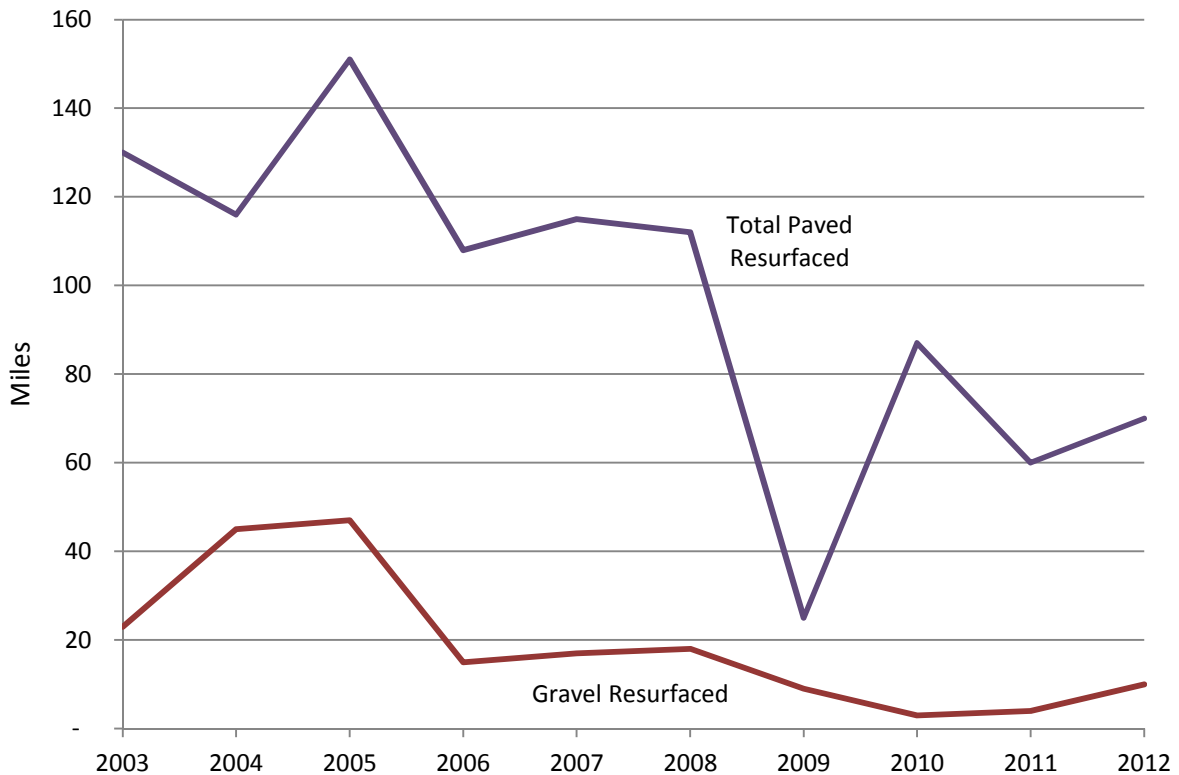


**DOLLAR TRANSFERS FROM PRIMARY ROAD FUND TO LOCAL
ROAD FUND
2003-2012**



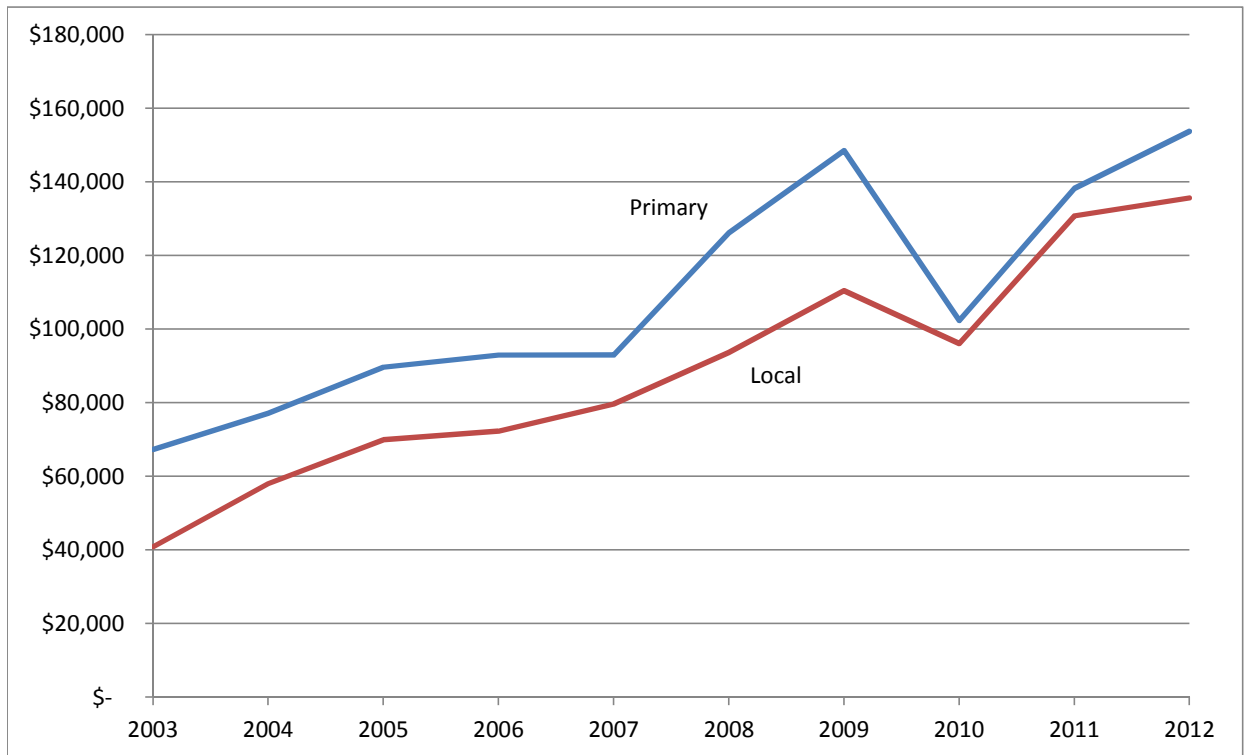
TEN YEAR HISTORY ROAD RESURFACING

<u>YEAR</u>	<u>PRIMARY PAVED MILES RESURFACED</u>	<u>LOCAL PAVED MILES RESURFACED</u>	<u>TOTAL MILES RESURFACED</u>	<u>LOCAL MILES GRAVELLED</u>
2003	96	34	130	23
2004	84	32	116	45
2005	106	45	151	47
2006	65	43	108	15
2007	86	29	115	17
2008	97	15	112	18
2009	2	23	25	9
2010	87	-	87	3
2011	56	4	60	4
2012	61	9	70	10



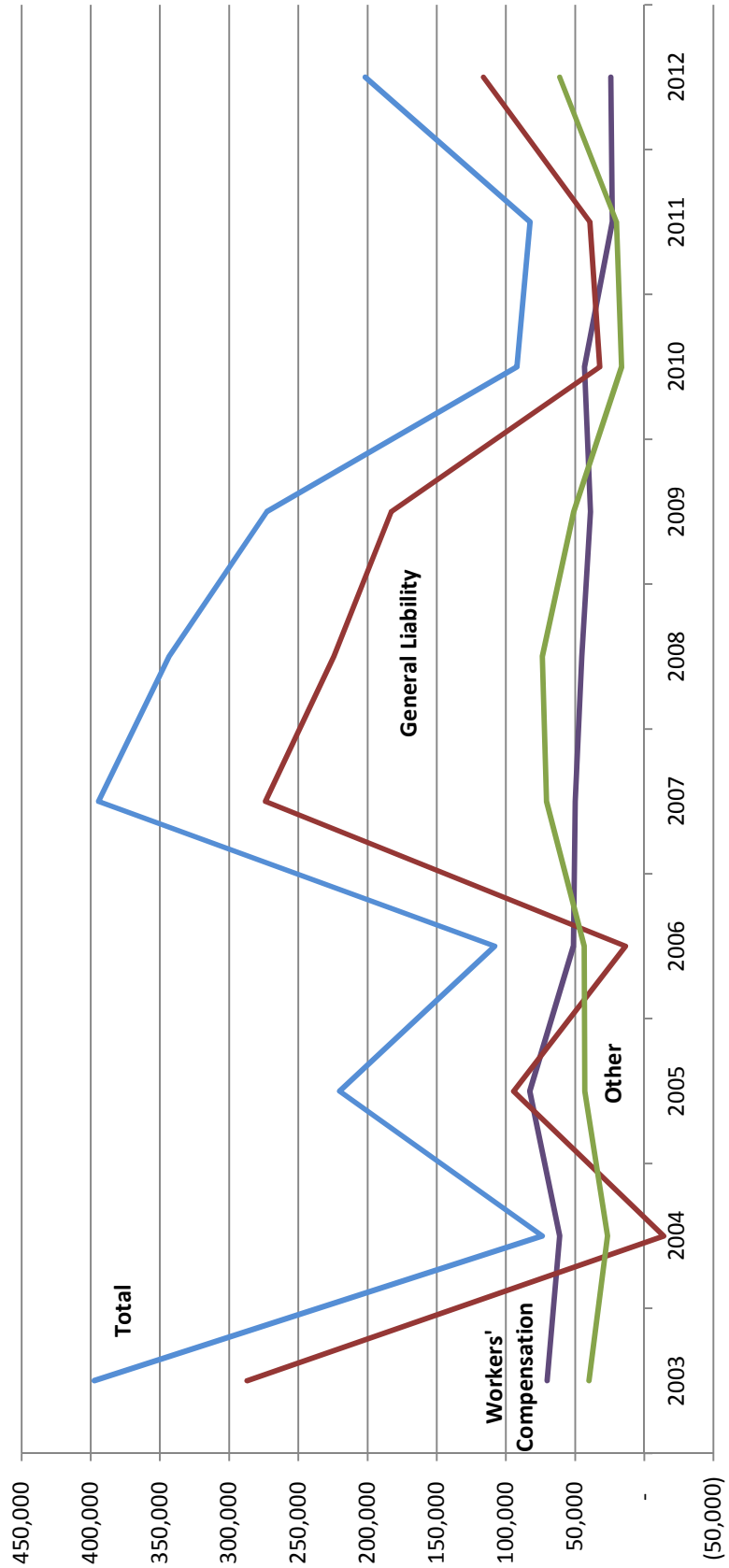
ANNUAL POTHOLE PATCHING COSTS

YEAR	PRIMARY TONS	LOCAL TONS	TOTAL TONS	PRIMARY COST	LOCAL COST	TOTAL COST	AVG COST/MILE OF PRIMARY	AVG COST/MILE OF LOCAL	AVG COST/TON OF COLD PATCH
2003	208	111	319	\$ 67,330	\$ 40,844	\$ 108,174	\$ 176	\$ 149	\$ 339
2004	205	157	362	77,144	58,005	135,149	202	211	373
2005	260	213	473	89,604	69,948	159,552	235	254	337
2006	265	147	412	92,932	72,276	165,208	243	263	401
2007	380	179	559	92,925	79,671	172,596	243	290	309
2008	269	206	475	126,126	93,649	219,775	330	341	463
2009	304	226	530	148,508	110,430	258,938	389	402	489
2010	168	182	350	102,375	96,049	198,424	262	349	567
2011	217	270	487	138,209	130,727	268,936	354	465	552
2012	208	236	444	153,715	135,620	289,335	393	483	652



ANNUAL INSURANCE COSTS

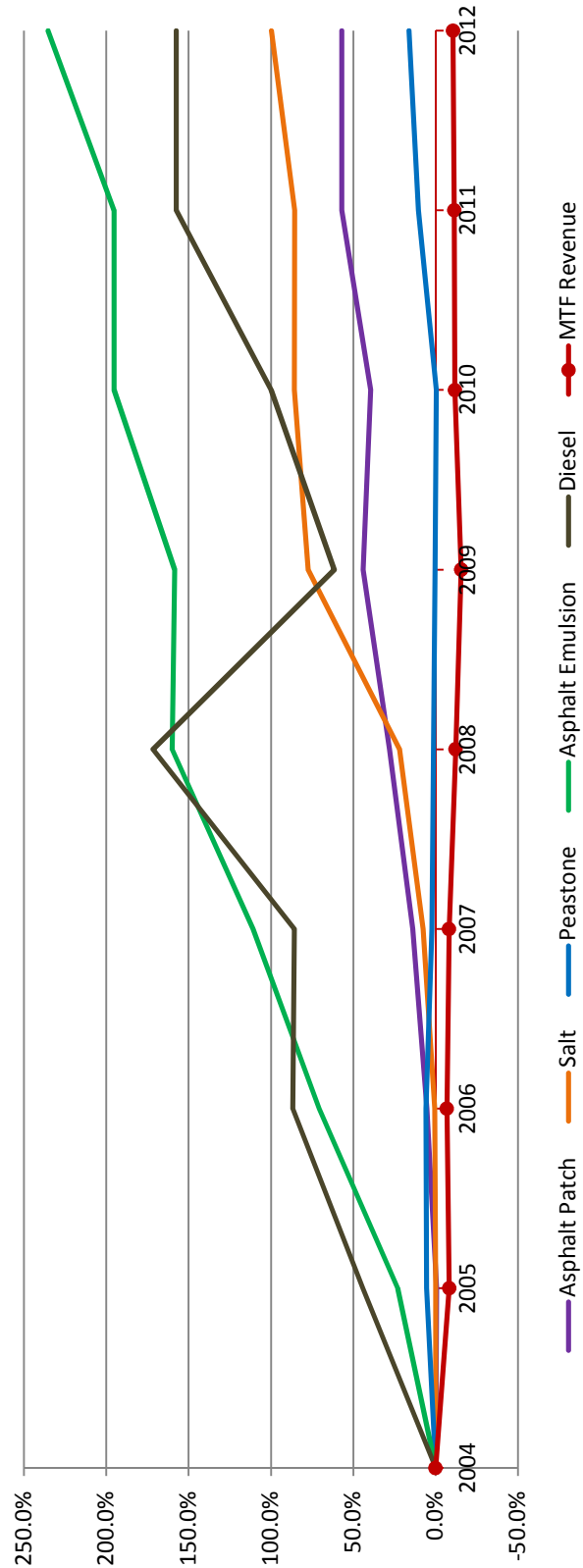
YEAR	2003	2004	2005	2006	2007	2008	2009	2010	2011	2012
Workers' Compensation	70,272	61,139	82,677	51,154	50,000	45,145	38,937	43,319	23,124	24,163
General Liability	286,948	(14,014)	94,463	13,552	273,832	224,354	182,841	32,247	39,346	116,336
Other	40,094	26,540	43,107	43,457	70,595	73,770	51,018	16,496	20,093	61,149
Total	397,314	73,665	220,247	108,163	394,427	343,269	272,796	92,062	82,563	201,648



MATERIAL COST TRENDS

BASE YEAR: 2004

	ASPHALT PATCH		SALT		PEASTONE		ASPHALT EMULSION		DIESEL		MTF REVENUE	
	\$/TON	% CHANGE	\$/TON	% CHANGE	\$/TON	% CHANGE	\$/GAL	% CHANGE	\$/GAL	% CHANGE	\$	% CHANGE
2004	57.29	0.0%	27.23	0.0%	8.18	0.0%	0.65	0.0%	1.20	0.0%	8,435,997	0.0%
2005	56.89	-0.7%	27.20	-0.1%	8.63	5.5%	0.80	23.1%	1.73	44.2%	7,740,851	-8.2%
2006	60.32	5.3%	27.39	0.6%	8.66	5.9%	1.11	70.8%	2.24	86.7%	7,858,406	-6.8%
2007	65.21	13.8%	29.31	7.6%	8.36	2.2%	1.37	110.8%	2.23	85.8%	7,742,677	-8.2%
2008	73.28	27.9%	33.20	21.9%	8.28	1.2%	1.69	160.0%	3.26	171.7%	7,406,648	-12.2%
2009	82.51	44.0%	48.29	77.3%	8.21	0.4%	1.68	158.5%	1.94	61.7%	7,128,770	-15.5%
2010	79.84	39.4%	50.62	85.9%	8.15	-0.4%	1.92	195.4%	2.40	100.0%	7,448,713	-11.7%
2011	89.90	56.9%	50.52	85.5%	9.03	10.4%	1.92	195.4%	3.09	157.5%	7,475,999	-11.4%
2012	89.90	56.9%	54.40	99.8%	9.50	16.1%	2.18	235.4%	3.09	157.5%	7,545,228	-10.6%



SUMMARY OF PERMIT DEPARTMENT OPERATIONS

<u>Permit Type</u>	<u>Number Issued</u>	<u>Amount Collected</u>
Annual Permits/Cab Cards	240	
Single Move Permits	261	
Driveway Permits	129	
Utility Permits	85	
Building Move Permits	-	
Tap In Permits	-	
Road Bore	35	
		<u>\$ 52,420</u>
Highway Permits/Bituminous Road Cuts	20	\$ 8,000
MISS DIG Services	3,224	\$ 1,023
(calls forwarded to other agencies)	523	
Accident/Sign Damages Recovered		\$ 1,502
Highway Permits/Miscellaneous (no charge)	40	
Total Permit Fees Collected		<u>\$ 62,945</u>

2011-2012 CAPITAL OUTLAY

EQUIPMENT AND BUILDING PURCHASES

Road Equipment

4 Monroe Wing Plows	\$ 54,784
2 Henderson Boxes w/ Spreaders	15,280
1 Stihl Chainsaw	710
1 Red Lion Trash Pump	460
2 Stihl Pole Saws	1,300
3 Rebuilt Transmissions/Engines - various vehicles	6,171
16 Cell Phones	<u>1,196</u>
Total Road Equipment	<u>\$ 79,901</u>

Shop Equipment

Plasma Cutter	\$ 2,411
Welder	<u>3,962</u>
Total Shop Equipment	<u>\$ 6,373</u>

Total 2011-2012 Capital Outlay Expense **\$ 86,274**

STATUS OF ROAD MILEAGE JANUARY 1, 2013

TOWNSHIP	PRIMARY ROADS		TOTAL MILES PRIMARY	LOCAL ROADS		PLATTED STREETS		TOTAL MILES LOCAL	TOTAL MILES IN TWP	TOTAL MILES PAVED	TOTAL PERCENT PAVED	TOTAL MILES GRAVEL
	PAVED	GRAVEL		PAVED	GRAVEL	PAVED	GRAVEL					
Bellevue	18.40	-	18.40	3.66	44.78	0.23	-	48.67	67.07	22.29	33.23%	44.78
Benton	28.13	-	28.13	7.02	26.60	-	-	33.62	61.75	35.15	56.92%	26.60
Brookfield	18.41	-	18.41	9.19	44.83	-	-	54.02	72.43	27.60	38.11%	44.83
Carmel	23.36	-	23.36	8.26	33.66	0.33	-	42.25	65.61	31.95	48.70%	33.66
Chester	13.70	-	13.70	4.52	43.97	-	0.13	48.62	62.32	18.22	29.24%	44.10
Delta	55.85	-	55.85	8.98	7.37	94.14	0.64	111.13	166.98	158.97	95.20%	8.01
Eaton	25.99	-	25.99	19.28	18.61	4.28	-	42.17	68.16	49.55	72.70%	18.61
Eaton Rapids	24.09	-	24.09	7.59	35.70	-	-	43.29	67.38	31.68	47.02%	35.70
Hamlin	26.47	-	26.47	13.06	31.66	-	0.10	44.82	71.29	39.53	55.45%	31.76
Kalamo	18.30	-	18.30	8.26	39.10	0.26	-	47.62	65.92	26.82	40.69%	39.10
Oneida	23.51	-	23.51	16.19	14.55	9.47	0.19	40.40	63.91	49.17	76.94%	14.74
Roxand	20.72	-	20.72	10.07	34.52	-	-	44.59	65.31	30.79	47.14%	34.52
Sunfield	22.80	-	22.80	12.95	23.74	0.72	-	37.41	60.21	36.47	60.57%	23.74
Vermontville	17.51	-	17.51	3.56	38.57	-	-	42.13	59.64	21.07	35.33%	38.57
Walton	23.00	-	23.00	12.29	35.42	-	-	47.71	70.71	35.29	49.91%	35.42
Windsor	31.54	-	31.54	16.35	25.80	10.60	0.30	53.05	84.59	58.49	69.15%	26.10
TOTAL	391.78	-	391.78	161.23	498.88	120.03	1.36	781.50	1,173.28	673.04	57.36%	500.24

EATON COUNTY, MICHIGAN

2012 PROJECTS

- SINGLE SEAL
- SKIN PATCH & SEAL
- REGRAVEL
- NEW CONSTRUCTION
- SLURRY SEAL

- SIGNAL
- BRIDGE AND CULVERT

