



2012-2013

**SUPPLEMENTAL ANNUAL REPORT**

EATON COUNTY ROAD COMMISSION

1112 Reynolds Road | Charlotte, MI 48813 | 517-543-1630  
[www.eatoncountyrad.com](http://www.eatoncountyrad.com)





**2012-2013**

**SUPPLEMENTAL ANNUAL REPORT**

---

**OCTOBER 1, 2012 – SEPTEMBER 30, 2013**

**DARRELL R. TENNIS, CHAIRMAN**

*Term expires 12-31-2013*

**TIMOTHY L. LAMOREAUX, VICE CHAIRMAN**

*Term expires 12-31-2016*

**BENJAMIN S. LYONS, MEMBER**

*Term expires 12-31-2014*

**BLAIR E. BALLOU, P.E., ENGINEER-MANAGER**

**LORI N. FRIEDLIS, CPA, FINANCE DIRECTOR**



# TABLE OF CONTENTS

---

Introduction	7
Organizational Chart	11
Financial Summary	13
Illustration of Revenues and Expenses	15
Illustration of Overall Primary and Local Road and Bridge Expenditures	17
Illustration of Primary Road and Bridge Expenditures	18
Illustration of Local Road and Bridge Expenditures	19
Summary of 2012-2013 Road Improvement Projects	21
Tabulation by Township of 2012-2013 Road Improvement Projects	23
Primary Maintenance Cost Summary by Township	42
Local Maintenance Cost Summary by Township	43
Ten Year History of MTF Revenue, Township Contributions and County Board Appropriations	44
Five Year Township Contributions by Dollar and Per Capita	45
Primary Road Fund Transfers to Local Road Fund 2004-2013	47
Ten Year History of Road Resurfacing	48
History of Annual Pothole Patching Costs	49
Material Cost Trends	50
Paving Cost Trends	51
History of Annual Insurance Costs	53
Summary of Permit Department Operations	54
Capital Outlay Detail	55
Status of Road Mileage at January 1, 2014	56
Deficient Bridges	57



# INTRODUCTION

---

The Eaton County Road Commission was established in 1912 by resolution of the County Board of Supervisors and charged by law with the duty “to keep in reasonable repair, so that they shall be reasonably safe and convenient for public travel, all county roads, bridges, and culverts that are under their care and control, and which are open to public travel.” State law also requires the Road Commission to permit and regulate certain activities in road right-of-way, authorizes the Road Commission to set reasonable standards for adopting new roads into the county system and to enforce state restrictions on vehicle size and weight on county roads.

Over the past 102 years, the Eaton County road system has grown to include 391 miles that are now designated as Primary roads. Passage of the McNitt Act in 1931 abolished



the old township road system and transferred over 650 miles of township roads to the Road Commission. These old township roads, together with over 120 miles of subdivision streets built since that time, make up what is now the 781 mile system of County Local roads. Overall, 57%, or 673 miles, of all Eaton County roads are paved, with

the remaining 500 miles being gravel surfaced but otherwise unimproved.

Routine maintenance by Road Commission workers is organized into four service areas. Crews working in the southeast and southwest areas of the County operate out of the

main garage in Charlotte. The northwest quarter of the County is served by the crew based in Vermontville, and the northeast area covered by workers from our garage in Delta Township.

While the Road Commission continues to use its own forces for emergency and minor repairs, and most of the routine maintenance of snow removal, gravel blading and seal coating, all construction and most other heavy maintenance work is performed by private contractors selected through



Falling Weight Deflectometer (FWD) testing performed by Soils & Materials Engineers, Inc. on Marshall Road, Walton Township

competitive bids. Many other routine maintenance operations that require specialized equipment such as mowing, pavement markings and street sweeping are also provided by private firms. The dollar amount contracted with private companies in fiscal year 2012-2013 equaled 39% of the total expenditures for road maintenance and construction.



St. Joe Hwy & Broadbent Road, Delta Township

On Primary roads in 2013 the Road Commission completed a project to reconstruct and widen St. Joe Highway from Marketplace Boulevard to Broadbent Road, including a center left turn lane, bicycle lanes, and a traffic signal at the Broadbent intersection. A combination of

federal CMAQ and USTP grant funds were used to fund 80% of the \$838,347 construction cost of the project, with Delta Charter Township providing the 20% local matching funds.

Primary road resurfacing in 2013 included 57 miles of sealcoating and 3.64 miles of asphalt overlay using Road Commission MTF funds, and one mile of asphalt resurfacing using a \$503,400 federal USTP grant on Elmwood Road from Saginaw Highway to Willow Highway.



Asphalt Overlay on Packard Hwy  
Eaton Twp

On Local roads in 2013, in cooperation with township governments, the Road Commission resurfaced 2.42 miles of paved roads using hot mix asphalt and 5.30 miles using sealcoat. An additional 12 miles of unimproved local roads were resurfaced with gravel with the costs on each mile shared equally between the Township and the Road Commission.

No local bridges were replaced in 2013, however, the structure carrying Wilson Road over the Spring Brook in Hamlin Township was replaced with a large box culvert and the road opened to traffic between Bellevue Highway and Spicerville Highway in Hamlin Township. The Road Commission and Hamlin Township each shared 50% of the total \$107,557 cost of the project.



Wilson Road Culvert, Hamlin Township

While the Road Commission’s first priority is public safety on all county roads, we continue to work towards keeping the existing good roads in Eaton County in good condition, rather than deferring needed maintenance in order to pay for the construction of new paved roads.

Recognizing the need for long range planning for improvements on the county road system, the Road Commission participates in the Tri-County Regional Planning Commission planning process, and actively competes for Federal and State grant funds and other local government funds for specific improvement projects whenever possible.

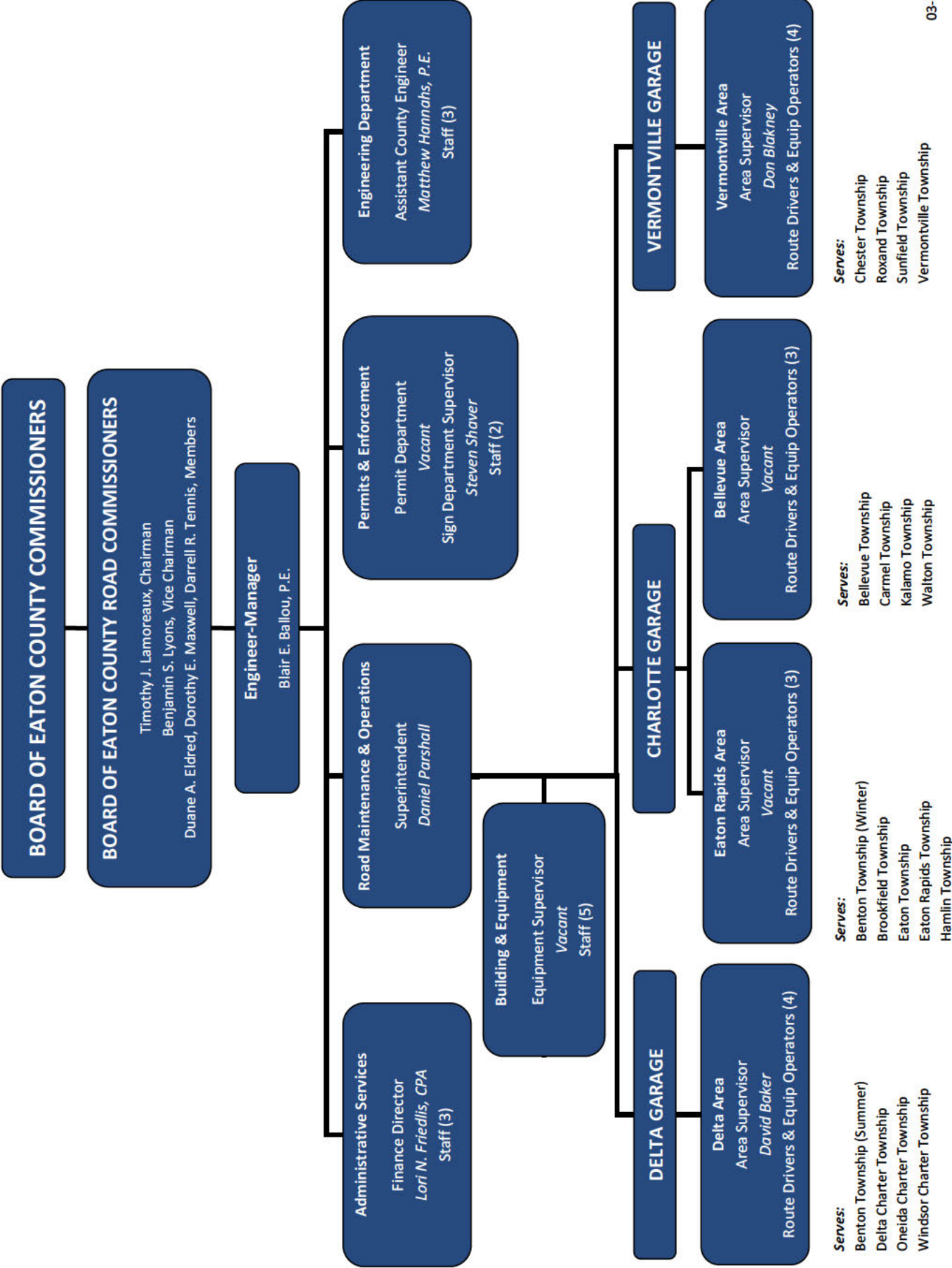
The Road Commission welcomes comments, suggestions and discussion on both programs and specific projects at any time.



Crack Seal on Willow Hwy, Delta Twp



Soil Borings on Five Point Hwy, Carmel Twp



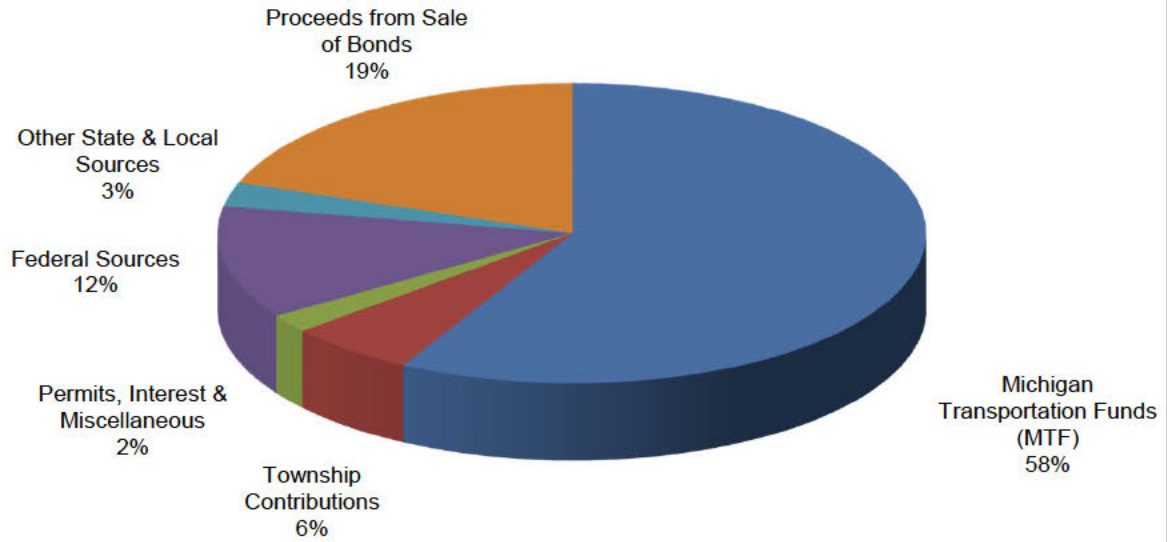


# FINANCIAL SUMMARY

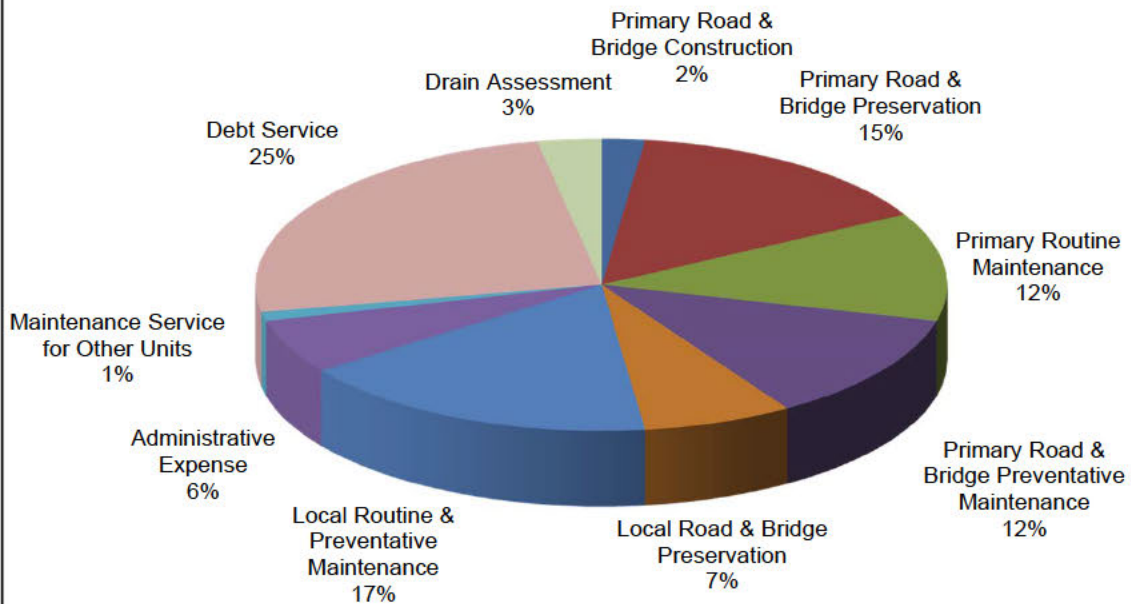
	2009-2010	2010-2011	2011-2012	2012-2013	2013-2014
	ACTUAL	ACTUAL	ACTUAL	ACTUAL	BUDGET
<b>REVENUES</b>					
Permit Revenue	\$ 54,985	\$ 62,100	\$ 60,420	\$ 77,540	\$ 70,000
Intergovernmental:					
Federal Sources	1,719,023	1,800,509	2,660,381	1,614,966	3,442,341
Michigan Transportation Funds	7,448,713	7,475,999	7,545,228	7,695,041	7,675,000
Other State Sources	1,598,131	77,382	259,732	328,866	405,600
Township Contributions	697,087	42,128	902,228	773,359	635,028
Other Local Sources	36,912	378,851	20,441	18,997	70,350
Charges for Services	-	-	-	-	-
Interest and Rentals	187	334	379	728	9,049
Other Revenue	186,975	107,067	52,442	184,348	112,259
Proceeds from Sale of Bonds	-	-	-	2,595,000	-
<b>Total Revenues</b>	<b>\$ 11,742,013</b>	<b>\$ 9,944,370</b>	<b>\$ 11,501,251</b>	<b>\$ 13,288,845</b>	<b>\$ 12,419,627</b>
<b>EXPENDITURES</b>					
Primary Roads and Bridges:					
Construction/Capacity Improvements	\$ 653,051	\$ 1,169,844	\$ 3,235,177	\$ 353,283	\$ 3,500
Preservation/Structural Improvements	3,197,949	313,265	152,936	1,873,205	4,873,736
Routine Maintenance	1,702,607	1,599,460	1,428,346	1,496,039	2,157,500
Preventative Maintenance	1,570,348	1,195,113	1,641,929	1,617,157	1,500,000
Local Roads and Bridges:					
Construction/Capacity Improvements	-	-	-	-	-
Preservation/Structural Improvements	53,331	109,397	883,973	972,042	1,004,000
Routine Maintenance	1,865,643	2,041,312	1,948,701	2,002,286	2,400,000
Preventative Maintenance	5,825	107,969	104,431	132,862	30,000
Equipment Expense (net)	194,497	64,180	(221,937)	(312,783)	-
Administration (net)	877,263	919,143	807,855	796,698	850,000
Maintenance Service for Other Units	260,323	193,139	226,566	197,481	250,000
Non-Road Projects	-	-	-	1,716	325,833
Capital Outlay (net)	(235,866)	(211,060)	(203,257)	(186,888)	627,600
Debt Service	660,013	644,900	628,650	3,170,166	571,400
Drain Assessment	-	344,378	186,554	376,007	400,000
<b>Total Expenditures</b>	<b>\$ 10,804,984</b>	<b>\$ 8,491,040</b>	<b>\$ 10,819,924</b>	<b>\$ 12,489,271</b>	<b>\$ 14,993,569</b>
Net Revenues (Expenditures)	937,029	1,453,330	681,327	799,574	(2,573,942)
Fund Balance at Beginning of Year	1,897,434	2,834,463	4,287,793	4,969,120	5,768,694
<b>Fund Balance at End of Year</b>	<b>\$ 2,834,463</b>	<b>\$ 4,287,793</b>	<b>\$ 4,969,120</b>	<b>\$ 5,768,694</b>	<b>\$ 3,194,752</b>



## REVENUE

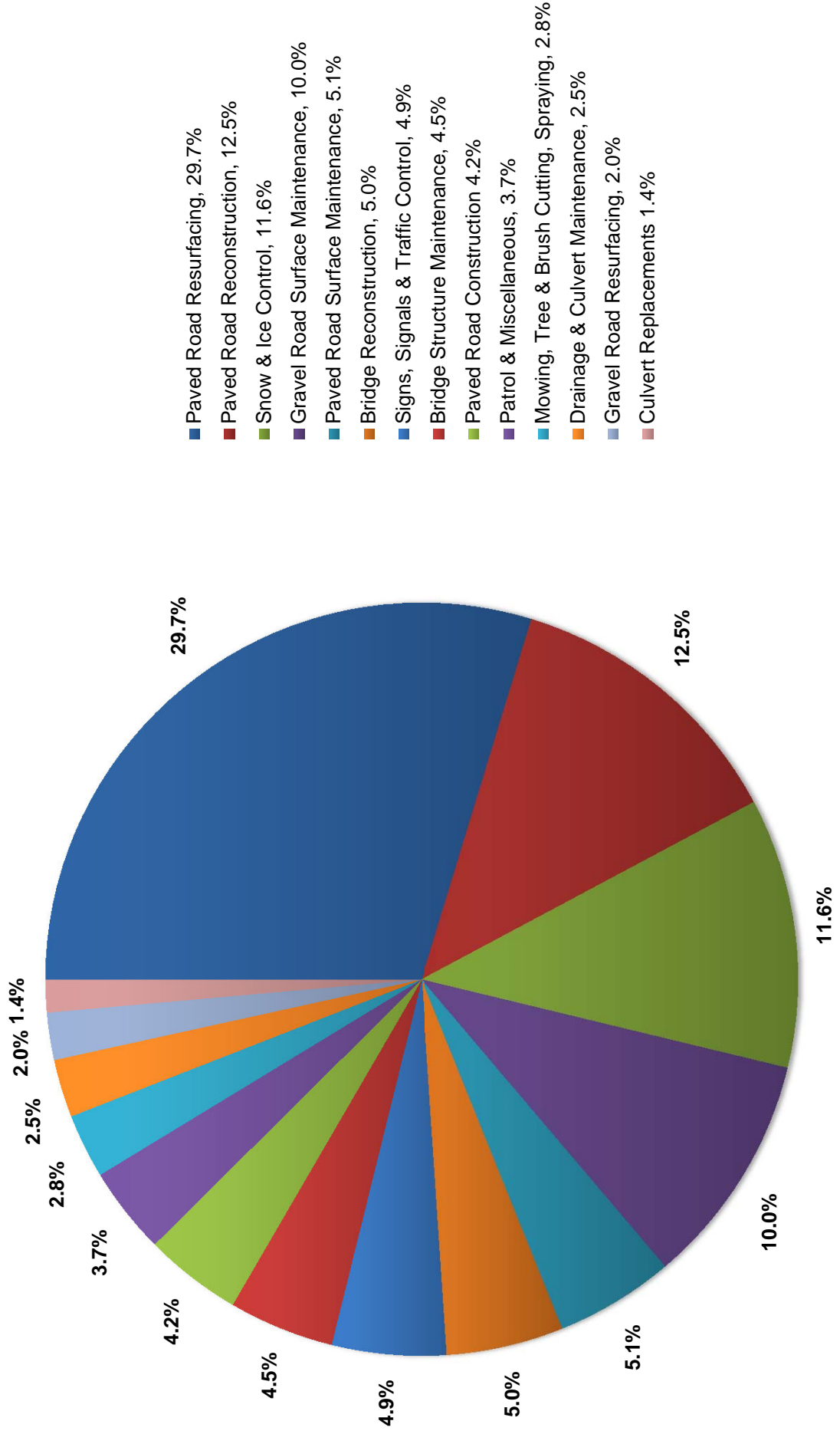


## EXPENDITURES

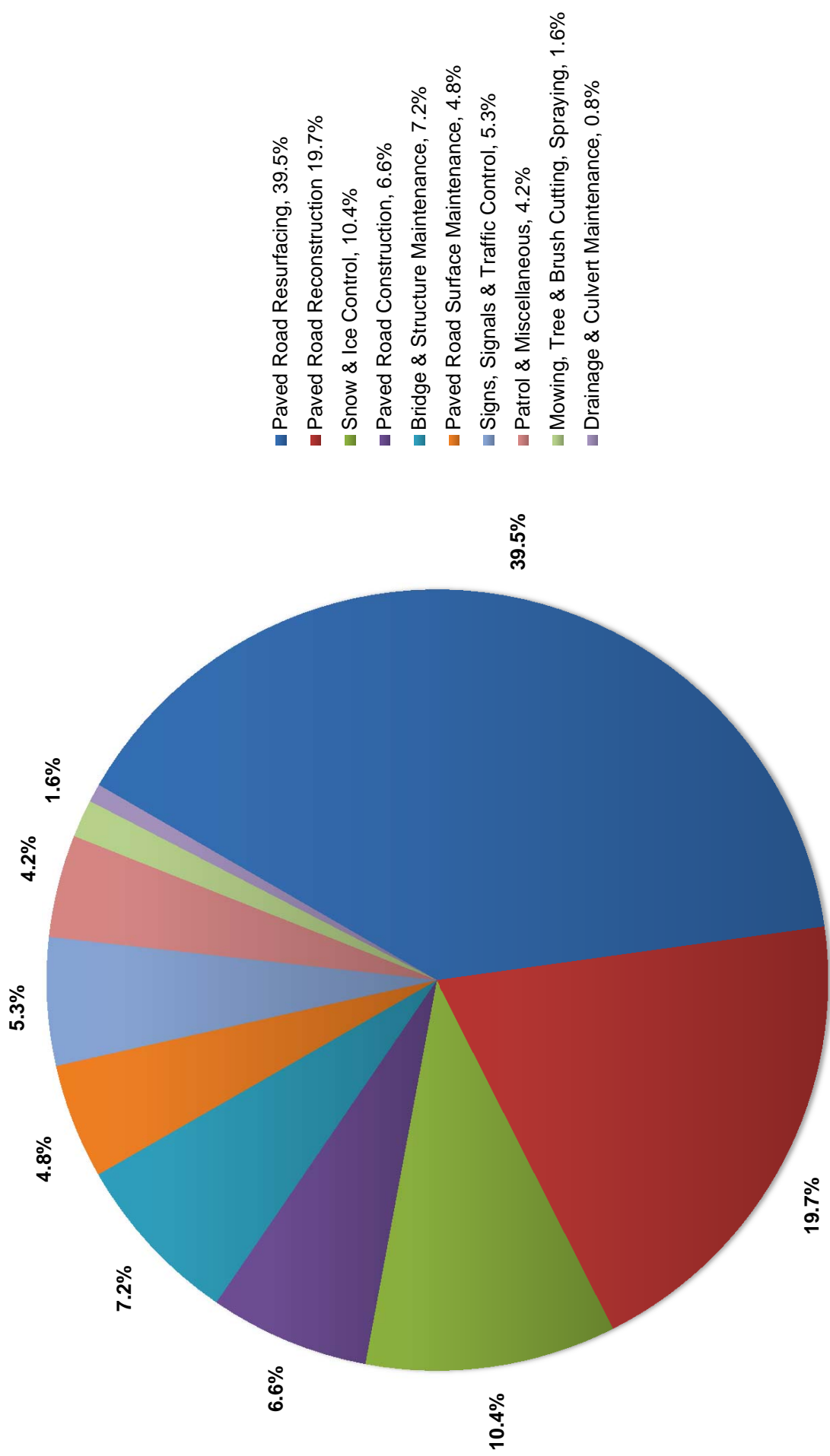




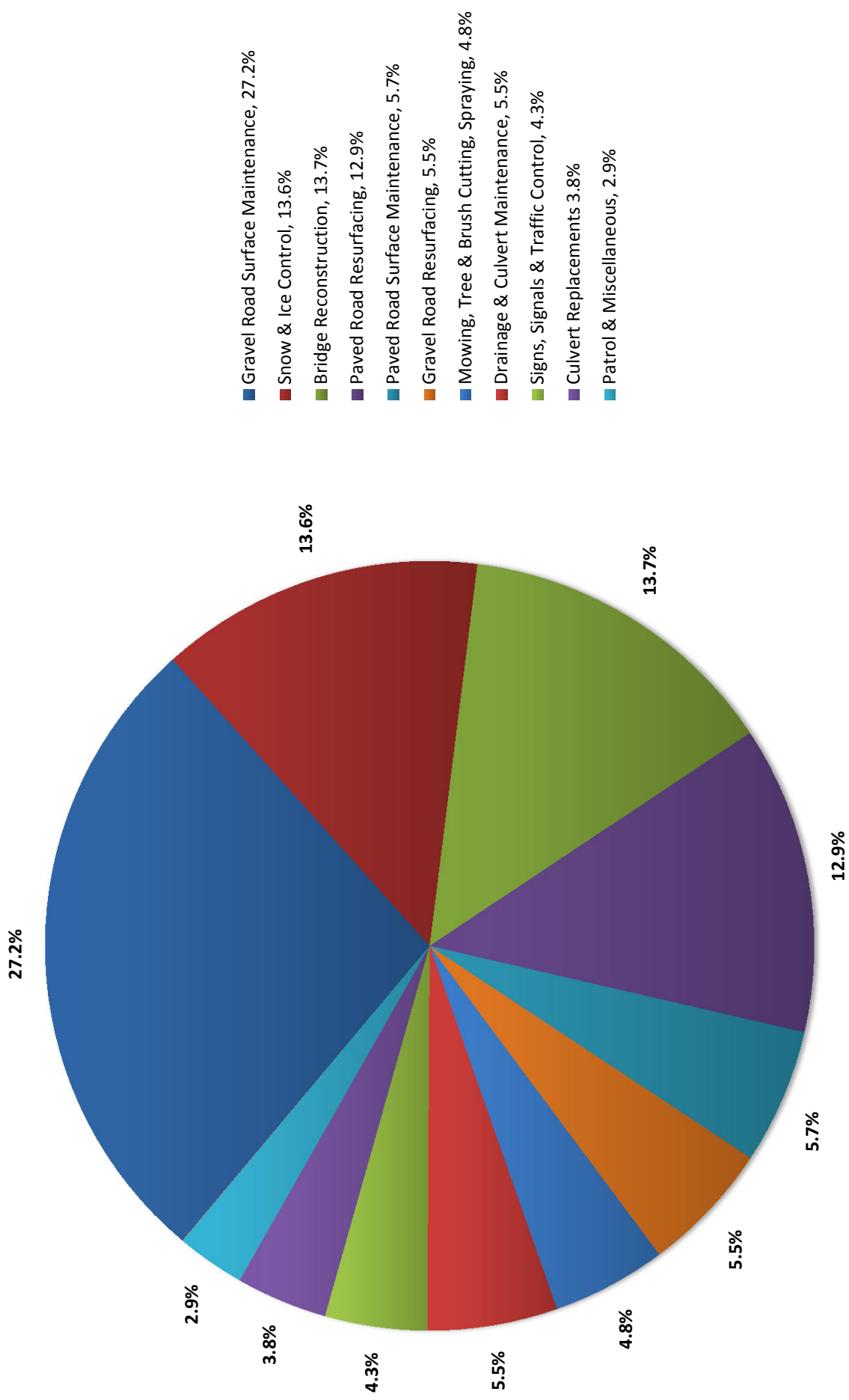
# OVERALL PRIMARY AND LOCAL ROAD AND BRIDGE EXPENDITURES



# PRIMARY ROAD AND BRIDGE EXPENDITURES



# LOCAL ROAD AND BRIDGE EXPENDITURES





# 2012-2013

## PRIMARY AND LOCAL ROAD IMPROVEMENTS

---

### SUMMARY

#### Primary Roads:

Total Construction/Capacity Improvement Projects	\$ 353,283
Total Preservation/Structural Improvement Projects	\$ 1,873,205
Total Preventative Maintenance Projects	<u>\$ 1,616,965</u>
<b>Total Primary Road and Bridge Projects</b>	<b><u><u>\$ 3,843,453</u></u></b>

#### Local Roads:

Total Construction/Capacity Improvement Projects	\$ -
Total Preservation/Structural Improvement Projects	\$ 972,042
Total Preventative Maintenance Projects	<u>\$ 132,862</u>
<b>Total Local Road and Bridge Projects</b>	<b><u><u>\$ 1,104,904</u></u></b>

**Grand Total** **\$ 4,948,357**



# 2012-2013

## PRIMARY AND LOCAL ROAD IMPROVEMENTS

---

### BELLEVUE TOWNSHIP

#### Primary Roads:

Assyria Hwy, Curtis to Pease <i>2012 Sealcoat</i>	2.00 mi	\$	836
Greenfield Hwy, M-78 to Bellevue village limit <i>2013 Sealcoat</i>	0.80 mi	\$	19,094
Ionia Rd, M-78 to Baseline <i>2013 Sealcoat</i>	1.01 mi	\$	22,738
Pease Rd, Assyria to M-78 <i>2012 Sealcoat</i>	1.50 mi	\$	439
Sand Rd, M-78 to county line <i>2013 Sealcoat</i>	1.67 mi	\$	34,523

#### Local Roads:

Babcock Rd, Baseline to M-78 <i>2012 Regravel</i>	0.76 mi	\$	11,040
Curtis Rd, Assyria to Cox <i>2012 Regravel</i>	1.01 mi	\$	14,704
Follett Hwy, Hill to Pease <i>2012 Regravel</i>	0.98 mi	\$	14,672
Stoney Point Hwy structure, east of Curtis Rd <i>2012 Culvert Replacement</i>		\$	13,092

**Bellevue Township Total** \$ 131,138

**Bellevue Township Contributions** \$ 29,567

# 2012-2013

## PRIMARY AND LOCAL ROAD IMPROVEMENTS

---

### BENTON TOWNSHIP

Primary Roads:

Cochran Rd, M-50 to Pinch <i>2012 Sealcoat</i>	3.37 mi	\$	446
Otto Rd, Needmore to Doane <i>2013 Sealcoat</i>	0.50 mi	\$	9,604
Vermontville Hwy, Benton to Potterville city limit <i>2013 Sealcoat</i>	3.20 mi	\$	77,283
Windsor Hwy, M-100 to Royston <i>2013 Sealcoat</i>	1.00 mi	\$	27,070

Local Roads:

<b>Benton Township Total</b>	\$	114,403
<b>Benton Township Contributions</b>	\$	-

# 2012-2013

## PRIMARY AND LOCAL ROAD IMPROVEMENTS

---

### BROOKFIELD TOWNSHIP

Primary Roads:

Bellevue Hwy, Cochran to Brookfield <i>2012 Sealcoat</i>	2.00 mi	\$	403
Bellevue Hwy, Narrow Lake to Royston <i>2012 Sealcoat</i>	3.00 mi	\$	605
Cochran Rd, Baseline to Butterfield <i>2013 Sealcoat</i>	1.00 mi	\$	23,697
Narrow Lake Rd, Bellevue to Five Point <i>2013 Sealcoat</i>	4.00 mi	\$	80,861

Local Roads:

<b>Brookfield Township Total</b>	\$	105,566
<b>Brookfield Township Contributions</b>	\$	-

# 2012-2013

## PRIMARY AND LOCAL ROAD IMPROVEMENTS

---

### CARMEL TOWNSHIP

#### Primary Roads:

Five Point Hwy, Battle Creek to Cochran <i>2012 Sealcoat</i>	3.60 mi	\$	891
Five Point Hwy, Maurer to Matthews <i>Soils Study</i>		\$	9,327

#### Local Roads:

Maurer Rd, Five Point to Battle Creek <i>2012 Regravel</i>	2.02 mi	\$	29,576
Carlisle Hwy, Stine to Chester <i>2012 Regravel</i>	1.02 mi	\$	13,089
Broadway Hwy, Maurer east to end of pavement <i>2012 Regravel</i>	0.83 mi	\$	12,171

**Carmel Township Total** \$ 65,054

**Carmel Township Contributions** \$ 71,642

# 2012-2013

## PRIMARY AND LOCAL ROAD IMPROVEMENTS

---

### CHESTER TOWNSHIP

Primary Roads:

Mulliken Rd, M-50 to Needmore <i>2012 Sealcoat</i>	2.50 mi	\$	434
Vermontville Hwy, Ainger to Mulliken <i>2012 Sealcoat</i>	2.00 mi	\$	1,572

Local Roads:

Bolock Hwy, Hubbard to Wheaton <i>2012 Regravel</i>	1.52 mi	\$	22,043
Lamie Hwy, Hubbard to Stine <i>2012 Regravel</i>	0.51 mi	\$	7,961

**Chester Township Total** \$ 32,010

**Chester Township Contributions** \$ 15,535

# 2012-2013

## PRIMARY AND LOCAL ROAD IMPROVEMENTS

---

### DELTA TOWNSHIP



#### Primary Roads:

Creyts Rd, I-496 to Saginaw <i>2010 ARRA Asphalt Mill &amp; Overlay</i>	1.47 mi	\$	109
Creyts Rd, from M-43 north <i>2010 ARRA Asphalt Mill &amp; Overlay</i>	0.45 mi	\$	77
Creyts Rd, M-43 to Old River Trail <i>2009 Non-Motorized Path</i>		\$	78
Delta Center Elementary SRTS, St. Joe, Canal and Williamsburg - Non-Motorized <i>2010 Safe Routes to Schools</i>		\$	659
Delta River Dr, Waverly to Webster <i>2013 Thin Overlay</i>	2.48 mi	\$	157
Elmwood Rd, Saginaw to Willow <i>2013 Resurface</i>	1.00 mi	\$	700,799
Ingersoll Rd, Delta River to Eaton <i>2013 Thin Overlay</i>	0.36 mi	\$	78
Michigan Ave, Canal to Creyts <i>2012 New Road on New Location</i>	1.01 mi	\$	343,955
Mt. Hope Hwy, Royston to Nixon <i>2013 Sealcoat</i>	1.00 mi	\$	20,484
St. Joe Hwy, Broadbent to Marketplace <i>2013 Add turn lanes, bicycle lanes, sidewalk &amp; signalize intersection</i>	0.60 mi	\$	1,007,143
St. Joe Hwy, Creyts to Waverly <i>2012 Slurry Seal</i>	2.00 mi	\$	5,447
Willow Hwy, township line to Canal <i>2013 Thin Overlay</i>	2.87 mi	\$	37,148

# 2012-2013

## PRIMARY AND LOCAL ROAD IMPROVEMENTS

---

### DELTA TOWNSHIP CONTINUED

#### Local Roads:

Cobblestone, Stoney Brook to Stoney Brook <i>2012 Asphalt Overlay</i>	0.36 mi	\$	41,808
Dawnhaven, Madonna to M-43 <i>2012 Asphalt Overlay</i>	0.25 mi	\$	23,830
Rickle, Canal to Ena <i>2012 Asphalt Overlay</i>	0.27 mi	\$	35,056
Meade, St. Joe to Pickett <i>2012 Asphalt Overlay</i>	0.07 mi	\$	6,842
Cherbourg, St. Joe to Monteviedo <i>2012 Asphalt Overlay</i>	0.08 mi	\$	10,987
Arlington, St. Joe to Bennington <i>2012 Asphalt Overlay</i>	0.10 mi	\$	15,416
Northlane, Westhill to end <i>2012 Asphalt Overlay</i>	0.14 mi	\$	15,524
Westhill, Snow to end <i>2012 Asphalt Overlay</i>	0.26 mi	\$	33,808
Burtraw, Old Lansing to Westhill <i>2012 Asphalt Overlay</i>	0.06 mi	\$	6,655
Guenther, Mt. Hope to end <i>2012 Asphalt Overlay</i>	0.37 mi	\$	36,082
Standard Dr, Belgian to Waverly <i>2012 Asphalt Overlay</i>	0.13 mi	\$	13,165
Belgian Way, Preakness to end <i>2012 Asphalt Overlay</i>	0.33 mi	\$	16,578
<b>Delta Township Total</b>		\$	<b>2,371,885</b>
<b>Delta Township Contributions</b>		\$	<b>424,634</b>

# 2012-2013

## PRIMARY AND LOCAL ROAD IMPROVEMENTS

---

### EATON TOWNSHIP



Primary Roads:

Cochran Rd, Five Point to I-69 <i>2014 Joint Repair &amp; Asphalt Overlay</i>	0.23 mi	\$	1,575
Otto Rd, Packard to Kinsel <i>2013 Sealcoat</i>	1.00 mi	\$	25,885
Packard Hwy, Otto to Stewart <i>2013 Sealcoat</i>	1.50 mi	\$	33,313

# 2012-2013

## PRIMARY AND LOCAL ROAD IMPROVEMENTS

---

### EATON TOWNSHIP CONTINUED

#### Local Roads:

Bell Hwy, Perkey to Ackley <i>2013 Sealcoat</i>	1.26 mi	\$	17,859
Broadway Hwy, Brookfield to Tubbs <i>2012 Sealcoat</i>	1.35 mi	\$	452
Brookfield Rd Bridge, over the Battle Creek <i>2015 Bridge Replacement</i>		\$	2,152
Fairview Hwy, Otto to end of pavement <i>2012 Sealcoat</i>	0.36 mi	\$	248
Gidner Rd, Packard to Kinsel <i>2013 Sealcoat</i>	1.02 mi	\$	16,170
Kalamo Hwy Bridge, between Brookfield and Tubbs <i>2012 Bridge Replacement</i>		\$	420,751
Perkey Rd, Long to M-50 <i>2013 Sealcoat</i>	0.95 mi	\$	15,060
Perkey Rd, M-50 to Island <i>2013 Skin Patch &amp; Seal</i>	1.06 mi	\$	64,528
Sherman Rd, Five Point to Broadway <i>2012 Sealcoat</i>	1.01 mi	\$	287
Stewart Rd, Mills to Long <i>2013 Sealcoat</i>	1.01 mi	\$	17,384
Tubbs Rd, Broadway to Kalamo <i>2012 Sealcoat</i>	1.09 mi	\$	508
<b>Eaton Township Total</b>		\$	<b>616,172</b>
<b>Eaton Township Contributions</b>		\$	<b>140,054</b>

# 2012-2013

## PRIMARY AND LOCAL ROAD IMPROVEMENTS

---

### EATON RAPIDS TOWNSHIP

#### Primary Roads:

Canal Rd, Bentley to Eaton Rapids city limit <i>2013 Sealcoat</i>	1.75 mi	\$	39,339
Island Hwy, Canfield to Canal <i>2012 Sealcoat</i>	2.00 mi	\$	1,346
Five Point Hwy, Whittum to Eaton Rapids city limit <i>2012 Sealcoat</i>	0.50 mi	\$	197
Plains Hwy, Waverly to Eaton Rapids city limit <i>2013 Sealcoat</i>	1.86 mi	\$	43,342
Royston Rd, M-50 to Island <i>2012 Sealcoat</i>	2.50 mi	\$	7,718
Waverly Rd, Columbia to Toles <i>2013 Sealcoat</i>	3.00 mi	\$	56,024

# 2012-2013

## PRIMARY AND LOCAL ROAD IMPROVEMENTS

---

### EATON RAPIDS TOWNSHIP CONTINUED

Local Roads:

Bunker, M-99 to Smith <i>2012 Regravel</i>	0.89 mi	\$	12,199
Canfield Rd, Bell to Island <i>2012 Regravel</i>	1.00 mi	\$	14,541
Kemler Rd, end of pavement to Petrieville <i>2012 Regravel</i>	0.79 mi	\$	11,891
Petrieville Hwy, Canal to Kemler <i>2012 Regravel</i>	0.59 mi	\$	7,687
Kemler Rd, M-50 north to end of pavement <i>2012 Sealcoat</i>	0.61 mi	\$	209

**Eaton Rapids Township Total** \$ 194,493

**Eaton Rapids Township Contributions** \$ 73,361

# 2012-2013

## PRIMARY AND LOCAL ROAD IMPROVEMENTS

---

### HAMLIN TOWNSHIP

Primary Roads:

Five Point Hwy, Freeman to Whittum <i>2012 Sealcoat</i>	0.75 mi	\$	309
Spicerville Hwy, Royston to M-99 <i>2012 Sealcoat</i>	3.10 mi	\$	1,123
Springport Rd, Spicerville to the county line <i>2012 Sealcoat</i>	5.25 mi	\$	1,677

Local Roads:

Houston Rd, Bellevue to Holmes <i>2012 Sealcoat</i>	1.00 mi	\$	156
Wilson Rd Structure, over the Peacock Extension Intercounty Drain <i>2013 Culvert Replacement</i>		\$	106,132

**Hamlin Township Total** \$ 109,397

**Hamlin Township Contributions** \$ 35,499

# 2012-2013

## PRIMARY AND LOCAL ROAD IMPROVEMENTS

---

### KALAMO TOWNSHIP

Primary Roads:

Ionia Rd, Five Point to M-79 <i>2013 Sealcoat</i>	4.00 mi	\$	73,806
--	---------	----	--------

Local Roads:

<b>Kalamo Township Total</b>		\$	73,806
<b>Kalamo Township Contributions</b>		\$	-

# 2012-2013

## PRIMARY AND LOCAL ROAD IMPROVEMENTS

---

### ONEIDA TOWNSHIP



Primary Roads:

Mt. Hope Hwy, Cochran to Oneida <i>2012 Sealcoat</i>	3.00 mi	\$	1,766
Mt. Hope Hwy, Oneida to Royston <i>2013 Sealcoat</i>	3.00 mi	\$	61,390
Needmore Hwy, Cochran to Otto <i>2013 Sealcoat</i>	2.00 mi	\$	41,079
St. Joe Hwy, Oneida to Royston <i>2013 Sealcoat</i>	3.00 mi	\$	69,876
Willow Hwy, city of Grand Ledge to township line <i>2013 Thin Overlay</i>	0.77 mi	\$	12,074

Local Roads:

<b>Oneida Township Total</b>		\$	186,185
<b>Oneida Township Contributions</b>		\$	-

# 2012-2013

## PRIMARY AND LOCAL ROAD IMPROVEMENTS

---

### ROXAND TOWNSHIP

Primary Roads:

Dow Rd, M-50 to Grace <i>2012 Sealcoat</i>	4.02 mi	\$	1,982
Mt. Hope Hwy, Dow to Cochran <i>2012 Sealcoat</i>	6.00 mi	\$	1,369
Needmore Hwy, Mulliken to Moyer <i>2013 Sealcoat</i>	0.52 mi	\$	14,164
Needmore Hwy, Moyer to Cochran <i>2013 Sealcoat</i>	2.50 mi	\$	49,099

Local Roads:

<b>Roxand Township Total</b>		\$	66,614
<b>Roxand Township Contributions</b>		\$	-

# 2012-2013

## PRIMARY AND LOCAL ROAD IMPROVEMENTS

---

### SUNFIELD TOWNSHIP



#### Primary Roads:

Dow Rd, Grace to M-43 <i>2012 Sealcoat</i>	0.67 mi	\$	420
Ionia Rd, Mt. Hope to M-43 <i>2013 Sealcoat</i>	3.00 mi	\$	64,529
Kelly Hwy, Hager to Brown <i>2012 Sealcoat</i>	4.12 mi	\$	1,972
Mt. Hope Hwy, M-50 to Dow <i>2012 Sealcoat</i>	1.50 mi	\$	647
Mt. Hope Hwy, M-50 to county line <i>2013 Sealcoat</i>	4.50 mi	\$	81,541

#### Local Roads:

St. Joe Hwy bridge over the Sebewa Creek <i>2015 Bridge Replacement</i>		\$	2,152
--	--	----	-------

**Sunfield Township Total** \$ 151,261

**Sunfield Township Contributions** \$ 9,244

2012-2013

PRIMARY AND LOCAL ROAD IMPROVEMENTS

---

VERMONTVILLE TOWNSHIP

Primary Roads:

Local Roads:

**Vermontville Township Total** \$ -

**Vermontville Township Contributions** \$ -

# 2012-2013

## PRIMARY AND LOCAL ROAD IMPROVEMENTS

---

### WALTON TOWNSHIP

Primary Roads:

Ainger Rd, I-69 to Olivet city limit <i>2013 Sealcoat</i>	0.57 mi	\$	24,715
Bellevue Hwy, Marshall to Cochran <i>2013 Sealcoat</i>	4.16 mi	\$	82,027
Marshall Rd, Nye to I-69 <i>2014 Joint Repair and Asphalt Overlay</i>	1.37 mi	\$	29,676

Local Roads:

<b>Walton Township Total</b>		\$	136,418
<b>Walton Township Contributions</b>		\$	12,276

# 2012-2013

## PRIMARY AND LOCAL ROAD IMPROVEMENTS

---

### WINDSOR TOWNSHIP



#### Primary Roads:

Billwood Hwy, Canal to Creyts <i>2013 Sealcoat</i>	1.07 mi	\$	26,641
Canal/Windsor Intersection <i>2014 Widen, Add Turn Lanes</i>		\$	47,117
Canal Rd, Bridge to Lansing <i>2014 Crush &amp; Shape, Asphalt Overlay</i>	2.00 mi	\$	36,514
Creyts Rd Bridge, between Billwood and Hart <i>2012 Preventative Maintenance Project</i>		\$	381,879
Holt Hwy, Dimondale city limit to Waverly <i>2013 Sealcoat</i>	2.03 mi	\$	44,304
Nixon Rd, Vermontville to Windsor <i>2013 Sealcoat</i>	1.62 mi	\$	30,213
Smith Rd, Vermontville to Dimondale village limit <i>2012 Sealcoat</i>	1.00 mi	\$	373
Vermontville Hwy, Canal to M-99 <i>2012 Sealcoat</i>	2.00 mi	\$	841
Windsor Hwy, Royston to Nixon <i>2013 Sealcoat</i>	1.00 mi	\$	25,630

#### Local Roads:

Windsor Glen Special Assessment District <i>2011 S.A.D.</i>	1.18 mi	\$	435
--	---------	----	-----

**Windsor Township Total** \$ 593,947

**Windsor Township Contributions** \$ -

# 2012-2013 PRIMARY ROUTINE MAINTENANCE

---

## SUMMARY BY TOWNSHIP

<u>TOWNSHIP</u>	<u>ROAD COMMISSION COST</u>	<u>MILES</u>	<u>AVERAGE COST PER MILE</u>
Bellevue	\$ 71,229	18.40	\$ 3,871
Benton	84,312	28.13	2,997
Brookfield	68,945	18.41	3,745
Carmel	70,442	23.36	3,015
Chester	53,574	13.70	3,911
Delta	374,484	55.85	6,705
Eaton	94,586	25.99	3,639
Eaton Rapids	71,990	24.09	2,988
Hamlin	93,843	26.47	3,545
Kalamo	65,882	18.30	3,600
Oneida	73,324	23.51	3,119
Roxand	64,155	20.72	3,096
Sunfield	64,487	22.80	2,828
Vermontville	61,853	17.51	3,532
Walton	72,420	23.00	3,149
Windsor	110,704	31.54	3,510
Total Primary Maintenance	<b>\$ 1,496,230</b>	<b>391.78</b>	<b>\$ 3,819</b>

# 2012-2013 LOCAL ROUTINE MAINTENANCE

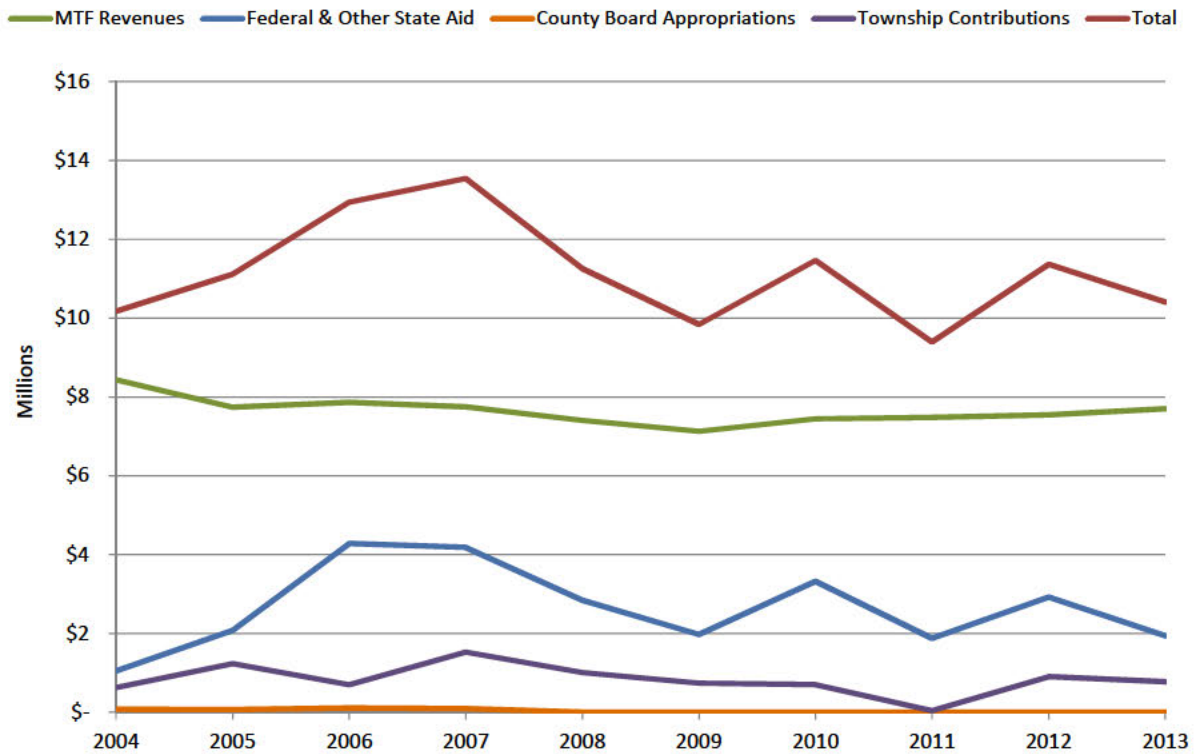
---

## SUMMARY BY TOWNSHIP

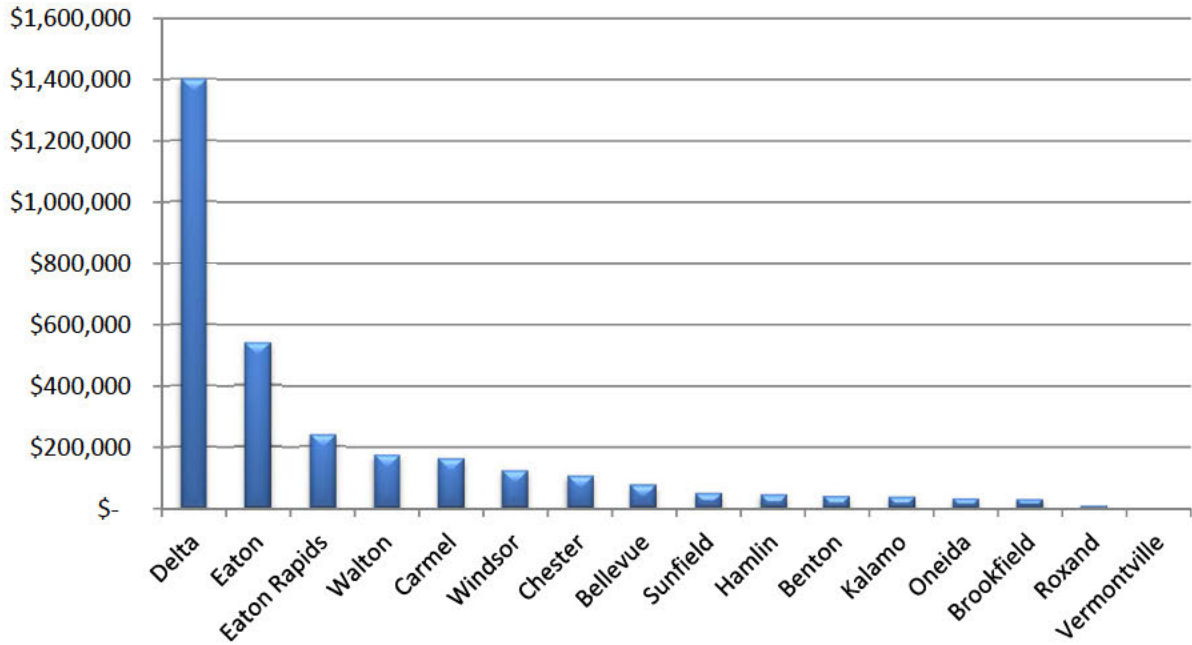
<b>TOWNSHIP</b>	<b>ROAD COMMISSION COST</b>	<b>MILES</b>	<b>AVERAGE COST PER MILE</b>
Bellevue	\$ 110,926	48.67	\$ 2,279
Benton	109,241	33.62	3,249
Brookfield	132,154	54.02	2,446
Carmel	129,661	42.25	3,069
Chester	115,582	48.62	2,377
Delta	240,531	111.13	2,164
Eaton	106,411	42.17	2,523
Eaton Rapids	136,465	43.29	3,152
Hamlin	108,268	44.82	2,416
Kalamo	124,767	47.62	2,620
Oneida	108,128	40.40	2,676
Roxand	104,409	44.59	2,342
Sunfield	87,221	37.41	2,331
Vermontville	147,130	42.13	3,492
Walton	102,696	47.71	2,153
Windsor	136,885	53.05	2,580
<b>Total Local Maintenance</b>	<b>\$ 2,000,475</b>	<b>781.50</b>	<b>\$ 2,560</b>

# TEN YEAR HISTORY MTF REVENUE, TOWNSHIP CONTRIBUTIONS AND COUNTY BOARD APPROPRIATIONS

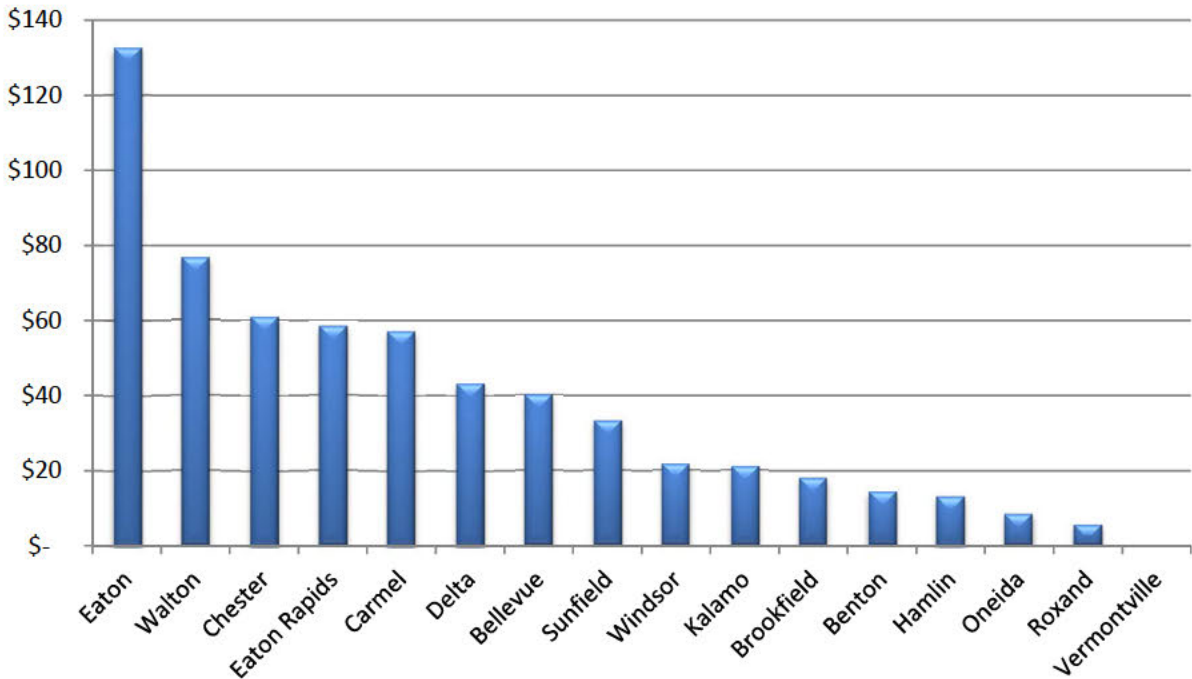
YEAR	EATON COUNTY SHARE OF MTF	FEDERAL & OTHER STATE AID	COUNTY BOARD APPROP.	TOWNSHIP CONTR.	TOTAL	TOWNSHIP CONTR. AS % OF MTF
2004	8,435,997	1,043,383	69,850	623,287	10,172,517	7.4%
2005	7,740,851	2,077,221	64,792	1,234,861	11,117,725	16.0%
2006	7,858,406	4,276,380	107,344	696,861	12,938,991	8.9%
2007	7,742,677	4,183,260	85,957	1,528,846	13,540,740	19.7%
2008	7,406,648	2,841,462	-	1,006,718	11,254,828	13.6%
2009	7,128,770	1,972,174	-	737,984	9,838,928	10.4%
2010	7,448,713	3,317,154	-	697,087	11,462,954	9.4%
2011	7,475,999	1,877,891	-	42,128	9,396,018	0.6%
2012	7,545,228	2,920,113	-	902,228	11,367,569	12.0%
2013	7,695,041	1,943,833	-	773,359	10,412,233	10.1%



### Five Year Township Contributions by Dollar Primary and Local Roads

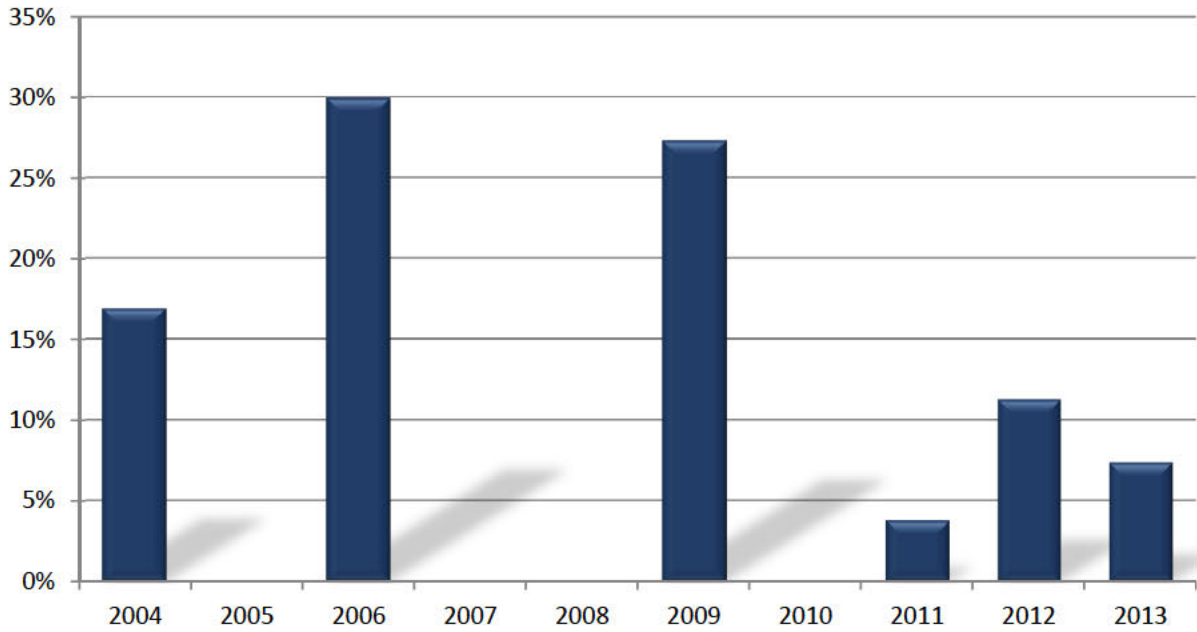


### Five Year Township Contributions Per Capita Primary and Local Roads

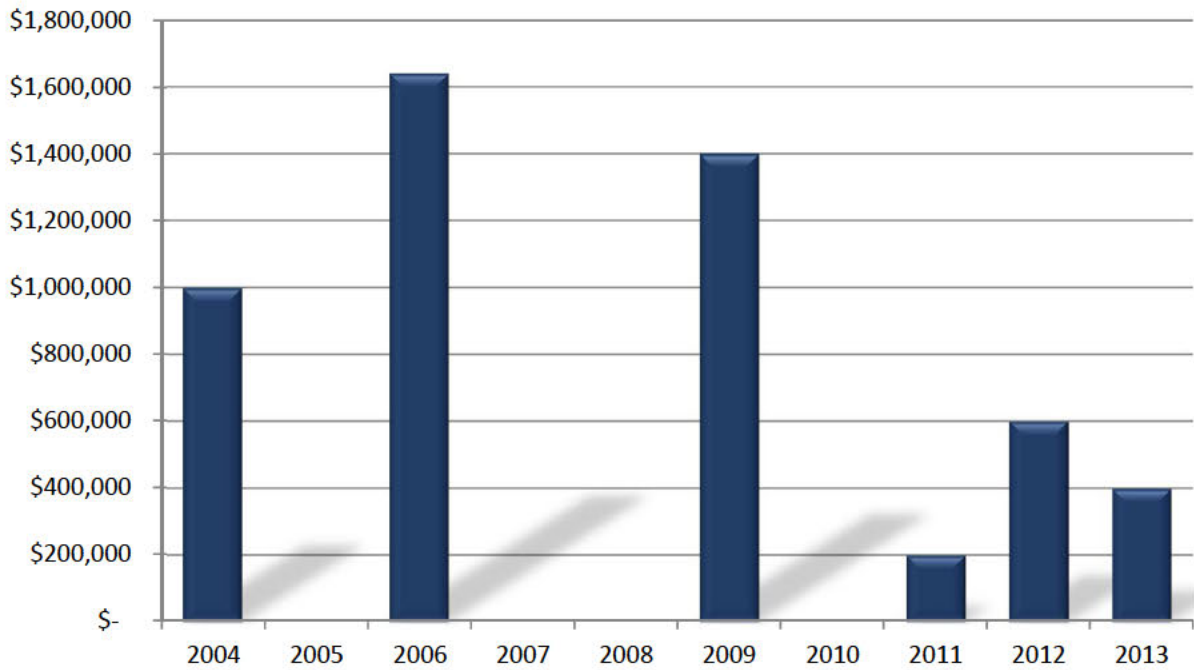




**TRANSFERS FROM PRIMARY ROAD FUND TO LOCAL ROAD FUND  
AS A PERCENT OF TOTAL PRIMARY MTF DISTRIBUTIONS  
2004-2013**

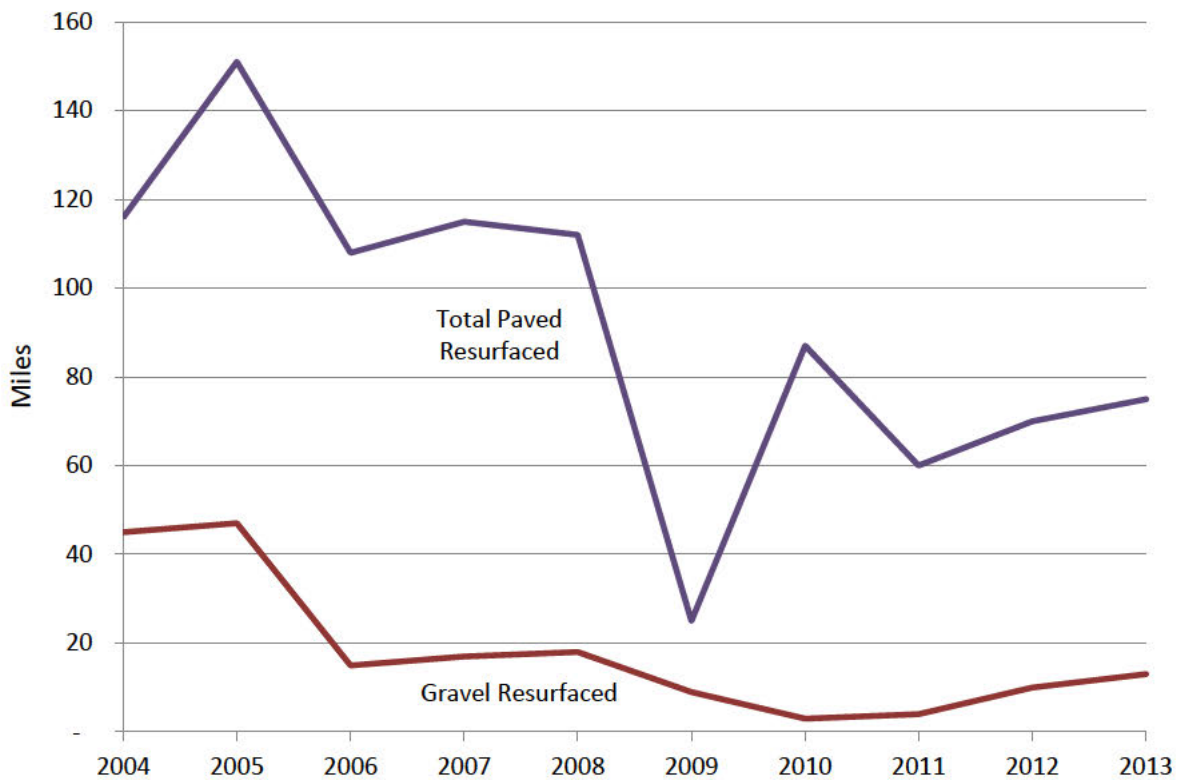


**DOLLAR TRANSFERS FROM PRIMARY ROAD FUND TO LOCAL  
ROAD FUND  
2004-2013**



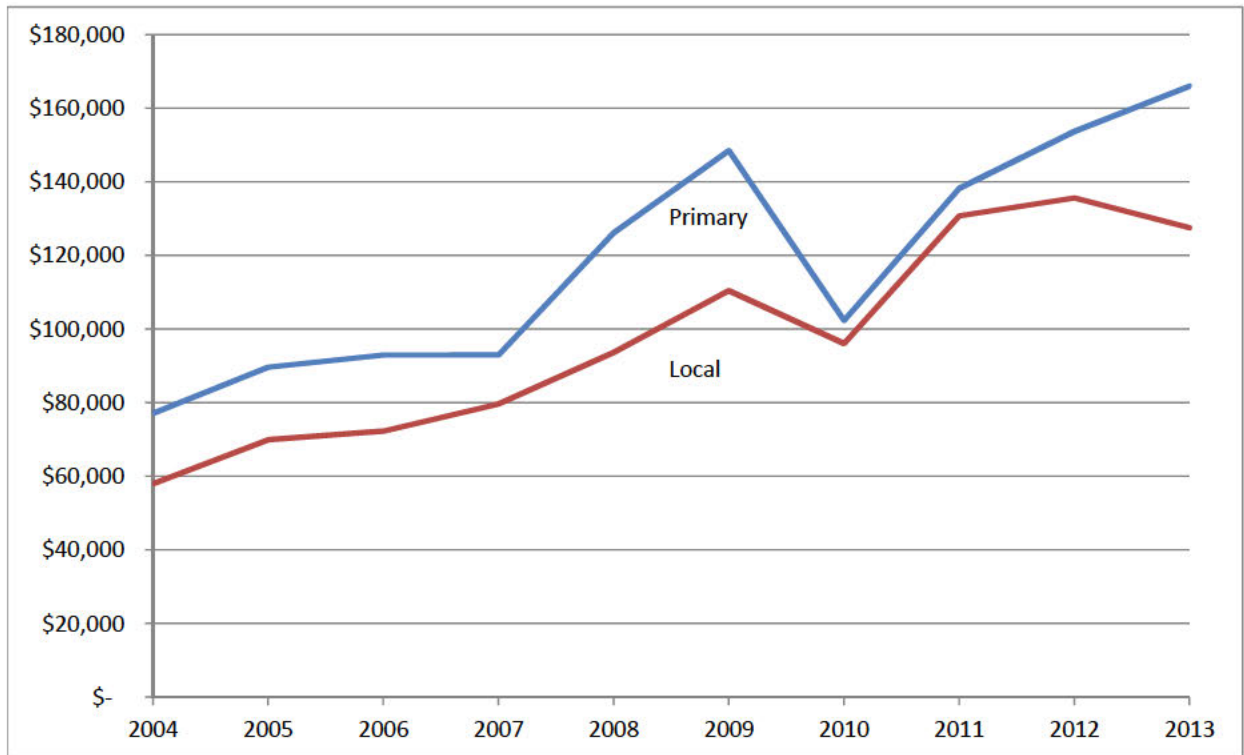
# TEN YEAR HISTORY ROAD RESURFACING

<u>YEAR</u>	<u>PRIMARY PAVED MILES RESURFACED</u>	<u>LOCAL PAVED MILES RESURFACED</u>	<u>TOTAL MILES RESURFACED</u>	<u>LOCAL MILES GRAVELLED</u>
2004	84	32	116	45
2005	106	45	151	47
2006	65	43	108	15
2007	86	29	115	17
2008	97	15	112	18
2009	2	23	25	9
2010	87	-	87	3
2011	56	4	60	4
2012	61	9	70	10
2013	66	9	75	13

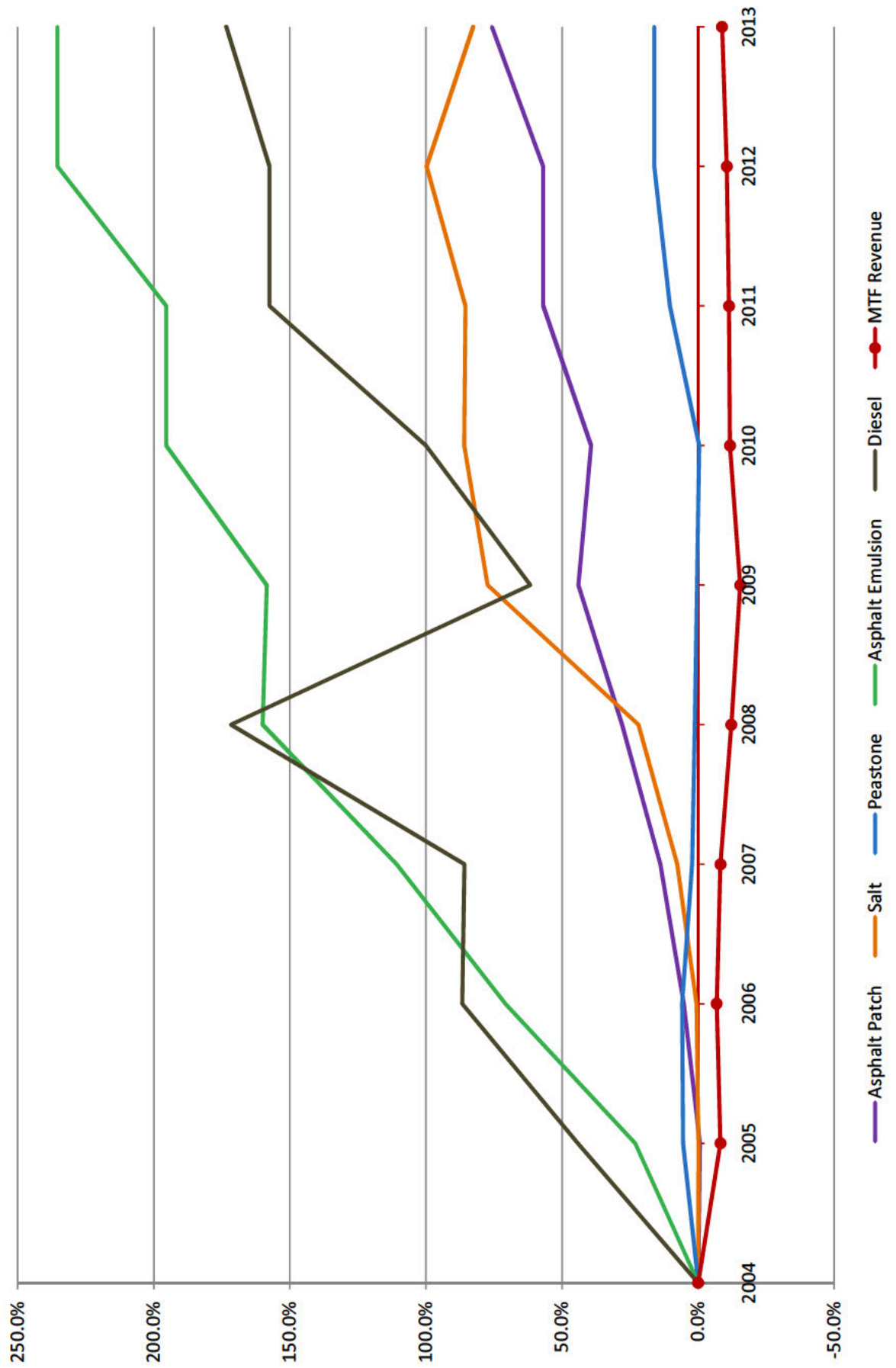


# ANNUAL POTHOLE PATCHING COSTS

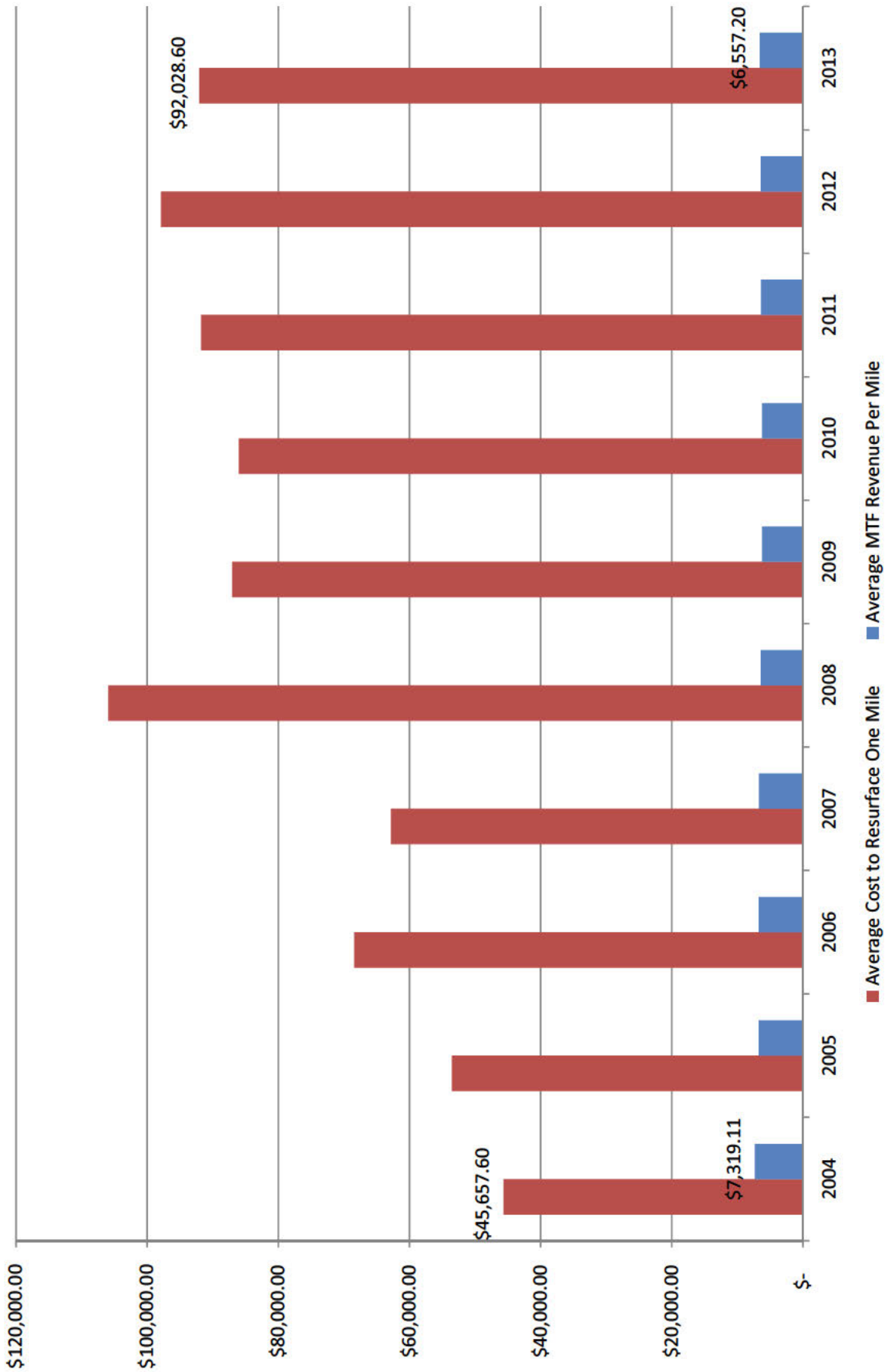
YEAR	PRIMARY TONS	LOCAL TONS	TOTAL TONS	PRIMARY COST	LOCAL COST	TOTAL COST	AVG COST/MILE OF PRIMARY	AVG COST/MILE OF LOCAL	AVG COST/TON OF COLD PATCH
2004	205	157	362	\$ 77,144	\$ 58,005	\$ 135,149	\$ 202	\$ 211	\$ 373
2005	260	213	473	89,604	69,948	159,552	235	254	337
2006	265	147	412	92,932	72,276	165,208	243	263	401
2007	380	179	559	92,925	79,671	172,596	243	290	309
2008	269	206	475	126,126	93,649	219,775	330	341	463
2009	304	226	530	148,508	110,430	258,938	389	402	489
2010	168	182	350	102,375	96,049	198,424	262	349	567
2011	217	270	487	138,209	130,727	268,936	354	465	552
2012	208	236	444	153,715	135,620	289,335	393	483	652
2013	258	215	473	165,932	127,585	293,517	424	454	621



# MATERIAL COST TRENDS BASE YEAR: 2004



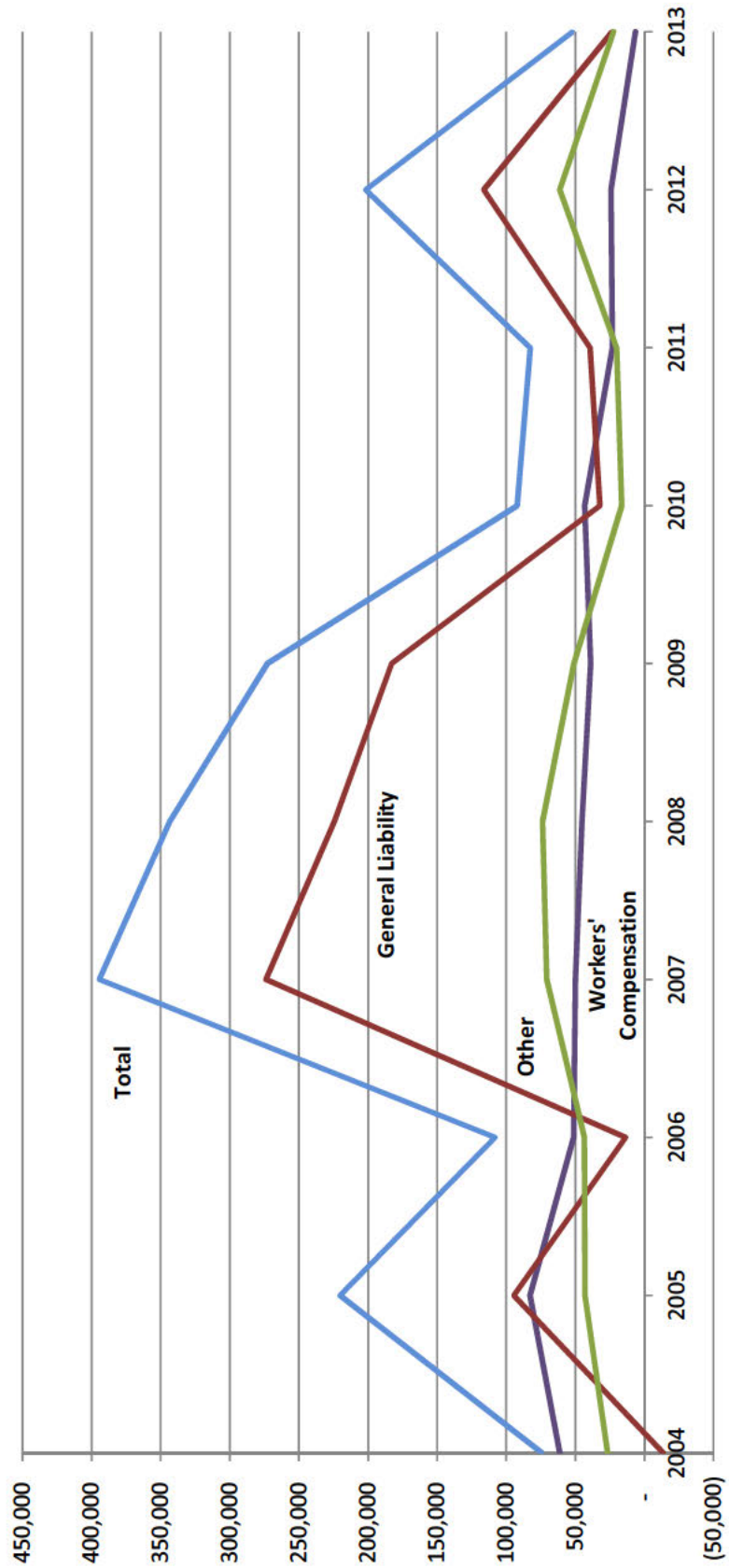
# PAVING COST TRENDS PER MILE





# ANNUAL INSURANCE COSTS

YEAR	2004	2005	2006	2007	2008	2009	2010	2011	2012	2013
Workers' Compensation	61,139	82,677	51,154	50,000	45,145	38,937	43,319	23,124	24,163	6,418
General Liability	(14,014)	94,463	13,552	273,832	224,354	182,841	32,247	39,346	116,336	23,275
Other	26,540	43,107	43,457	70,595	73,770	51,018	16,496	20,093	61,149	22,187
<b>Total</b>	<b>73,665</b>	<b>220,247</b>	<b>108,163</b>	<b>394,427</b>	<b>343,269</b>	<b>272,796</b>	<b>92,062</b>	<b>82,563</b>	<b>201,648</b>	<b>51,880</b>



# SUMMARY OF PERMIT DEPARTMENT OPERATIONS

---

<b>Permit Type</b>	<b>Number Issued</b>	<b>Amount Collected</b>
Annual Permits/Cab Cards	276	
Single Move Permits	445	
Driveway Permits	134	
Utility Permits	142	
Building Move Permits	-	
Tap In Permits	-	
Road Bore	76	
		\$ 65,540
Highway Permits/Bituminous Road Cuts	32	\$ 12,800
MISS DIG Services	3,972	\$ 1,250
(calls forwarded to other agencies)	757	
Accident/Sign Damages Recovered		\$ 1,088
Highway Permits/Miscellaneous (no charge)	43	
<b>Total Permit Fees Collected</b>		<b>\$ 80,678</b>

# 2012-2013

## CAPITAL OUTLAY

---

### EQUIPMENT AND BUILDING PURCHASES

#### **Buildings and Yard & Storage**

Brine Well Motor	<u>\$ 1,263</u>
Total Building and Yard & Storage	<u><u>\$ 1,263</u></u>

#### **Road Equipment**

2 Ford F150 Trucks	\$ 35,339
7 Weed Trimmers	960
1 Stihl Chainsaw	720
1 Gamma NT Traffic Counter	558
1 Samsung Cell Phone	50
Rebuilt Transmissions/Engines and Repairs - various vehicles	<u>31,320</u>
Total Road Equipment	<u><u>\$ 68,947</u></u>

#### **Engineering Equipment**

Canon 36" Plotter	<u>\$ 4,139</u>
Total Engineering Equipment	<u><u>\$ 4,139</u></u>

**Total 2012-2013 Capital Outlay Expense** \$ 73,086

# STATUS OF ROAD MILEAGE JANUARY 1, 2014

TOWNSHIP	PRIMARY ROADS		TOTAL MILES PRIMARY	LOCAL ROADS		PLATTED STREETS		TOTAL MILES LOCAL	TOTAL MILES IN TWP	TOTAL MILES PAVED	TOTAL PERCENT PAVED	TOTAL MILES GRAVEL
	PAVED	GRAVEL		PAVED	GRAVEL	PAVED	GRAVEL					
Bellevue	18.40	-	18.40	3.66	44.78	0.23	-	48.67	67.07	22.29	33.23%	44.78
Benton	28.13	-	28.13	7.02	26.60	-	-	33.62	61.75	35.15	56.92%	26.60
Brookfield	18.41	-	18.41	9.19	44.83	-	-	54.02	72.43	27.60	38.11%	44.83
Carmel	23.36	-	23.36	8.26	33.66	0.33	-	42.25	65.61	31.95	48.70%	33.66
Chester	13.70	-	13.70	4.52	43.97	-	0.13	48.62	62.32	18.22	29.24%	44.10
Delta	55.85	-	55.85	8.98	7.37	94.14	0.64	111.13	166.98	158.97	95.20%	8.01
Eaton	25.99	-	25.99	19.28	18.61	4.28	-	42.17	68.16	49.55	72.70%	18.61
Eaton Rapids	24.09	-	24.09	7.59	35.70	-	-	43.29	67.38	31.68	47.02%	35.70
Hamlin	26.47	-	26.47	13.06	31.66	-	0.10	44.82	71.29	39.53	55.45%	31.76
Kalamo	18.30	-	18.30	8.26	39.10	0.26	-	47.62	65.92	26.82	40.69%	39.10
Oneida	23.51	-	23.51	16.19	14.55	9.47	0.19	40.40	63.91	49.17	76.94%	14.74
Roxand	20.72	-	20.72	10.07	34.52	-	-	44.59	65.31	30.79	47.14%	34.52
Sunfield	22.80	-	22.80	12.95	23.74	0.72	-	37.41	60.21	36.47	60.57%	23.74
Vermontville	17.51	-	17.51	3.56	38.57	-	-	42.13	59.64	21.07	35.33%	38.57
Walton	23.00	-	23.00	12.29	35.42	-	-	47.71	70.71	35.29	49.91%	35.42
Windsor	31.54	-	31.54	16.35	25.80	10.60	0.30	53.05	84.59	58.49	69.15%	26.10
<b>TOTAL</b>	<b>391.78</b>	<b>-</b>	<b>391.78</b>	<b>161.23</b>	<b>498.88</b>	<b>120.03</b>	<b>1.36</b>	<b>781.50</b>	<b>1,173.28</b>	<b>673.04</b>	<b>57.36%</b>	<b>500.24</b>

# DEFICIENT BRIDGES

- STRUCTURALLY DEFICIENT BRIDGE
- FUNCTIONALLY OBSOLETE BRIDGE

